



**KEW GREEN, RICHMOND, TW9**  
£14,000 per month\*

**Carter Jonas**



# HERBARIUM HOUSE, KEW GREEN, KEW GREEN, RICHMOND TW9 3AA

An imposing Grade II listed family residence believed to date back to the mid - 18th century adjacent to Elizabeth Gate entrance to the Royal Botanic Gardens, Kew, and enjoying views over Kew Green. Available now.

## LOCATION

Kew Green has many highly regarded local nursery/primary schools, Kew Bridge and Kew Gardens stations and the local village shops, restaurants and pubs are all within easy reach.

## THE PROPERTY

Herbarium House was once the official residence of the keeper of The Royal Botanic Gardens Kew Herbarium. This magnificent property, commands a beautiful position fronting historic Kew Green and offers an extremely generous amount of family accommodation over four floors totalling approximately 4899 sq.ft, including five/six bedrooms, four reception rooms and six bathrooms. Featuring classic room proportions with wonderful original features and a charming garden at the rear which can be accessed via bi-fold door from the kitchen and a side patio accessed from one of the front reception rooms.

This property is on four floors, with ground floor boasting three reception rooms, large eat in kitchen that leads to the garden, WC/Cloakroom. The first floor has four bedrooms (two en-suite) plus large family bathroom. The top floor boasts two further rooms which can be used as bedrooms or study/office with a large family bathroom.

On the lower level which has a separate entrance you have a large utility room, wine storage and cinema room and another bathroom.

Available unfurnished.

Minimum Term 12 months

Council Tax Band H

NHA

Holding deposit = 1 week rent of £3,230.76  
Security Deposit = 6 weeks rent £19,384.56



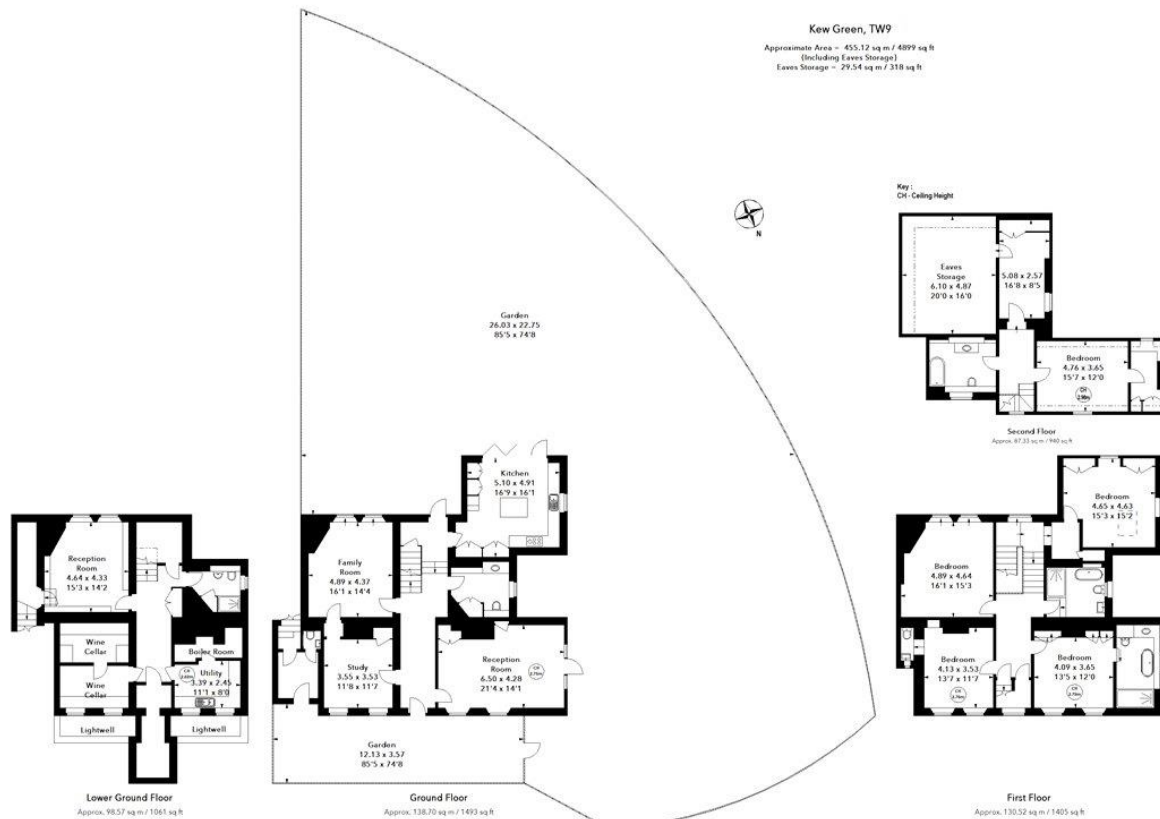


**ADDITIONAL INFORMATION**

Offers	Available for a minimum term of 12 months longer terms will be considered
Viewing	Strictly by appointment
Local Authority	Richmond Borough Council - Council Tax Band H
EPC	Exempt







The floor plan is not to scale and measurements and areas shown are approximate and therefore should be used for illustrative purposes only. The plan has been prepared in accordance with the RICS code of Measuring Practice and whilst we have confidence in the information produced, it must not be relied on. If there is any aspect of particular importance, you should carry out or commission your own inspection of the property.



T: 020 8878 1115

70 White Hart Lane, Barnes, SW13 0PZ

E: barnes@carterjonas.co.uk

A member of



Exclusive UK affiliate of

**CHRISTIE'S**  
INTERNATIONAL REAL ESTATE

Classification L2 - Business Data

## IMPORTANT INFORMATION

These particulars are for general information purposes only and do not represent an offer or contract or part of one. Carter Jonas or anyone in their employment has made every attempt to ensure that the particulars and other information provided are as accurate as possible and they are not intended to amount to advice on which you should rely as being factually accurate. Full information which may be relevant to your decision regarding the property can be found on the property listing on [carterjonas.co.uk](http://carterjonas.co.uk) or a separately available material information sheet, and we would advise you to confirm the details of any material information prior to any offer being submitted. You should not assume that the property has all necessary planning, building regulations or other consents and Carter Jonas has not tested any services, facilities, or equipment. Any measurements and distances given are approximate only. Where Carter Jonas has been provided with a floorplan by a third party, we cannot guarantee that the floorplan has been measured in accordance with IPMS. Purchasers or prospective tenants must satisfy themselves of all of the aforementioned by independent inspection or otherwise. Our images only represent part of the property as it appeared at the time they were taken and do not represent the furnishings included; these are confirmed in a separate inventory. If you require further information, please contact us. \*Administration fees may apply depending on tenancy type. Please contact your local branch for this information.