



**RIO**

Lower Street, Cavendish, Suffolk, CO10 8AQ

**Carter Jonas**



## **RIO, LOWER STREET, CAVENDISH, SUFFOLK CO10 8AQ**

- 6 miles to Clare
- 3 miles to Long Melford
- 6 miles to Sudbury
- 15 miles to Bury St Edmunds

Edwardian semi-detached family home • Three reception rooms • Fitted kitchen/breakfast room. • Covered loggia. • Three first floor bedrooms • Generous gardens • Off road parking • Rear access providing access to river walks.

### **DESCRIPTION**

Dating back to the first quarter of the 20th Century and of traditional brick construction with part rendered elevations under a pitched and tiled roofline, Rio is a handsome semi-detached family home retaining and displaying a host of original characteristics including generous ceiling heights, open fireplaces, panelled internal doors, picture rails and tiled flooring. A particular feature of the property are the large mature gardens to the rear, and ideal for dog lovers, pedestrian access is afforded over the garden next door to the lovely walks along the banks of the river Stour which runs through the village. Rio benefits from off road parking and an inspection is unreservedly recommended to appreciate the qualities of the home on offer.

Rio stands pleasantly back from the road close to the heart of the village. Centred around a picturesque village green, Cavendish has a thriving community with a range of local amenities including primary school, community shop, historic village inn and the magnificent Church of St Mary the Virgin.

**A SUBSTANTIAL SEMI-DETACHED EDWARDIAN VILLA PROVIDING  
GENEROUS FAMILY ACCOMMODATION WITH LARGE MATURE GARDENS  
SITUATED IN THE HEART OF THE VILLAGE.**





## LOCATION

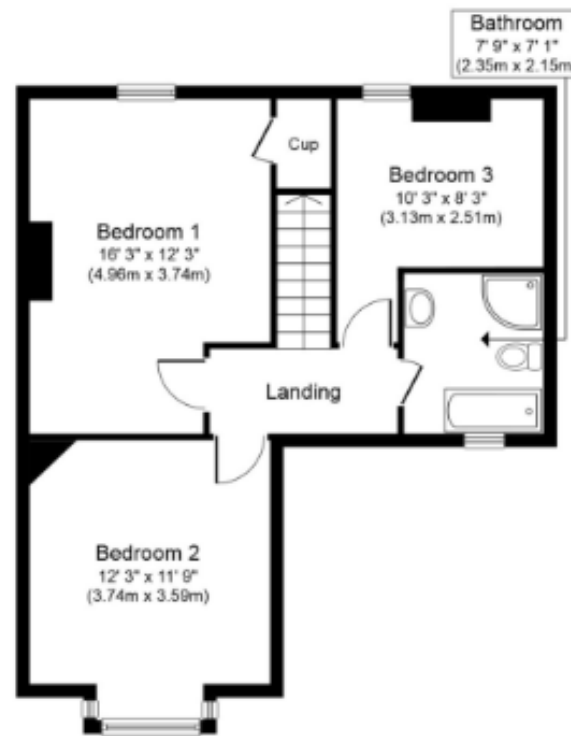
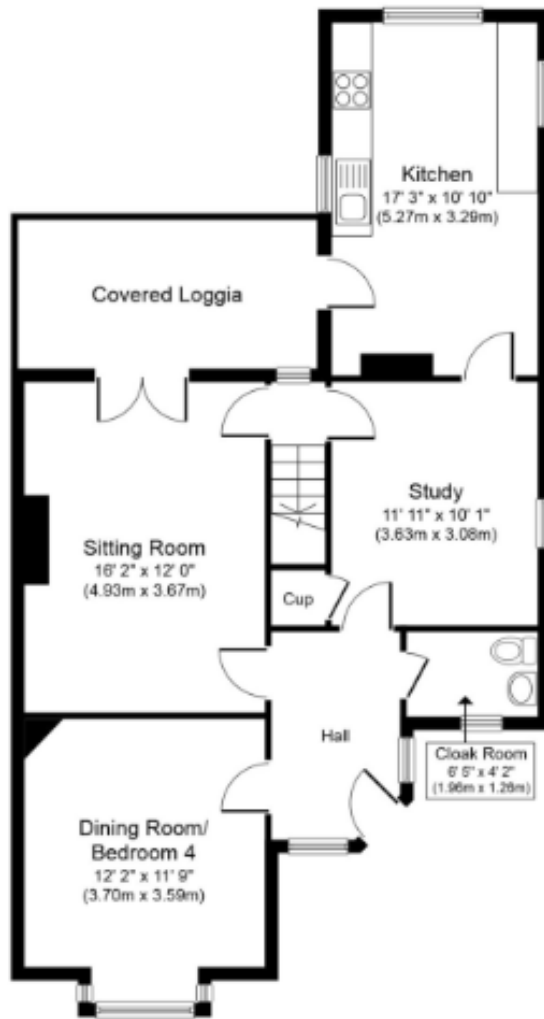
Cavendish sits on the river Stour midway between Long Melford and Clare, both of which provide an excellent range of everyday amenities. For more comprehensive schooling, shopping, recreational and cultural facilities, the Cathedral town of Bury St Edmunds is fifteen miles north, and the market town of Sudbury, with its rail link to London via Marks Tey, lies six miles south.

## ADDITIONAL INFORMATION

**Tenure:** Freehold  
**Services:** Mains water, electricity, gas and drainage  
**Local Authority:** West Suffolk  
**Council Tax:** Band D  
**Viewings:** By appointment with Carter Jonas  
T: 01787 882881  
**What3Words:** ///shorten.pump.sneezing







**Long Melford 01787 882881**

suffolk@carterjonas.co.uk

Little St Mary's, Lond Melford, Suffolk, CO10 9LQ

**carterjonas.co.uk**

Offices throughout the UK

*Exclusive UK affiliate of*

**CHRISTIE'S**  
INTERNATIONAL REAL ESTATE

#### IMPORTANT INFORMATION

These particulars are for general information purposes only and do not represent an offer of contract or part of one. Carter Jonas has made every attempt to ensure that the particulars and other information provided are as accurate as possible and are not intended to amount to advice on which you should rely as being factually accurate. You should not assume that the property has all necessary planning, building regulations or other consents and Carter Jonas have not tested any services, facilities or equipment. Any measurements and distances given are approximate only. Purchasers must satisfy themselves of all of the aforementioned by independent inspection or otherwise. Although we make reasonable efforts to update our information, neither Carter Jonas LLP nor anyone in its employment or acting on its behalf makes any representations warranties or guarantees, whether express or implied, in relation to the property, or that the content in these particulars is accurate, complete or up to date. Our images only represent part of the property as it appeared at the time they were taken. If you require further information please contact us.