



LUKE HOUSE, 3 ABBEY ORCHARD STREET, SW1P
£1,095 per week*

Carter Jonas

LUKE HOUSE, 3 ABBEY ORCHARD STREET, SW1P

A two-bedroom apartment of approximately 957 square feet.

Situated on the fifth floor of this purpose-built block with a lift centrally located in Westminster and within walking distance of the River Thames, Houses of Parliament and Westminster Abbey. The building has a dedicated building manager, secure underground parking, wifi and a laundry room.

Westminster lies on the north bank of the River Thames. It has its' own University and shopping street alongside a substantial residential element which is home to many Members of Parliament, political journalists and students. Its' core encompasses the famous Historic landmarks of the Houses of Parliament and Westminster Abbey and has been the seat of the Government of England for almost a thousand years. A more recent landmark and tourist attraction is the London Eye from where fantastic views of the City can be seen.

Nearest Tube: St James's Park / Victoria

AST

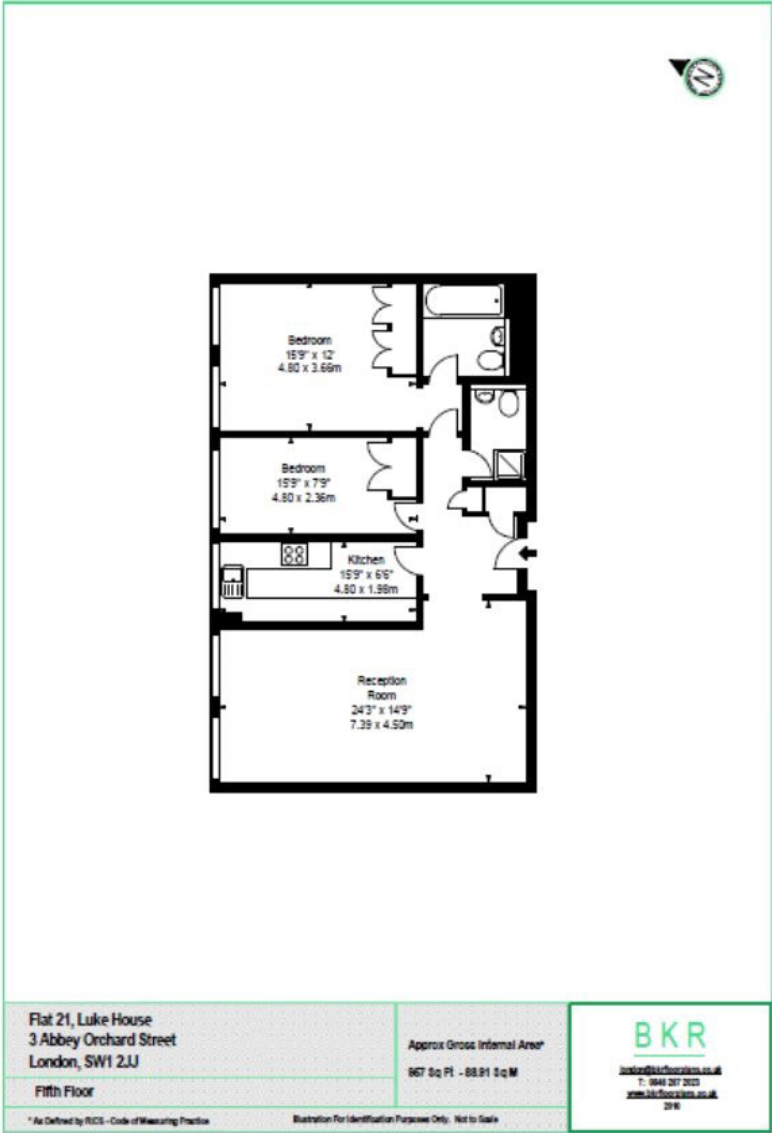
The deposit will be £5,475 at a rental value of £1,095 (asking price).

Holding deposit = 1 weeks rent of £1,092

Deposit is 5 weeks rent (£1,095 pw = £5,475 deposit)

- Long Let
- Furnished
- 2 Bedrooms
- 1 Reception
- 1 Kitchen
- 2 Bathrooms
- EPC = D
- Council Tax Band = G
- Communal heating and hot water
- Mains electric

Energy Efficiency Rating		
	Current	Potential
Very energy efficient - lower running costs		
(92+) A		
(81-91) B		
(69-80) C		
(55-68) D	61	72
(39-54) E		
(21-38) F		
(1-20) G		
Not energy efficient - higher running costs		
England, Scotland & Wales	EU Directive 2002/91/EC	



Mayfair Lettings 020 7493 0676
mayfair@carterjonas.co.uk
18 Davies Street, Mayfair, London, W1K 3DS



Exclusive UK affiliate of
CHRISTIE'S
INTERNATIONAL REAL ESTATE
Classification L2 - Business Data

IMPORTANT INFORMATION

These particulars are for general information purposes only and do not represent an offer or contract or part of one. Carter Jonas or anyone in their employment has made every attempt to ensure that the particulars and other information provided are as accurate as possible and they are not intended to amount to advice on which you should rely as being factually accurate. Full information which may be relevant to your decision regarding the property can be found on the property listing on carterjonas.co.uk or a separately available material information sheet, and we would advise you to confirm the details of any material information prior to any offer being submitted. You should not assume that the property has all necessary planning, building regulations or other consents and Carter Jonas has not tested any services, facilities, or equipment. Any measurements and distances given are approximate only. Where Carter Jonas has been provided with a floorplan by a third party, we cannot guarantee that the floorplan has been measured in accordance with IPMS. Purchasers or prospective tenants must satisfy themselves of all of the aforementioned by independent inspection or otherwise. Our images only represent part of the property as it appeared at the time they were taken and do not represent the furnishings included; these are confirmed in a separate inventory. If you require further information, please contact us. *Administration fees may apply depending on tenancy type. Please contact your local branch for this information.