



ARGYLL STREET, LONDON, W1F
£525 per week*

Carter Jonas

FLAT 7, ARGYLL STREET, LONDON, W1F 7TJ

- One bedroom
- Reception room
- Kitchen
- Furnished
- Fourth floor (lift)

THE PROPERTY

This bright one-bedroom apartment is located on the fourth floor of a purpose-built apartment and is moments from bustling Oxford Circus.

The property comprises of one double bedroom with en suite, spacious reception room, kitchen and separate cloakroom. The building benefits from a lift.

Argyll Street is a street in the Soho district of Central London. It links Great Marlborough Street to the south to Oxford Street in the north and is connected to Regent Street to the west by Little Argyll Street.

Holding deposit is 1 week's rent = £525 (at asking price)

Security deposit is 5 weeks rent = £2,625 (at asking price £525pw)

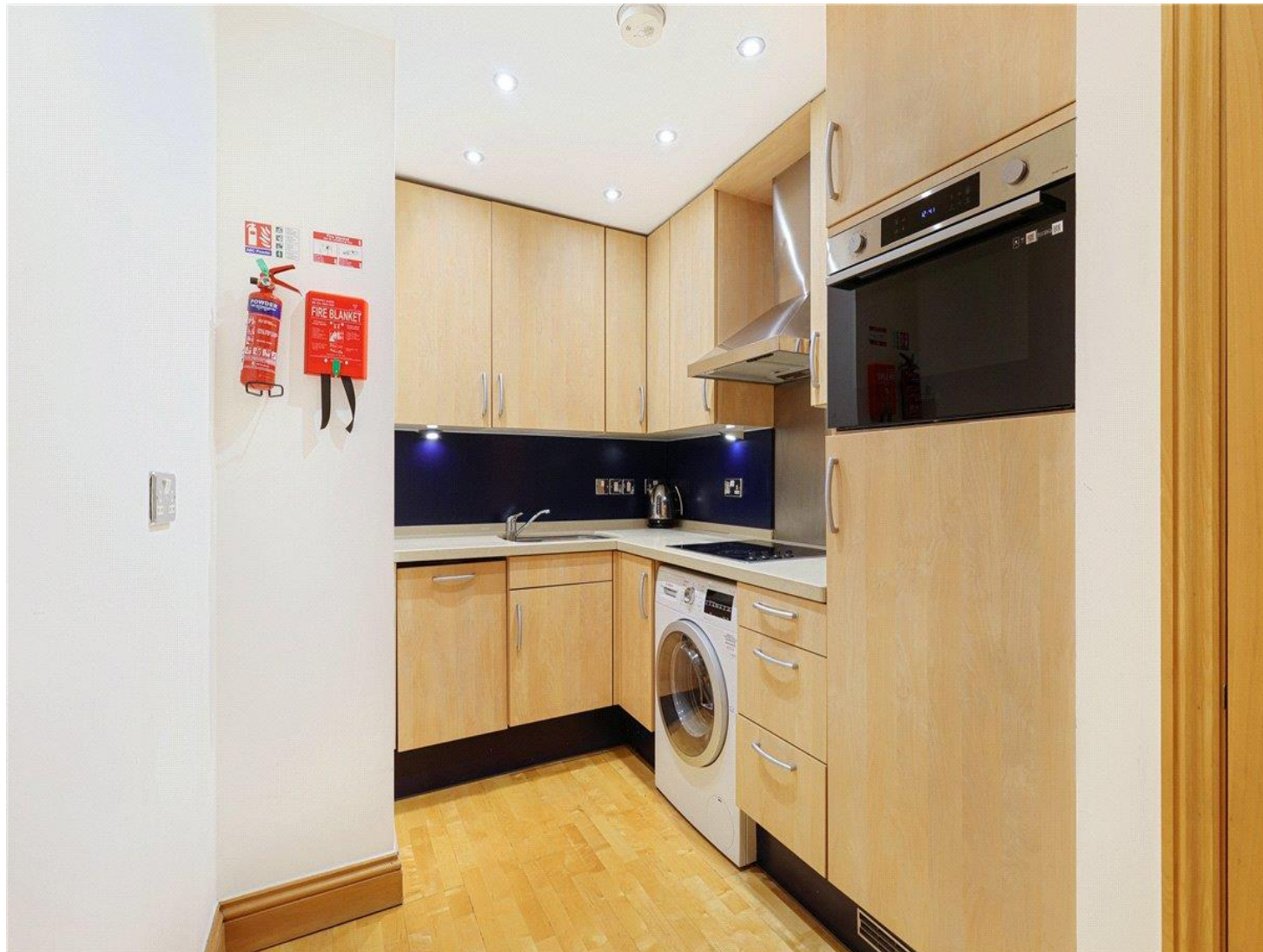
Minimum term 12 months

Council Tax Band F

For eligibility for resident parking permits, please refer to the <https://www.westminster.gov.uk/parking> website for further details.

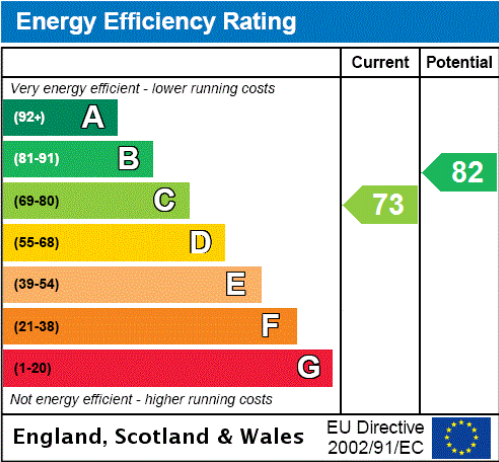
For the latest information on broadband and mobile coverage, please visit <https://checker.ofcom.org.uk/en-gb/broadband-coverage> for the most up-to-date details.

One bedroom apartment located on the 4th floor (with lift) and centrally located just off Oxford Street.



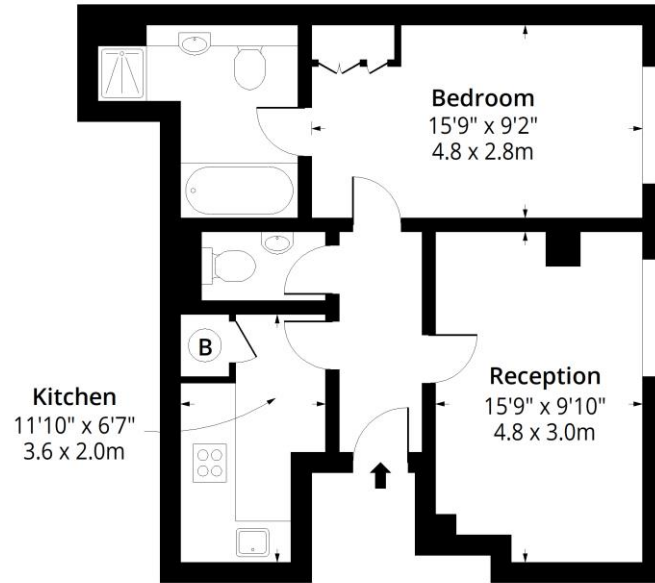
ADDITIONAL INFORMATION

Offers	Available for a minimum term of 12 months longer terms will be considered
Viewing	Strictly by appointment
Local Authority	Westminster City Council - Council Tax Band F



Argyll Street, W1F

Approx. Gross Internal Area 536 Sq Ft - 49.79 Sq M



Fourth Floor

Floor Area 536 Sq Ft - 49.79 Sq M



Measured according to RICS IPMS2. Floor plan is for illustrative purposes only and is not to scale. Every attempt has been made to ensure the accuracy of the floor plan shown, however all measurements, fixtures, fittings and data shown are an approximate interpretation for illustrative purposes only. 1 sq m = 10.76 sq feet.

lpaplus.com

Date: 3/4/2024

T: 020 7486 8866

37 New Cavendish Street, London, W1G 9TL

E: marylebone@carterjonas.co.uk

A member of



Exclusive UK affiliate of

CHRISTIE'S
INTERNATIONAL REAL ESTATE

Classification L2 - Business Data



IMPORTANT INFORMATION

These particulars are for general information purposes only and do not represent an offer or contract or part of one. Carter Jonas or anyone in their employment has made every attempt to ensure that the particulars and other information provided are as accurate as possible and they are not intended to amount to advice on which you should rely as being factually accurate. Full information which may be relevant to your decision regarding the property can be found on the property listing on carterjonas.co.uk or a separately available material information sheet, and we would advise you to confirm the details of any material information prior to any offer being submitted. You should not assume that the property has all necessary planning, building regulations or other consents and Carter Jonas has not tested any services, facilities, or equipment. Any measurements and distances given are approximate only. Where Carter Jonas has been provided with a floorplan by a third party, we cannot guarantee that the floorplan has been measured in accordance with IPMS. Purchasers or prospective tenants must satisfy themselves of all of the aforementioned by independent inspection or otherwise. Our images only represent part of the property as it appeared at the time they were taken and do not represent the furnishings included; these are confirmed in a separate inventory. If you require further information, please contact us. *Administration fees may apply depending on tenancy type. Please contact your local branch for this information.