



BRYANSTON SQUARE, MARYLEBONE, W1H
£4,250 per week*

Carter Jonas

BRYANSTON SQUARE, MARYLEBONE, LONDON, W1H 7LL

A brand new, fully refurbished house on the sought-after Bryanston Square., with access to the private gardens.

- 4 or 5 Bedrooms
- 4 Bathrooms
- Modern Kitchen
- Utility Room
- Guest WC
- Patio, Courtyard & Balcony
- Brand New Refurb

THE PROPERTY

This stunning house on Bryanston Square is set over five floors and has been newly refurbished to a very high standard.

On the ground floor there is a spacious reception/dining room, modern fully fitted kitchen, guest WC and a private patio.

The first floor consists of second large reception room, with a balcony and a terrace.

Across second and third floors there are a further three bedrooms, three bathrooms & a guest WC.

The fifth large bedroom is situated in the basement, along with a bathroom, utility area and private courtyard.

The property provides access to the residents only Bryanston Square and Portman Square.

The property is professionally managed by The Portman Estate.

Available for long term rental on an unfurnished basis, or furnished (at separate cost).

Holding deposit is 1 week's rent = £4,250 (at asking price)

Security deposit is 8 week's rent = £34,000 (at asking price £4,250pw)

Minimum term 12 months



LOCATION

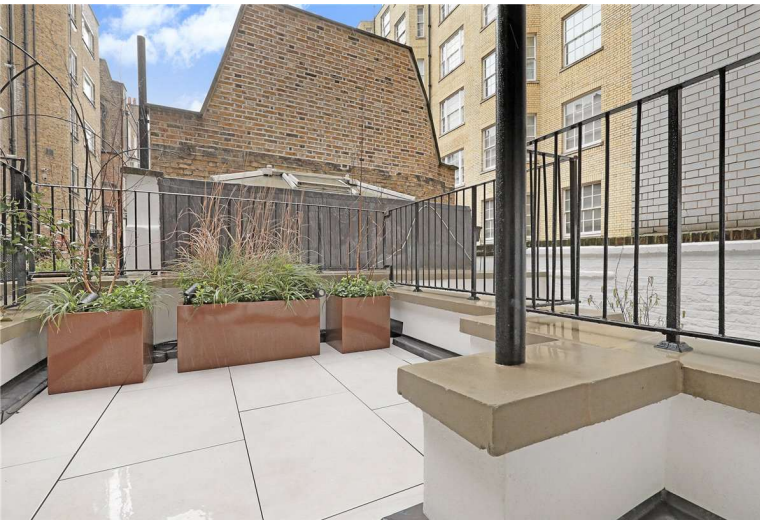
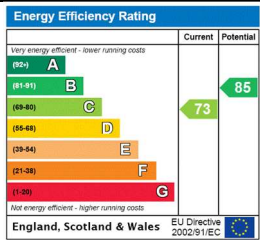
or eligibility for resident parking permits, please refer to the <https://www.westminster.gov.uk/parking> website for further details.

For the latest information on broadband and mobile coverage, please visit <https://checker.ofcom.org.uk/en-gb/broadband-coverage> for the most up-to-date details.

Bryanston Square is a short walk from Marylebone High Street, as well as Marble Arch and Baker Street Stations, and is an ideal location for all the West End's world-class amenities. Hyde Park's beautiful open spaces are also a short walk away (approximately 0.4 miles).

ADDITIONAL INFORMATION

Offers	Available for a minimum term of 12 months longer terms will be considered
Viewing	Strictly by appointment
Local Authority	Westminster City Council - Council Tax Band H



Bryanston Square, W1H

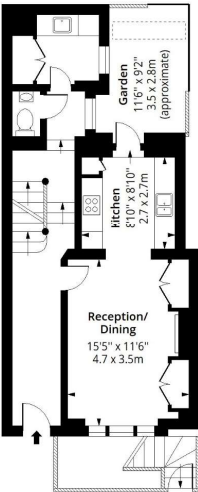
Approx. Gross Internal Area 2690 Sq Ft - 249.90 Sq M

Approx. Gross Balcony/ Terrace Area 139 Sq Ft - 12.91 Sq M



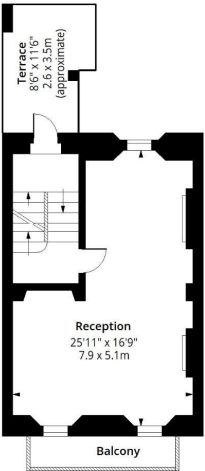
Basement

Floor Area 906 Sq Ft - 84.17 Sq M



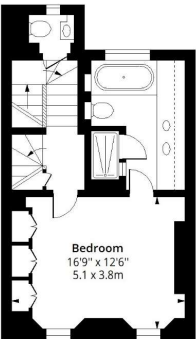
Ground Floor

Floor Area 511 Sq Ft - 47.47 Sq M



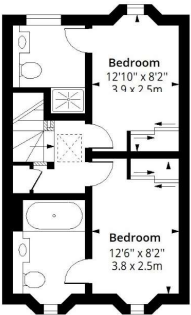
First Floor

Floor Area 433 Sq Ft - 40.23 Sq M



Second Floor

Floor Area 428 Sq Ft - 39.76 Sq M



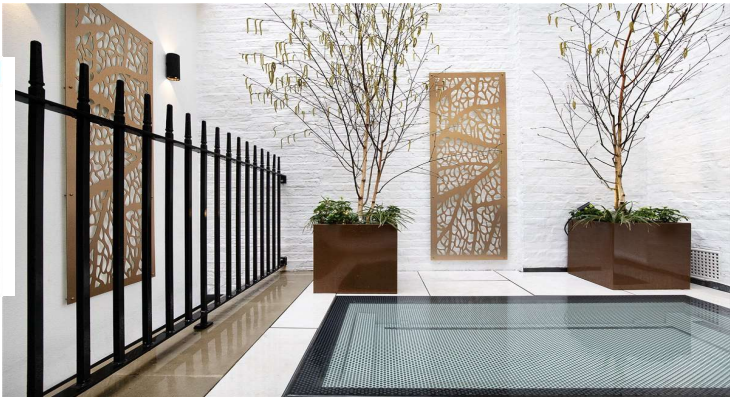
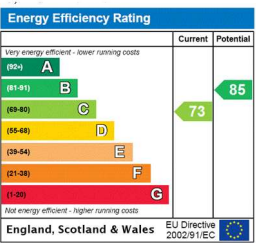
Third Floor

Floor Area 412 Sq Ft - 38.27 Sq M



Measured according to RICS IPMS2. Floor plan is for illustrative purposes only and is not to scale. Every attempt has been made to ensure the accuracy however all measurements, fixtures, fittings and data shown are an approximate interpretation for illustrative purposes only. 1 sq m = 10.76 sq feet.

lpaplus.com



T: 020 7486 8866

37 New Cavendish Street, London, W1G 9TL

E: marylebone@carterjonas.co.uk

A member of



Exclusive UK affiliate of

CHRISTIE'S
INTERNATIONAL REAL ESTATE

Classification L2 - Business Data

IMPORTANT INFORMATION

These particulars are for general information purposes only and do not represent an offer or contract or part of one. Carter Jonas or anyone in their employment has made every attempt to ensure that the particulars and other information provided are as accurate as possible and they are not intended to amount to advice on which you should rely as being factually accurate. Full information which may be relevant to your decision regarding the property can be found on the property listing on carterjonas.co.uk or a separately available material information sheet, and we would advise you to confirm the details of any material information prior to any offer being submitted. You should not assume that the property has all necessary planning, building regulations or other consents and Carter Jonas has not tested any services, facilities, or equipment. Any measurements and distances given are approximate only. Where Carter Jonas has been provided with a floorplan by a third party, we cannot guarantee that the floorplan has been measured in accordance with IPMS. Purchasers or prospective tenants must satisfy themselves of all of the aforementioned by independent inspection or otherwise. Our images only represent part of the property as it appeared at the time they were taken and do not represent the furnishings included; these are confirmed in a separate inventory. If you require further information, please contact us. *Administration fees may apply depending on tenancy type. Please contact your local branch for this information.