



SAILMAKERS COURT, WILLIAM MORRIS WAY, SW6
£1,750,000

Carter Jonas

SAILMAKERS COURT, WILLIAM MORRIS WAY, SW6

Situated on the 7th floor (with lift) the apartment has a large reception/dining room with fantastic views over the river and access to a wide balcony. There is also a modern eat-in kitchen. The principal bedroom has fitted wardrobes and an immaculate ensuite. There are three further double bedrooms served by two bathrooms.

The flat also comes with two underground parking spaces and 24-hour portorage. Sailmakers Court is part of a highly desirable gated riverside development close to the Harbour Club. (and includes 2 debentures (annual payment required)

The apartment is well located for Imperial Wharf mainline, which provides quick links to Clapham Junction, West Brompton (District Line) and Shepherds Bush (Central Line). There is also access to the riverboat which gives direct access to the city. There is a large Sainsbury's very close by and a wide range of bars and restaurants on the Wandsworth Bridge Road, Parsons Green and King's Road.

AMENITIES

- 4 Bedrooms
- 1 Reception Room
- 3 Bathrooms
- Upper floor (With Lift)
- Balcony
- Parking Garage
- 1717 Sq Feet

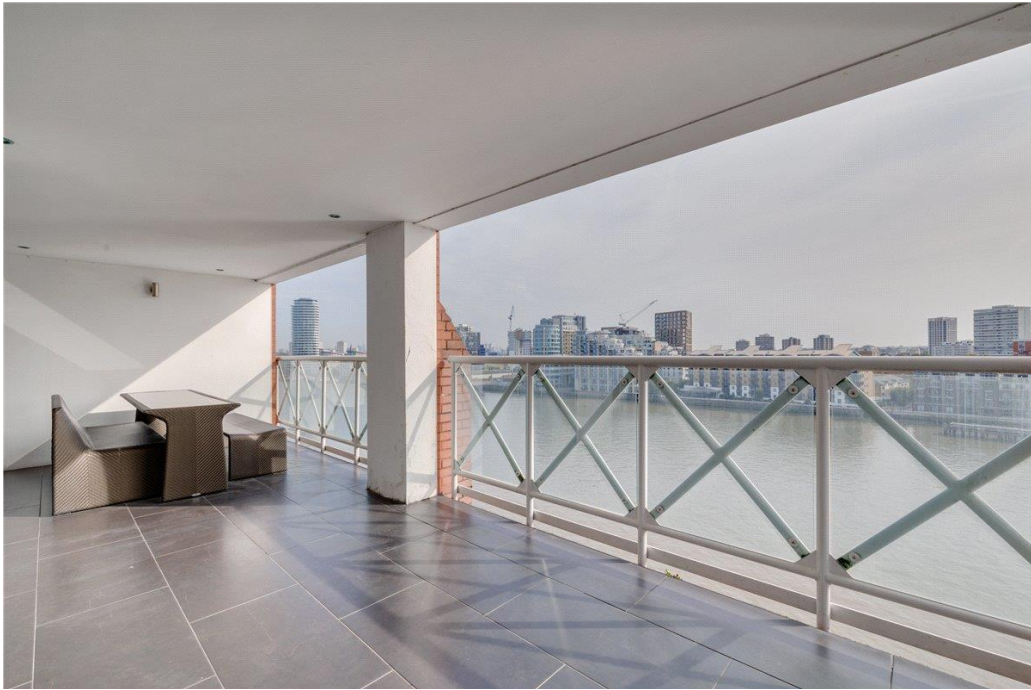
TENURE Leasehold 984 years

LOCAL AUTHORITY Hammersmith and Fulham

EPC BAND C

A STUNNING FOUR BEDROOM 7TH FLOOR (WITH LIFT) APARTMENT WITH WIDE BALCONY AND PORTER OF CIRCA 1717SQ FT WITH AN ABUNDANCE OF NATURAL LIGHT AND DIRECT VIEWS OVER THE RIVER THAMES.

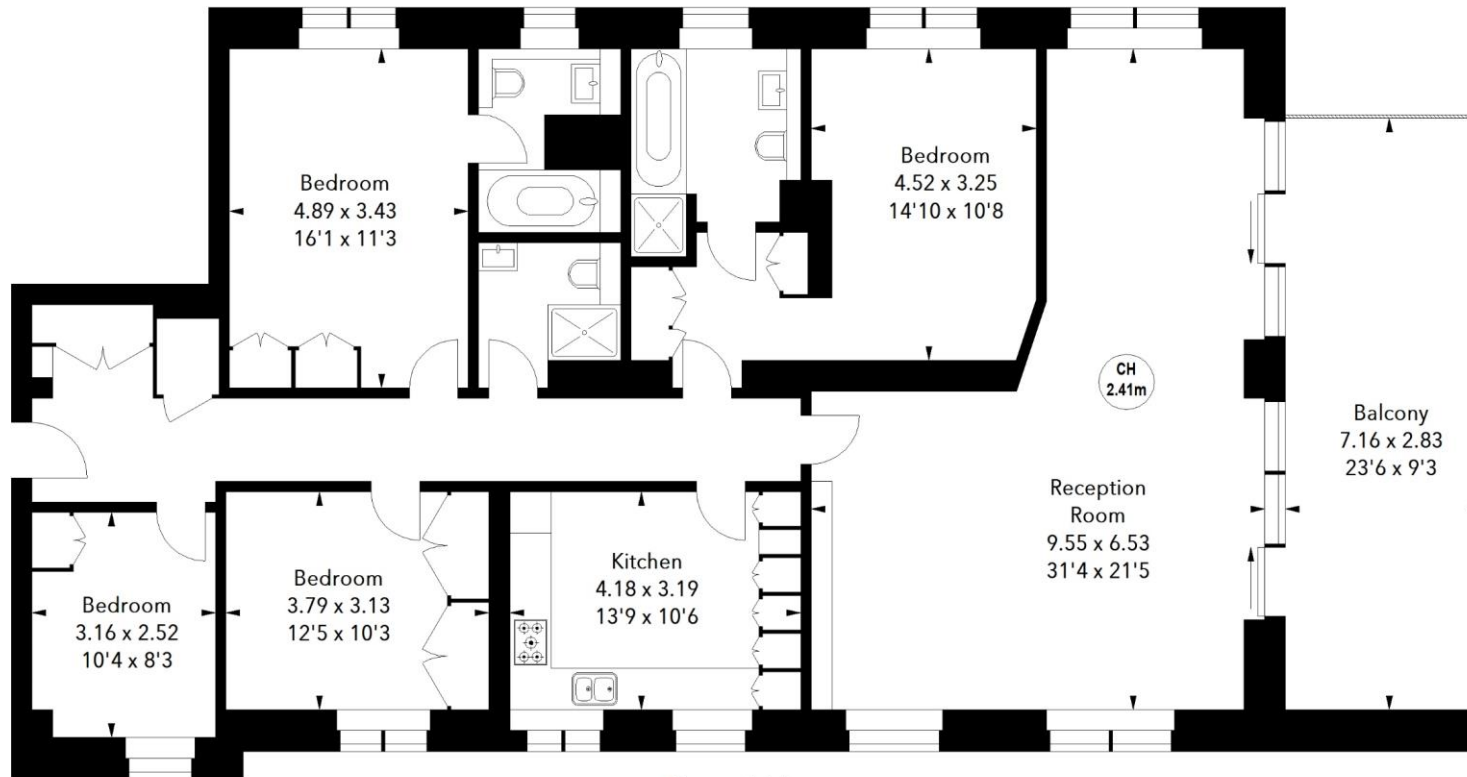




Sailmakers Court, SW6

Approximate Area = 159.51 sq m / 1717 sq ft

Key :
CH - Ceiling Height



Seventh Floor

The floor plan is not to scale and measurements and areas shown are approximate and therefore should be used for illustrative purposes only. The plan has been prepared in accordance with the RICS code of Measuring Practice and whilst we have confidence in the information produced, it must not be relied on. If there is any aspect of particular importance, you should carry out or commission your own inspection of the property.

Fulham 020 7731 3333

bishopspark@carterjonas.co.uk
361 Fulham Palace Road, London, SW6 6TA

carterjonas.co.uk
Offices throughout the UK

IMPORTANT INFORMATION

These particulars are for general information purposes only and do not represent an offer of contract or part of one. Carter Jonas has made every attempt to ensure that the particulars and other information provided are as accurate as possible and are not intended to amount to advice on which you should rely as being factually accurate. You should not assume that the property has all necessary planning, building regulations or other consents and Carter Jonas have not tested any services, facilities or equipment. Any measurements and distances given are approximate only. Purchasers must satisfy themselves of all of the aforementioned by independent inspection or otherwise. Although we make reasonable efforts to update our information, neither Carter Jonas LLP nor anyone in its employment or acting on its behalf makes any representations warranties or guarantees, whether express or implied, in relation to the property, or that the content in these particulars is accurate, complete or up to date. Our images only represent part of the property as it appeared at the time they were taken. If you require further information please contact us.

Classification L2 - Business Data