



DAMAC TOWER, NINE ELMS, SW8

Carter Jonas

DAMAC TOWER, NINE ELMS, SW8

A two-bedroom apartment on the 25th floor of DAMAC Tower, offering approx. 860 sq ft of luxury living space with two winter gardens and superb views of the London skyline.

In an exclusive partnership with Versace, DAMAC Tower Nine Elms brings you the ultimate branded experience in the heart of London. In the first collaboration between the luxury brand and a new residential property, DAMAC Tower Nine Elms rises 50 storeys and stands out as a new icon on the City Skyline.

Nestled between Vauxhall and Battersea, this area has seen significant recent development including multi-million-pound investments such as the new US Embassy and Battersea Power Station, transforming this area into an ultra-modern residential and internationally significant business district.

One and three bedroom apartments are also available, as well as a spectacular five-bedroom penthouse.

Tenure: Leasehold, expires Jan 3021 (998 years)Ground rent:

£11.96/sq ft

NB: Please note photographs are from a show apartment with a similar layout and may not be accurate to the apartment being marketed.

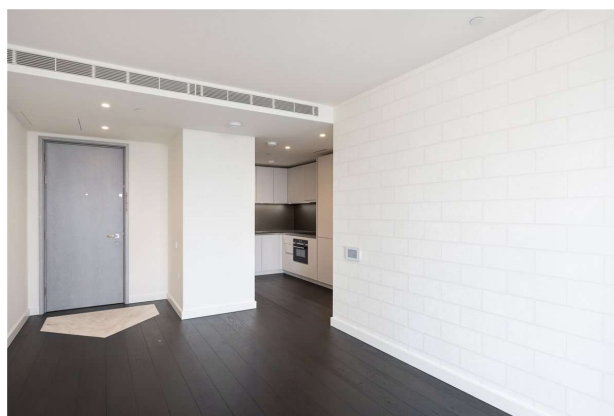
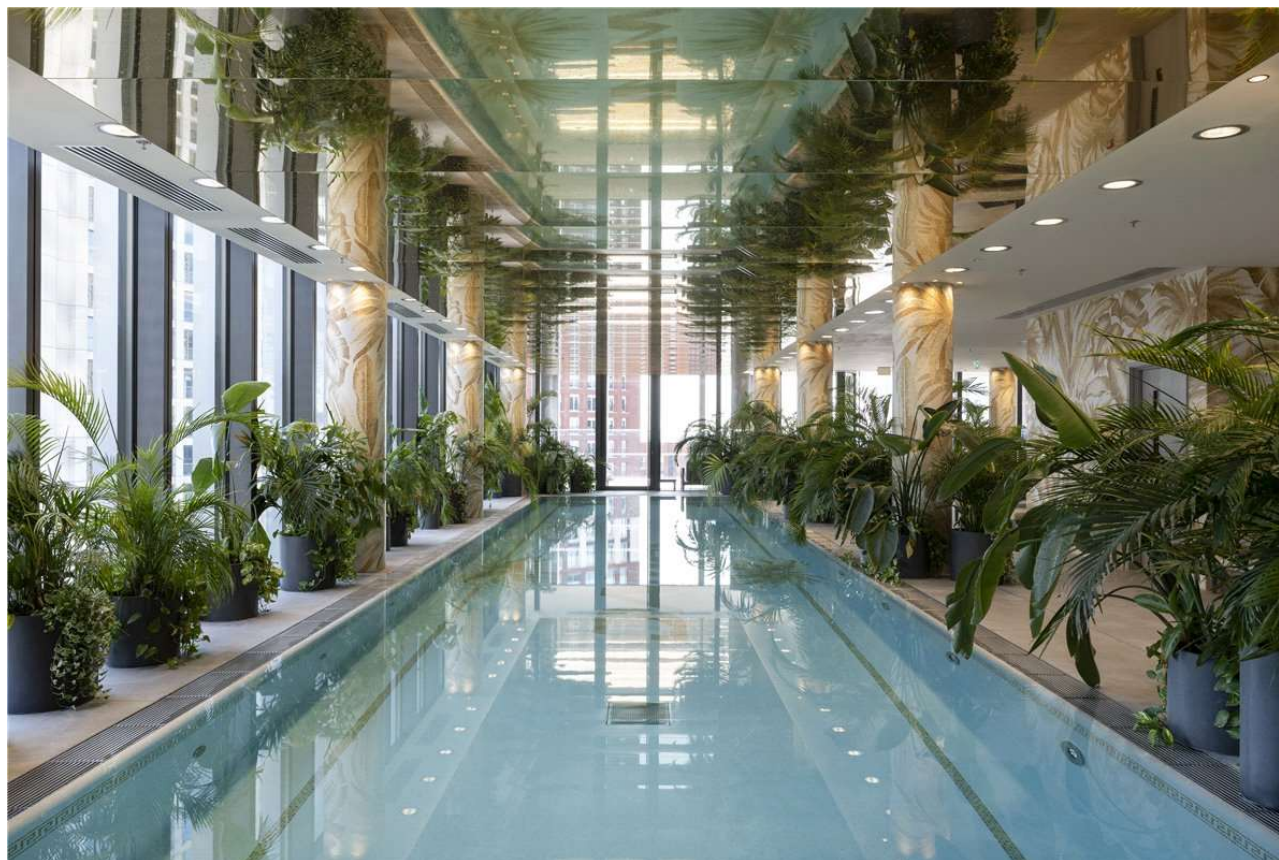
AMENITIES

- Panoramic London Views
- Versace Interior Design
- 24 Hour Concierge
- Games Room & Terrace
- State-of-the-Art Gym
- Swimming Pool & Sauna
- Communal Roof Garden
- Excellent City Centre Location

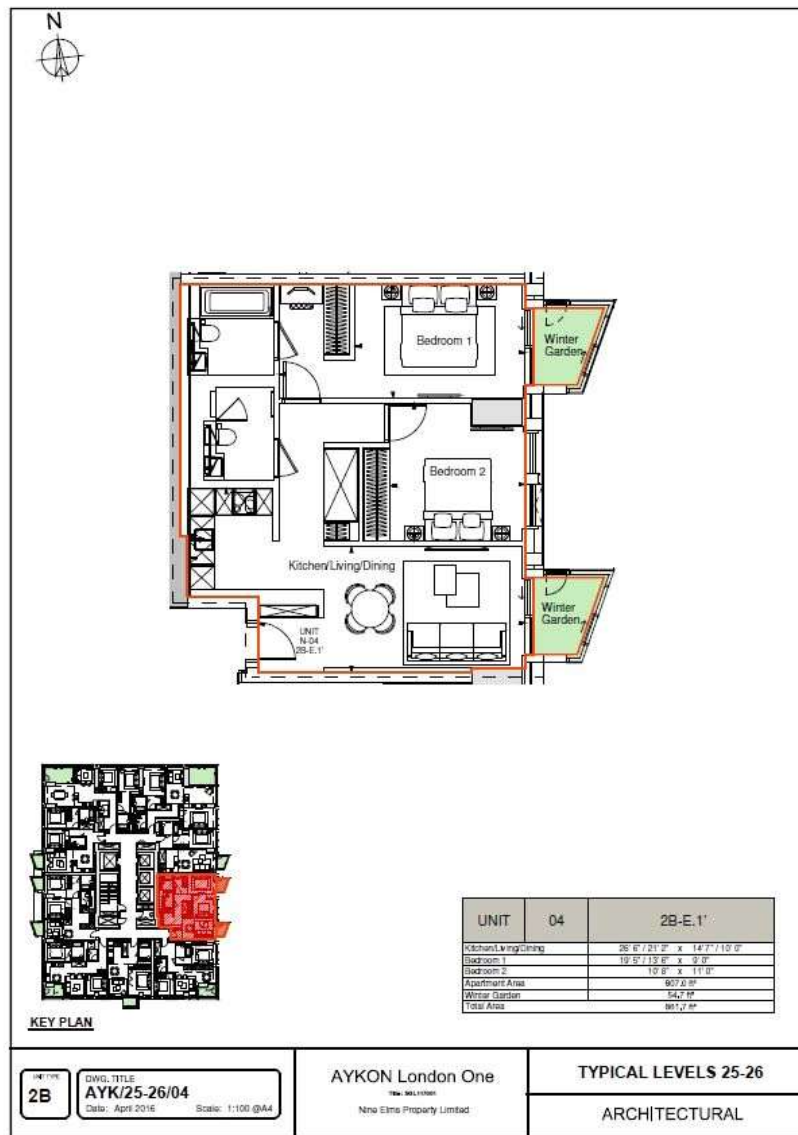
TENURE Leasehold

LOCAL AUTHORITY Lambeth Council

EPC BAND To be confirmed







Wandsworth Sales 020 8767 7711

wandsworth@carterjonas.co.uk
19 Bellevue Road, London, SW17 7EG

carterjonas.co.uk
Offices throughout the UK

Exclusive UK affiliate of
CHRISTIE'S
 INTERNATIONAL REAL ESTATE

IMPORTANT INFORMATION

These particulars are for general information purposes only and do not represent an offer or contract or part of one. Carter Jonas or anyone in their employment has made every attempt to ensure that the particulars and other information provided are as accurate as possible and they are not intended to amount to advice on which you should rely as being factually accurate. Full information which may be relevant to your decision regarding the property can be found on the property listing on carterjonas.co.uk or, (including off market properties) on the brochure or a separately available material information sheet. We would advise you to confirm the details of any material information prior to any offer being submitted. You should not assume that the property has all necessary planning, building regulations or other consents and Carter Jonas has not tested any services, facilities or equipment. Any measurements and distances given are approximate only. Where Carter Jonas has been provided with a floorplan by a third party, we cannot guarantee that the floorplan has been measured in accordance with IPMS. Purchasers must satisfy themselves of all of the aforementioned by independent inspection or otherwise. Our images only represent part of the property as it appeared at the time they were taken and do not represent the furnishings included; these are confirmed in a separate inventory. If you require further information, please contact us.