



RYE HOUSE, CRAVEN COURT, HELPERBY
£850,000

Carter Jonas

RYE HOUSE, HELPERBY, YO61 2AA

Enjoying a semi-rural position just off Back Lane, this highly individual house is a spectacular conversion of a former agricultural barn with stunning larch cladding on the first floor complimenting the brickwork below.

This distinctive home offers accommodation suited to modern lifestyles and open plan living featuring a large kitchen/dining room with bifold doors opening onto the rear garden.

Continuing to take full advantage of the light, the adjoining living room has large picture windows at either side of the log burner in addition to another wall of bifold doors leading to the York stone patio and garden beyond.

The property offers approximately 2000 sq ft of exceptional living accommodation on the ground floor with four of the five bedrooms situated on this level, one with an en-suite shower room, in addition to a house bathroom. Oak flooring is fitted in the main living areas with a ground source heat pump supplying underfloor heating to the ground floor of the home.

The spectacular full height glass entrance ensures the property is filled with light and showcases a beautiful oak staircase leading to the first-floor galleried landing. This floor offers the principal bedroom with ensuite shower room. A further 1900 sq ft of space is boarded out for new owners to utilise. Its use as habitable space may be subject to planning.

The property also benefits from an oaked clad double garage, a large garden and superfast fibre broadband.

This exclusive address has a real sense of individuality and open space while the location provides easy access to the numerous facilities available close by.

Helperby is situated between the popular market towns of Easingwold and Boroughbridge, each with a good range of shops and services, whilst the village itself offers a range of amenities including two public houses, a primary school, a doctor's surgery, a village hall and a church as well as excellent fishing on the Swale. There is easy access to the A19 and to York, Harrogate and Leeds. There are a number of highly regarded schools in the area including Cundall Manor, Queen Mary's, Ripon Grammar, St Peter's and Bootham in York as well as Ampleforth College.

TENURE Freehold

EPC BAND B

AN EXCEPTIONAL AND UNIQUE FIVE BEDROOM CONTEMPORARY BARN CONVERSION SITUATED IN AN IDYLIC SETTING IN THIS PICTURESQUE VILLAGE TO THE NORTH OF YORK.





Classification L2 - Business Data



Classification L2 - Business Data

Rye House

Approximate Gross Internal Floor Area = 386.0 sq m / 4155 sq ft

Ground Floor Area = 193.8 sq m / 2086 sq ft

First Floor Living Space Area = 27.5 sq m / 297 sq ft

First Floor Storage Area = 164.6 sq m / 1772 sq ft

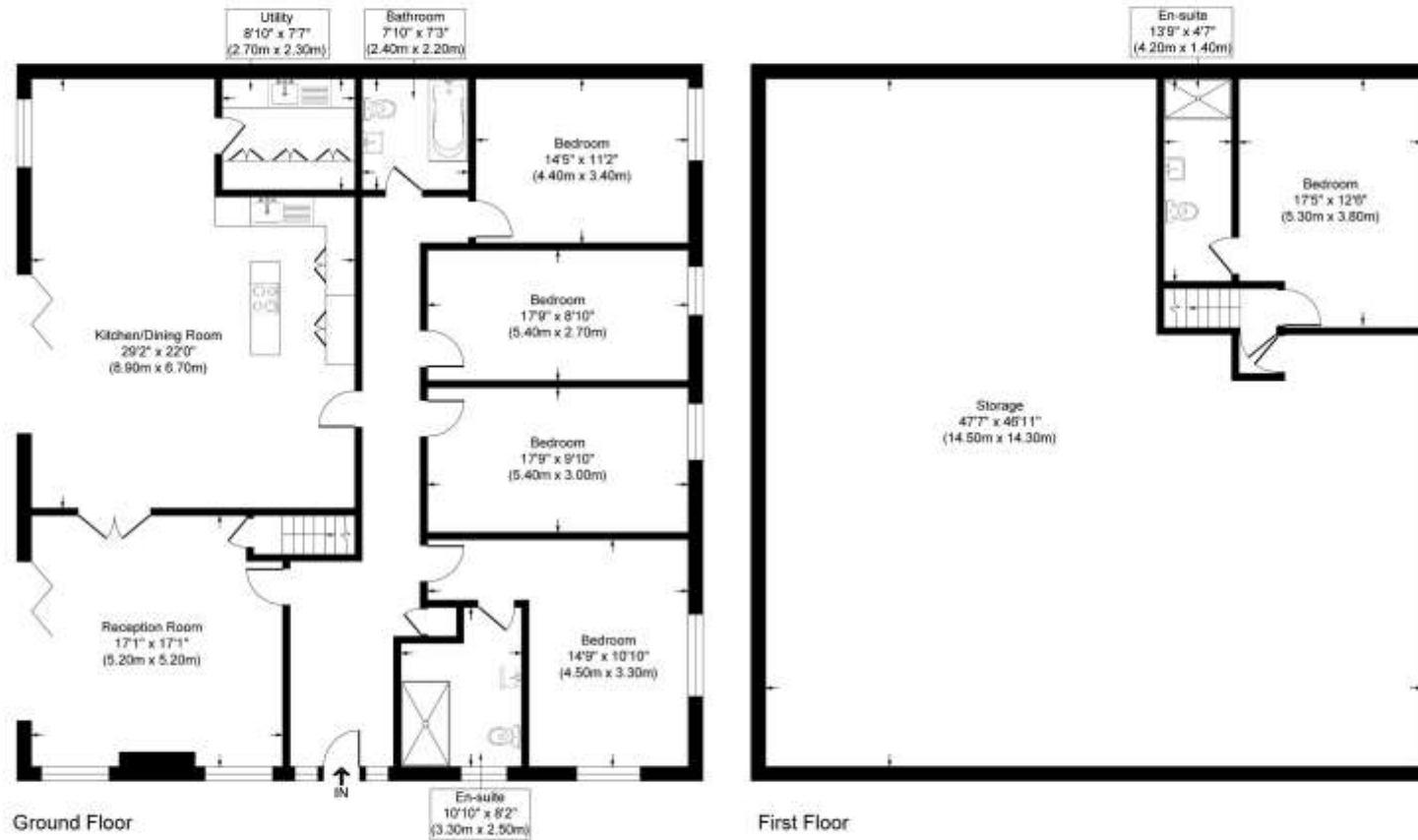


Illustration for identification purposes only, measurements are approximate, not to scale.

York 01904 558200

york@carterjonas.co.uk
82 Micklegate, York, YO1 6LF

carterjonas.co.uk
Offices throughout the UK

Exclusive UK affiliate of
CHRISTIE'S
INTERNATIONAL REAL ESTATE

IMPORTANT INFORMATION

These particulars are for general information purposes only and do not represent an offer of contract or part of one. Carter Jonas has made every attempt to ensure that the particulars and other information provided are as accurate as possible and are not intended to amount to advice on which you should rely as being factually accurate. You should not assume that the property has all necessary planning, building regulations or other consents and Carter Jonas have not tested any services, facilities or equipment. Any measurements and distances given are approximate only. Purchasers must satisfy themselves of all of the aforementioned by independent inspection or otherwise. Although we make reasonable efforts to update our information, neither Carter Jonas LLP nor anyone in its employment or acting on its behalf makes any representations warranties or guarantees, whether express or implied, in relation to the property, or that the content in these particulars is accurate, complete or up to date. Our images only represent part of the property as it appeared at the time they were taken. If you require further information please contact us.

Classification L2 - Business Data