



CHARLOTTE STREET, BATH, BA1
£3,500 per month*

Carter Jonas

CHARLOTTE STREET, BATH, BA1 2NE

Wonderful Georgian Townhouse in Bath City Centre situated just off Queen Square with the benefit of a garden and an off street parking space.

- 4 Bedrooms
- sitting room
- dining room
- kitchen
- 2 bathrooms
- garden
- parking space

LOCATION

THE PROPERTY

Wonderful recently renovated and decorated Georgian townhouse situated just off Queen Square which offers smart family accommodation for those desiring City Centre living. The entrance hallway has wood flooring and leads through to Living Room with double doors through to dining room. The hallway leads through to the Kitchen at the rear which has all appliances and glass doors out onto a terrace and small rear garden. There is a utility room on the mezzanine level with washing machine and tumble dryer. On the first floor is the master bedroom suite with large bathroom with separate shower and two double bedrooms on the second floor and a family bathroom and double bedroom on the third floor. To the rear is a terrace, garden and parking for two cars. An immaculate city home. Council Tax Band C. REGRET NO STUDENTS OR SHARERS.

One week's rent as holding deposit = £865.38

(this is deducted from first month's rent)

Five weeks' deposit = £4326.90 Six weeks' deposit = £5192.28
(non housing act tenancy)

OUTSIDE



ADDITIONAL INFORMATION

Offers	Available for a minimum term of 12 months longer terms will be considered
--------	---

Viewing	Strictly by appointment
---------	-------------------------

Local Authority	- Council Tax Band C
-----------------	----------------------

Directions	
------------	--

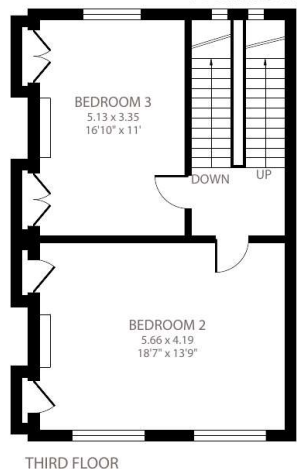
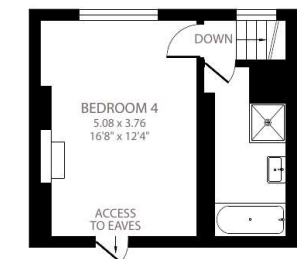
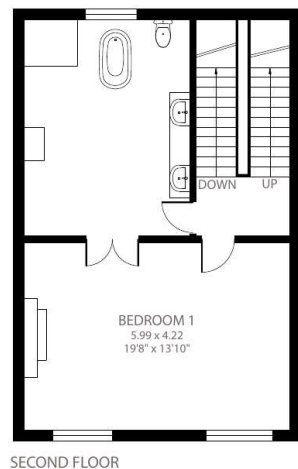
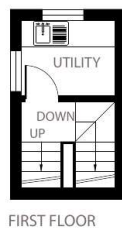
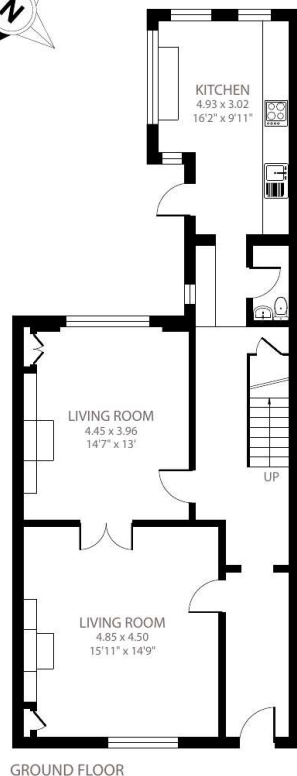




Charlotte Street, Bath, BA1

Approximate Area = 2408 sq ft / 224 sq m (includes garage)

For identification only - Not to scale



Certified
Property
Measurer

Floor plan produced in accordance with RICS Property Measurement Standards incorporating International Property Measurement Standards (IPMS2 Residential). © nlcocom 2022. Produced for Carter Jonas. REF: 892070

T: 01225 747250

5-6 Wood Street, Bath, Somerset, BA1 2JQ

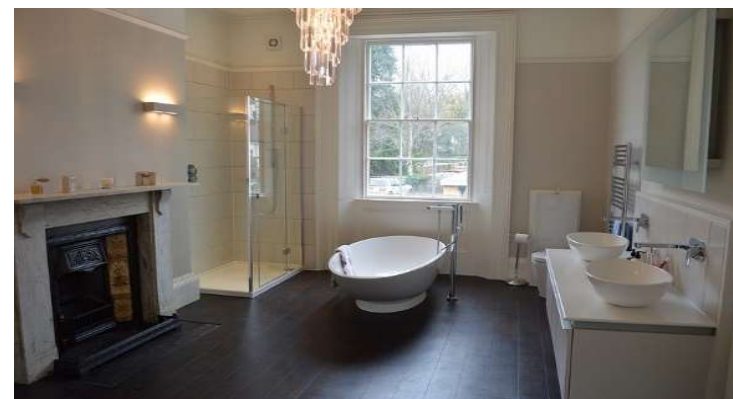
E: bath@carterjonas.co.uk

carterjonas.co.uk

Offices throughout the UK



Classification L2 - Business Data



IMPORTANT INFORMATION

These particulars are for general information purposes only and do not represent an offer of contract or part of one. Carter Jonas has made every attempt to ensure that the particulars and other information provided are as accurate as possible and are not intended to amount to advice on which you should rely as being factually accurate. You should not assume that the property has all necessary planning, building regulations or other consents and Carter Jonas have not tested any services, facilities or equipment. Any measurements and distances given are approximate only. Where Carter Jonas have been provided with a floorplan by a third party, we can not guarantee that the floorplan has been measured in accordance with IPMS. Purchasers or prospective tenants must satisfy themselves of all of the aforementioned by independent inspection or otherwise. Although we make reasonable efforts to update our information, neither Carter Jonas nor anyone in its employment or acting on its behalf makes any representations warranties or guarantees, whether express or implied, in relation to the property, or that the content in these particulars is accurate, complete or up to date. Our images only represent part of the property as it appeared at the time they were taken and do not represent the furnishings included, these are confirmed in a separate inventory. If you require further information please contact us.

*Administration fees may apply depending on tenancy type. Please contact your local branch for this information.