



**CIRCUS MEWS, BATH, BA1**  
£1,750 per month\*

**Carter Jonas**

# CIRCUS MEWS, BATH, SOMERSET, BA1 2PW

A lovely two bedroom, two bathroom Mews House in Circus Mews, which has been the subject of complete renovation. It has the benefit of an off street parking space.

- Living Room
- Kitchen
- Two Bedrooms
- Two Bathrooms
- Off Street parking space

## LOCATION

## THE PROPERTY

Circus Mews enjoys a quiet spot just up behind The Circus and adjacent to Catharine Place, a most perfect City location. This pretty Mews House is accessed via an archway and has a cobbled courtyard entrance. The property comprises a newly fitted kitchen with oven with hob, integrated fridge/freezer, and dishwasher. The hallway leads through to an L shaped Sitting Room. There is a cloakroom on the ground floor which houses the washing machine. Stairs rise from the hallway to the first floor where there is a double bedroom with en suite shower room, a second double bedroom and a bathroom. To the front of the property in the courtyard is a single off street parking space. This really is a very lovely Mews House which has been the subject of complete renovation in recent months. Would suit a professional couple or single. The local amenities in Margarets Buildings offer laundrette, boutique, cafe, restaurant, gallery and beauty salon. Offered unfurnished and available now. Council Tax Band E. EPC Band D.

Holding deposit of one week's rent = £403.84 (deducted from first month's rent) Five weeks' deposit = £2019.23 Six weeks' - non housing act tenancy - £2423.04

## OUTSIDE





---

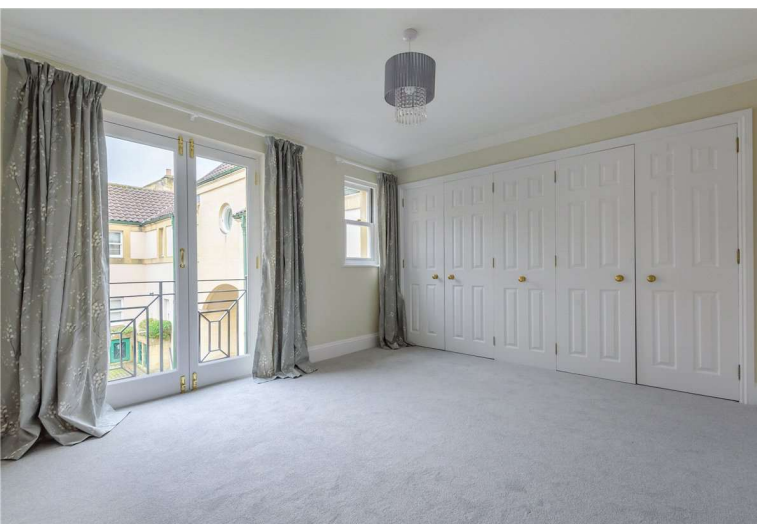
## ADDITIONAL INFORMATION

Offers	Available for a minimum term of 12 months longer terms will be considered
--------	---

Viewing	Strictly by appointment
---------	-------------------------

Local Authority	- Council Tax Band E
-----------------	----------------------

Directions	
------------	--

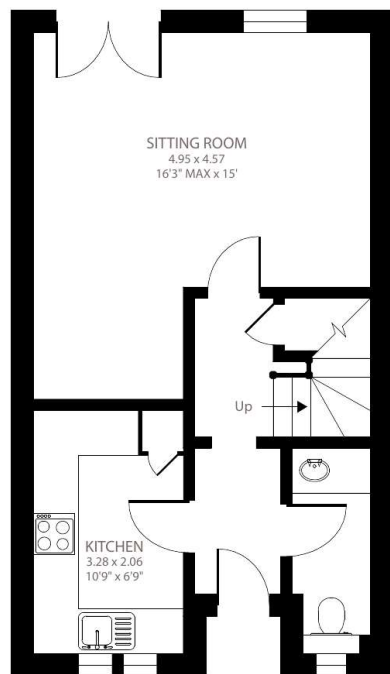




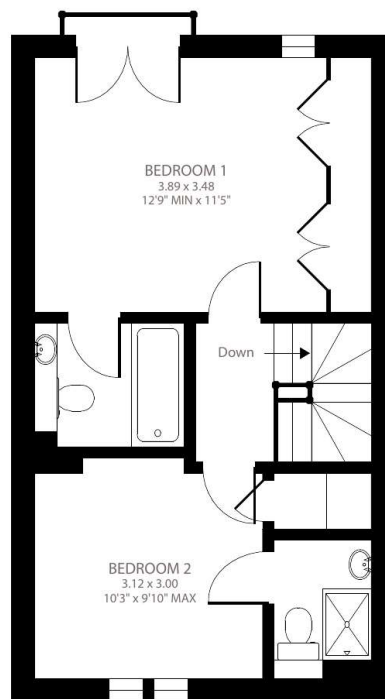
## Circus Mews, Bath, BA1

Approximate Area = 815 sq ft / 75.7 sq m

For identification only - Not to scale



GROUND FLOOR

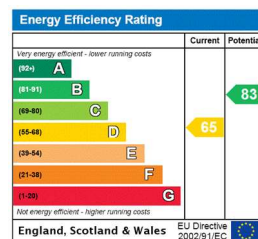


FIRST FLOOR



Certified  
Property  
Measurer

Floor plan produced in accordance with RICS Property Measurement Standards incorporating International Property Measurement Standards (IPMS2 Residential). © nlcocom 2022. Produced for Carter Jonas. REF: 927174



T: 01225 747250

5-6 Wood Street, Bath, Somerset, BA1 2JQ

E: bath@carterjonas.co.uk

carterjonas.co.uk

Offices throughout the UK



Classification L2 - Business Data

### IMPORTANT INFORMATION

Our property particulars do not represent an offer or contract, or part of one. The information given is without responsibility on the part of the agents, seller(s) or lessor(s) and you should not rely on the information as being factually accurate about the property, its condition or its value. Neither Carter Jonas LLP nor anyone in its employment or acting on its behalf has authority to make any representation or warranty in relation to this property. We have not carried out a detailed survey, nor tested the services, appliances or fittings at the property. The images shown may only represent part of the property and are as they appeared at the time of being photographed. The areas, measurements and distances are approximate only. Where Carter Jonas have been provided with a floorplan by a third party, we can not guarantee that the floorplan has been measured in accordance with IPMS. Any reference to alterations or use does not mean that any necessary planning permission, building regulation or other consent has been obtained. The VAT position relating to the property may change without notice. Administration fees may apply depending on tenancy type. Please contact your local branch for this information.