



CORSHAM ROAD, LACOCK, SN15
£3,500 per month*

Carter Jonas

MONKSWAY, CORSHAM ROAD, LACOCK, CHIPPENHAM,

WILTSHIRE SN10 3LJ

LOCATION

The centre of the National Trust village of Lacock is less than half a mile, and the pretty town of Corsham is 3 miles to the west and Bath city centre is 14 miles to the west. Junction 17 of the M4 is 3.5 miles to the north. Pets by negotiation. A really wonderful family home. Available now.

THE PROPERTY

We are very pleased to be able to offer this most wonderful family home in Corsham Road, Lacock. Approached via a gated entrance, the property has been completely re-modelled and renovated to provide modern, light and bright accommodation of hallway through to Living Room with woodburner, Study or TV room, fabulous kitchen/dining room, utility room and 4th bedroom with en suite shower room on the ground floor and 3 further bedrooms, 2 with en suite bathroom and a further family bathroom on the first floor. The newly installed kitchen has integrated appliances of two ovens, induction hob, overhead extractor hood, fridge/freezer whilst the utility room has a washing machine and tumble dryer. The kitchen is open through to the dining room which benefits from two sets of bi-fold doors that fully open out onto the rear south facing terrace and garden. Two of the bedrooms on the first floor have en-suite shower rooms and the family bathroom has bath and separate shower. Externally there is a large terrace to the rear leading on to a huge enclosed garden which backs onto an open field. The gated entrance at the front leads to a large driveway with parking for approx. 4 or 5 vehicles. There is gas central heating and it is EPC Band C. Council tax band F.

Holding deposit of one week's rent = £888.46 (deducted from first

A wonderful newly renovated detached home situated 12 miles east of Bath with 4 bedrooms, 4 bathrooms and a large garden to the rear.



month's rent)

Five weeks' rent deposit = £4442.30

Six weeks rent deposit (NHA tenancy) = £5330.76

OUTSIDE

This really is a most wonderfully private property set well back off the Corsham Road.

ADDITIONAL INFORMATION

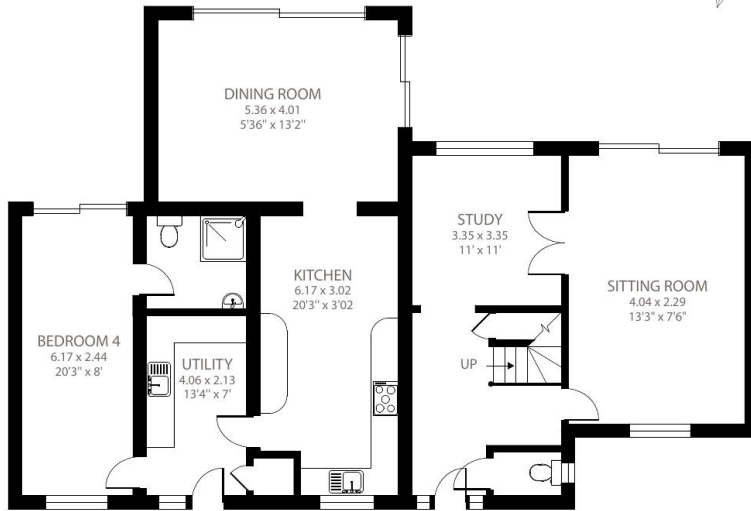
Offers	Available for a minimum term of 12 months longer terms will be considered
Viewing	Strictly by appointment
Local Authority	- Council Tax Band F
Directions	



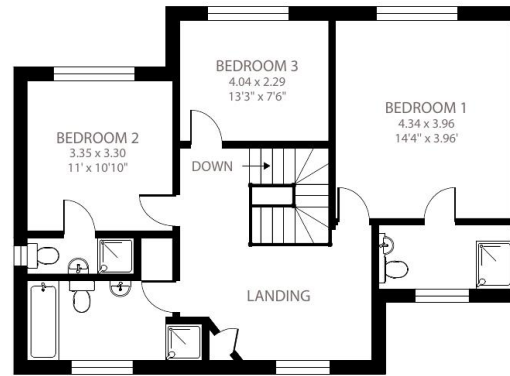
Corsham Road, Lacock, Chippenham, SN15

Approximate Area = 2165 sq ft / 201.1 sq m

For identification only - Not to scale



GROUND FLOOR



FIRST FLOOR



Certified
Property
Measurer

Floor plan produced in accordance with RICS Property Measurement Standards incorporating International Property Measurement Standards (IPMS2 Residential). © nlcocom 2023. Produced for Carter Jonas. REF: 951485

T: 01225 747250

5-6 Wood Street, Bath, Somerset, BA1 2JQ

E: bath@carterjonas.co.uk

A member of



Exclusive UK affiliate of

CHRISTIE'S
INTERNATIONAL REAL ESTATE

Classification L2 - Business Data



IMPORTANT INFORMATION

These particulars are for general information purposes only and do not represent an offer of contract or part of one. Carter Jonas has made every attempt to ensure that the particulars and other information provided are as accurate as possible and are not intended to amount to advice on which you should rely as being factually accurate. You should not assume that the property has all necessary planning, building regulations or other consents and Carter Jonas have not tested any services, facilities or equipment. Any measurements and distances given are approximate only. Where Carter Jonas have been provided with a floorplan by a third party, we can not guarantee that the floorplan has been measured in accordance with IPMS. Purchasers or prospective tenants must satisfy themselves of all of the aforementioned by independent inspection or otherwise. Although we make reasonable efforts to update our information, neither Carter Jonas nor anyone in its employment or acting on its behalf makes any representations warranties or guarantees, whether express or implied, in relation to the property, or that the content in these particulars is accurate, complete or up to date. Our images only represent part of the property as it appeared at the time they were taken and do not represent the furnishings included, these are confirmed in a separate inventory. If you require further information please contact us.

*Administration fees may apply depending on tenancy type. Please contact your local branch for this information.