



ALFRED STREET, BATH, BA1
£2,000 per month*

Carter Jonas

FLAT 2, ALFRED STREET, BATH, SOMERSET, BA1 2QU

- Open plan living room/kitchen
- 2 bedrooms
- 2 bathrooms
- utility room

THE PROPERTY

REGRET NO STUDENTS. An incredible space in a desirable central position in Bath. This is a stunning, central, laterally converted apartment within a Grade II listed building on a popular side street. Beautifully renovated and fitted to an exceptional standard throughout, the versatile layout provides two bedrooms, two bathrooms, utility room and an expansive open plan living space and kitchen. The property has large south facing sash windows across the front with working shutters and an open fireplace. Engineered wood floors, graphite grey cast iron radiators and modern fittings mix with the traditional to great effect and are all tied together by intelligent use of colour and design aesthetic. The open-plan sitting and kitchen is a light, bright space with 3 large sash windows, being the width of an entire townhouse. There is space enough here for the entire family, sofas and chairs as well as dining furniture. An island unit sits in the middle of the kitchen with white granite worktops and plenty of storage, a pretty window seat is built into the corner of the room, giving a lovely view out over the surrounding Georgian buildings. The master bedroom has a large en suite shower room and has built in storage to the chimney breast. There is also a spacious family bathroom with walk in shower and freestanding bath. A handy utility room provides space for a washing machine and dryer, as well as sink and extra worktop area. The entrance hall leads through to a generous sized central vestibule that is large enough for use as a study/home office. Offered furnished.

Alfred Street is an attractive cul de sac at the bottom of Lansdown Road made up of Georgian properties with a pub, art gallery, Woods Restaurant and The Boston Tea Party café. At the end of the road is the Assembly Rooms. A pedestrian walkway leads through further shops, and into Bath City centre.

A substantial, beautifully renovated second floor 2 bedroom, 2 bathroom lateral city apartment of exceptional quality and in an excellent central Bath location. Offered furnished.



Available for an initial 12 month tenancy.

EPC Rating C. Council Tax Band C (please see Bath & North East Somerset website for current cost)

Mains electric, gas and mains water.

Parking: One parking permit can be applied for in central zone

Internet & Mobile: Further information on availability and speeds can be found on the Ofcom website.

At a rent of £1950.00 per calendar month: Holding deposit of 1 week's rent £450.00 (deducted from first month's rent) Security deposit of 5 weeks rent £2250.00

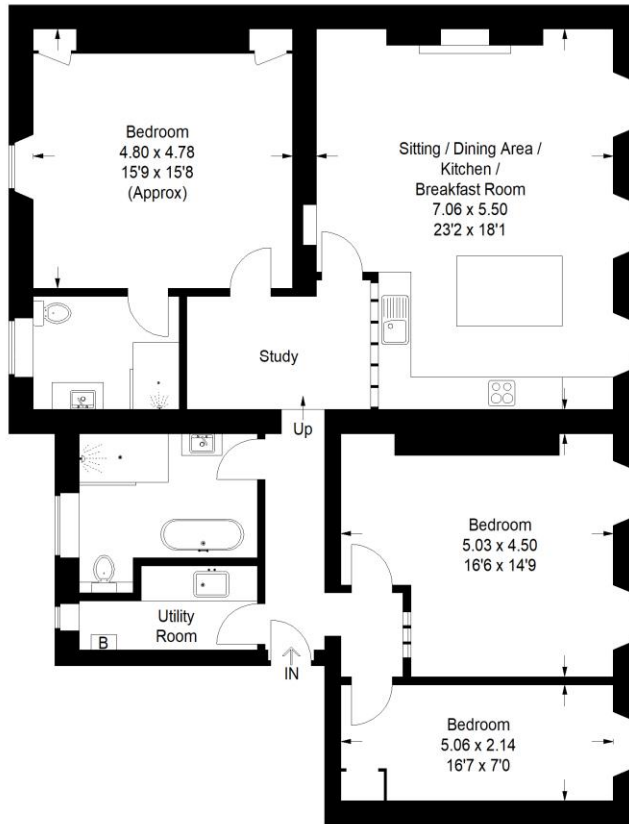
ADDITIONAL INFORMATION

Offers	Available for a minimum term of 12 months longer terms will be considered
Viewing	Strictly by appointment
Local Authority	- Council Tax Band C
Directions	



16/17 Alfred Street

Approximate Gross Internal Area = 136.7 sq m / 1471 sq ft



Second Floor

Illustration for identification purposes only, measurements are approximate, not to scale.
FloorplansUsketch.com © 2021 (ID 722235)



T: 01225 747250

5-6 Wood Street, Bath, Somerset, BA1 2JQ

E: bath@carterjonas.co.uk



Exclusive UK affiliate of

CHRISTIE'S
INTERNATIONAL REAL ESTATE

Classification L2 - Business Data

IMPORTANT INFORMATION

These particulars are for general information purposes only and do not represent an offer or contract or part of one. Carter Jonas or anyone in their employment has made every attempt to ensure that the particulars and other information provided are as accurate as possible and they are not intended to amount to advice on which you should rely as being factually accurate. Full information which may be relevant to your decision regarding the property can be found on the property listing on carterjonas.co.uk or a separately available material information sheet, and we would advise you to confirm the details of any material information prior to any offer being submitted. You should not assume that the property has all necessary planning, building regulations or other consents and Carter Jonas has not tested any services, facilities, or equipment. Any measurements and distances given are approximate only. Where Carter Jonas has been provided with a floorplan by a third party, we cannot guarantee that the floorplan has been measured in accordance with IPMS. Purchasers or prospective tenants must satisfy themselves of all of the aforementioned by independent inspection or otherwise. Our images only represent part of the property as it appeared at the time they were taken and do not represent the furnishings included; these are confirmed in a separate inventory. If you require further information, please contact us. *Administration fees may apply depending on tenancy type. Please contact your local branch for this information.