



GROVE LODGE
Bath

Carter Jonas

GROVE LODGE, 11 LAMBRIDGE, BATH, BA1 6BJ

Entrance hall • Central hall • Sitting room • Drawing room • Kitchen/dining room • Secondary kitchen • Utility • Victorian conservatory • Cellar • Pantry • Garden room/snug • Two downstairs bathrooms • Five bedrooms • Sitting/dressing room to principal bedroom • Three en suite bathrooms • Family shower room • Gardens to front and rear • Three storage sheds • Gated side access

DESCRIPTION

Grove Lodge is a substantial link-detached Georgian residence built circa 1788, full of beautiful period features including stone floor hallways, marble fireplaces, exposed wood flooring, shuttered windows and a stunning wisteria clad frontage. There is the most wonderful magnolia tree to the front lawn and separate utility access.

The original front door opens into the generous entrance hall with an exposed oak floor, a half-moon top-light and a stained glass window. There is also a wine store in the entrance hall with the original stone wine bins intact. The main hall interconnects with the ground floor accommodation and has a gorgeous Bath stone and slate tessellated pattern floor. The main staircase rises from here to the top of the house with a turned mahogany topped rail and banister. There is access to the cellar through an ingenious mechanism wood door. The cellar is currently used for storage but could be used as a gym or games room.

The bright, elegant sitting and drawing rooms look out to the front of the property both featuring high ceilings, tall, shuttered windows and period marble fireplaces. The drawing room looks out through large bay windows to the front gardens and has a tranquil feel. The adjoining bathroom links through to a charming Victorian greenhouse and utility room.

AN IMPRESSIVE AND BEAUTIFULLY PRESENTED GRADE II LISTED GEORGIAN RESIDENCE WITH FAR REACHING SOUTHERLY VIEWS OVER THE AVON VALLEY. THE PROPERTY BENEFITS FROM APPROXIMATELY 4,000 SQ FT OF ACCOMMODATION AND DELIGHTFUL GARDENS.







There is a well-appointed secondary kitchen which could be used as a cook's/chef's kitchen in tandem with the principal kitchen. The main kitchen/dining room has a newly fitted Neptune kitchen with quartz worktops and looks out through shuttered windows to the rear garden, with an exposed Bath stone floor and space for an island unit, dining table and chairs. A large garden room/snug sits to the side of the kitchen and has its own bathroom and access to the rear garden.

To the first floor the landing features a Butler's table and consists of the principal bedroom suite and two further double bedrooms. The principal bedroom is of a generous size with amazing views over to Bathampton and has its own sitting/dressing room and a spacious en suite bathroom. The second bedroom also has its own en suite. To the second floor are two excellent double bedrooms, one with en suite bathroom. The bedrooms have high ceilings and large south-facing windows with even more far-reaching views over the Avon Valley. A shower room also sits on this floor.

The gardens to the front are bounded by stone walls, with a walled gated side access. There is high laurel hedging to the front boundary, a stunning magnolia tree and a mature planted border. The large central lawn is separated from the house by the original stone balustrade. Clematis and Wisteria climb the front here and frame the front door and sitting room windows beautifully. The rear garden is wide and level and of an excellent size, narrowing to the rear where a large store can be found. The lawn has a beautifully manicured apple tree to the centre. There is space for seating both on the lawn and the patio immediately to the rear of the house.

SITUATION

With southerly views over the Avon Valley, Lambridge is on the eastern outskirts of Bath, approximately 1.25 miles from the centre and very well placed for easy access to the M4. It is an easy walk into town, and there is a bus stop over the road taking you straight into town and onto the railway station. The house stands well back from the road and is secluded by its matured gardens and stone walls. The village of Larkhall has some excellent independent shopping facilities with a post office, delicatessen, chemist,



hardware, greengrocer, theatre, bistro, doctors' surgery, vet and primary school within 0.5 miles. There is direct access to the canal path over the road along Grosvenor Bridge Road taking you one direction all the way to Bradford on Avon traffic free and in the other to Bath city centre via Sydney Gardens and Great Pulteney Street. Private schooling options are many, with King Edwards School not far as well as Kingswood and the Royal High school easily accessible on the way up Lansdown.

Bath is a World Heritage Site famed for its Georgian architecture and Roman heritage and provides an extensive range of business, entertainment and cultural facilities along with two universities. There are well regarded schools in both the state and independent sectors and a mainline rail link to

London Paddington (journey time from 82 mins) and Bristol Temple Meads (journey time from 15 mins). Junction 18 of the M4 motorway is about 9 miles to the north and Bristol International airport is some 20 miles to the northwest.

ADDITIONAL INFORMATION

Tenure: Freehold

Planning: Listed Grade II

Services: All mains services are connected.

Council Tax: Band G

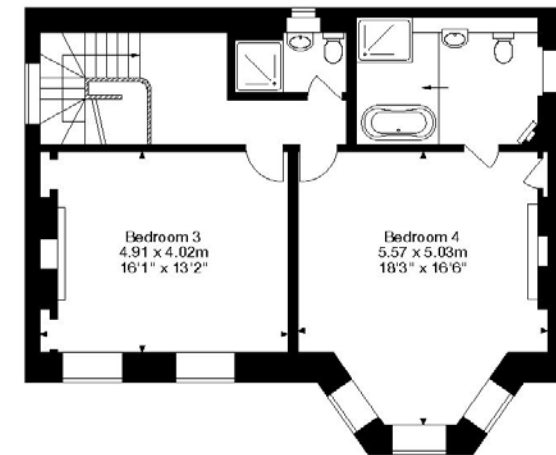
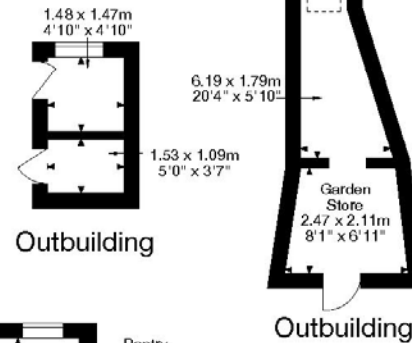
EPC: Band E

Parking: On-street permit parking.

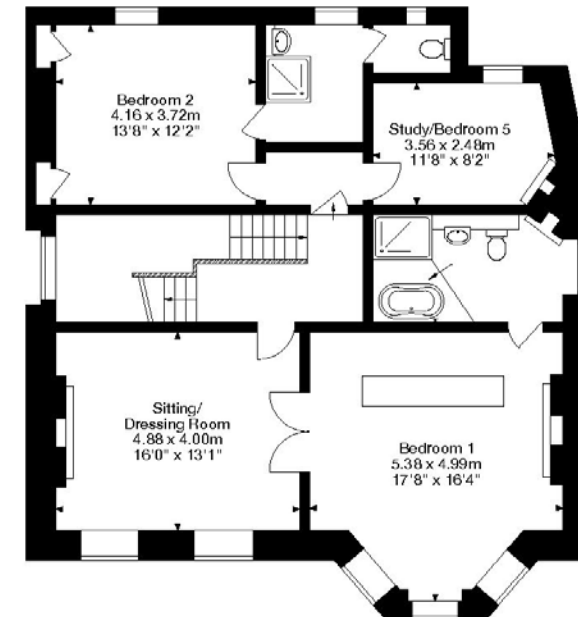
Viewing: Strictly by appointment with Carter Jonas.



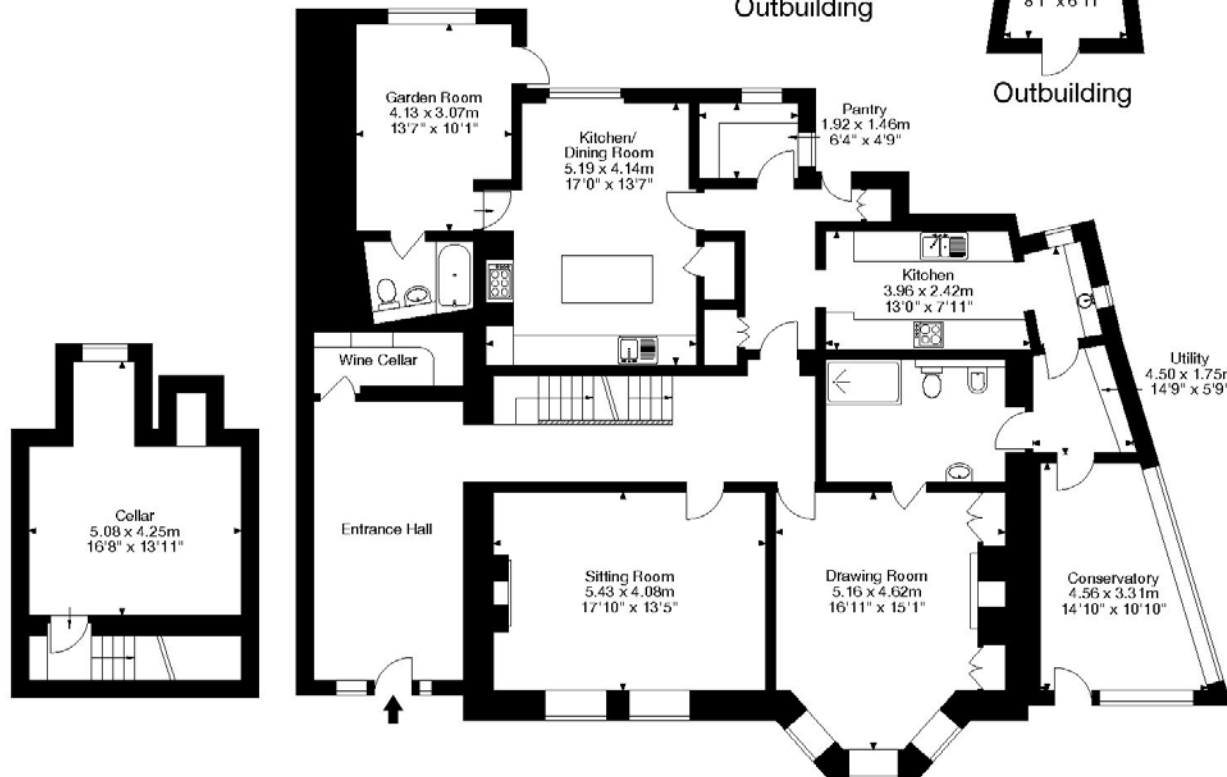
Grove Lodge, 11 Lambridge, Bath, BA1 6BJ
 Gross Internal Area (Approx.)
 Main House = 376 sq m / 4,047 sq ft
 Outbuildings = 16 sq m / 172 sq ft
 Total Area = 394 sq m / 4,240 sq ft



Second Floor



First Floor



Ground Floor

Cellar

Bath 01225 747250

bath@carterjonas.co.uk

5-6 Wood Street, Bath, BA1 2JQ

carterjonas.co.uk

Offices throughout the UK

Exclusive UK affiliate of

CHRISTIE'S
 INTERNATIONAL REAL ESTATE

IMPORTANT INFORMATION

These particulars are for general information purposes only and do not represent an offer of contract or part of one. Carter Jonas has made every attempt to ensure that the particulars and other information provided are as accurate as possible and are not intended to amount to advice on which you should rely as being factually accurate. You should not assume that the property has all necessary planning, building regulations or other consents and Carter Jonas have not tested any services, facilities or equipment. Any measurements and distances given are approximate only. Purchasers must satisfy themselves of all of the aforementioned by independent inspection or otherwise. Although we make reasonable efforts to update our information, neither Carter Jonas LLP nor anyone in its employment or acting on its behalf makes any representations warranties or guarantees, whether express or implied, in relation to the property, or that the content in these particulars is accurate, complete or up to date. Our images only represent part of the property as it appeared at the time they were taken. If you require further information please contact us.