



AINSLIES BELVEDERE, BATH, BA1 5HT
£950 per month*

Carter Jonas

Second Floor one bedroom Flat tucked away in the pretty terrace of Ainslie`s Belvedere - situated just below Camden Crescent.

- 1 Bedroom
- Bathroom
- Sitting Room
- Lovely views
- Kitchen

THE PROPERTY

Second Floor Flat tucked away in the pretty terrace of Ainslie`s Belvedere - situated just below Camden Crescent. With marvellous south facing views across the city from the sitting room, the flat comprises double bedroom with working shutters, sitting room, bathroom with electric shower over bath, and kitchen with fridge, washing machine/dryer and electric cooker. The flat has electric convector heaters and would suit either a single professional or a couple. Available now. Parking permit Central Zone.

Available for an initial 12 month tenancy.

EPC Rating E. Council Tax Band B (please see Bath & North East Somerset website for current cost)

Mains electric, and mains water.

Parking: On street parking via a parking permit.

Internet & Mobile: Further information on availability and speeds can be found on the Ofcom website.

At a rent of £950.00 per calendar month:

Holding deposit of 1 week's rent £219.23 (deducted from first month's rent)

Five weeks' deposit = £1096.15



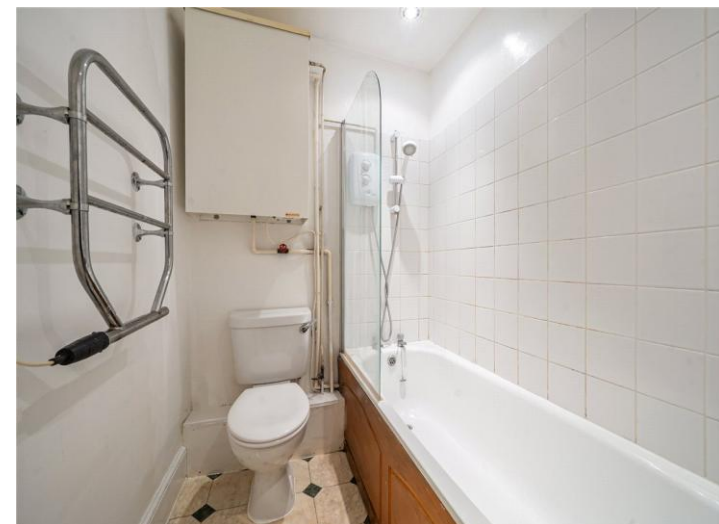
ADDITIONAL INFORMATION

Offers Available for a minimum term of 12 months longer terms will be considered

Viewing Strictly by appointment

Local Authority - Council Tax Band B

Directions



Ainslies Belvedere, Bath, BA1

Approximate Area = 542 sq ft / 50.4 sq m

For identification only - Not to scale



Floor plan produced in accordance with RICS Property Measurement 2nd Edition, Incorporating International Property Measurement Standards (IPMS2 Residential). © nchecon 2026. Produced for Carter Jonas. REF: 1407047

Energy Efficiency Rating		Current	Potential
Very energy efficient - lower running costs			
(92+)	A		
(81-91)	B		
(69-80)	C		
(55-68)	D		
(39-54)	E	47	68
(21-38)	F		
(1-20)	G		
Not energy efficient - higher running costs			
England, Scotland & Wales		EU Directive 2002/91/EC	

T: 01225 747250
 5-6 Wood Street, Bath, Somerset, BA1 2JQ
 E: bath@carterjonas.co.uk



Exclusive UK affiliate of

CHRISTIE'S
 INTERNATIONAL REAL ESTATE

Classification L2 - Business Data

IMPORTANT INFORMATION

These particulars are for general information purposes only and do not represent an offer or contract or part of one. Carter Jonas or anyone in their employment has made every attempt to ensure that the particulars and other information provided are as accurate as possible and they are not intended to amount to advice on which you should rely as being factually accurate. Full information which may be relevant to your decision regarding the property can be found on the property listing on carterjonas.co.uk or a separately available material information sheet, and we would advise you to confirm the details of any material information prior to any offer being submitted. You should not assume that the property has all necessary planning, building regulations or other consents and Carter Jonas has not tested any services, facilities, or equipment. Any measurements and distances given are approximate only. Where Carter Jonas has been provided with a floorplan by a third party, we cannot guarantee that the floorplan has been measured in accordance with IPMS. Purchasers or prospective tenants must satisfy themselves of all of the aforementioned by independent inspection or otherwise. Our images only represent part of the property as it appeared at the time they were taken and do not represent the furnishings included; these are confirmed in a separate inventory. If you require further information, please contact us. *Administration fees may apply depending on tenancy type. Please contact your local branch for this information.