



OLD BOND STREET, BATH, BA1

£1,400 per month*

Carter Jonas

FLAT 3, OLD BOND STREET, BATH, BA1 1BP

A wonderful top floor one bedroom apartment – refurbished over recent years, with attractive entrance hallway and open-plan living room/kitchen

THE PROPERTY

Flat 3, 12 Old Bond Street is situated on the top floor of a Georgian Building in central Bath. The apartment has been subject to refurbishment over recent years, and now offers smart accommodation of entrance hall into study/large hall area. Stairs lead up from the entrance hall to the landing which leads you to the double bedroom, the bathroom (with shower over bath) and open-plan living room/kitchen with appliances of oven with hob, fridge, freezer, dishwasher and washing machine. The apartment has great Bath city views from the living room and bedroom windows. Although only one bedroom, there is additional space in this property of a large hallway area which could easily accommodate an office area. Offered unfurnished and available March 2026. Would suit a professional single or couple. Bath city centre and all its delights are right outside your front door!

Available for an initial 12-month tenancy.

EPC Rating E. Council Tax Band B (please see BANES website for current cost)

Mains electric and mains water.

Parking: Please note, there is no parking at the property, and no permit is available.

Internet & Mobile: Further information on availability and speeds can be found on the Ofcom website.

Holding deposit of one week's rent (deducted from first month's rent) = £323.07

Five week's deposit = £1,615.38

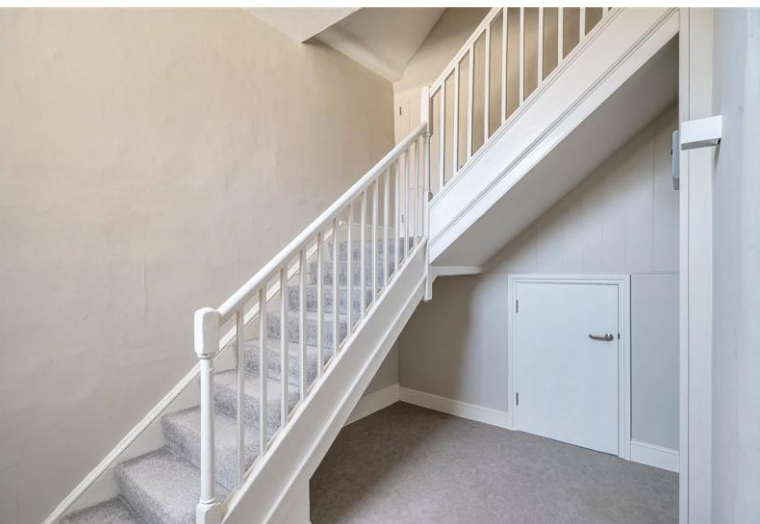


ADDITIONAL INFORMATION

Offers Available for a minimum term of 12 months longer terms will be considered

Viewing Strictly by appointment

Local Authority - Council Tax Band B





Denotes restricted head height

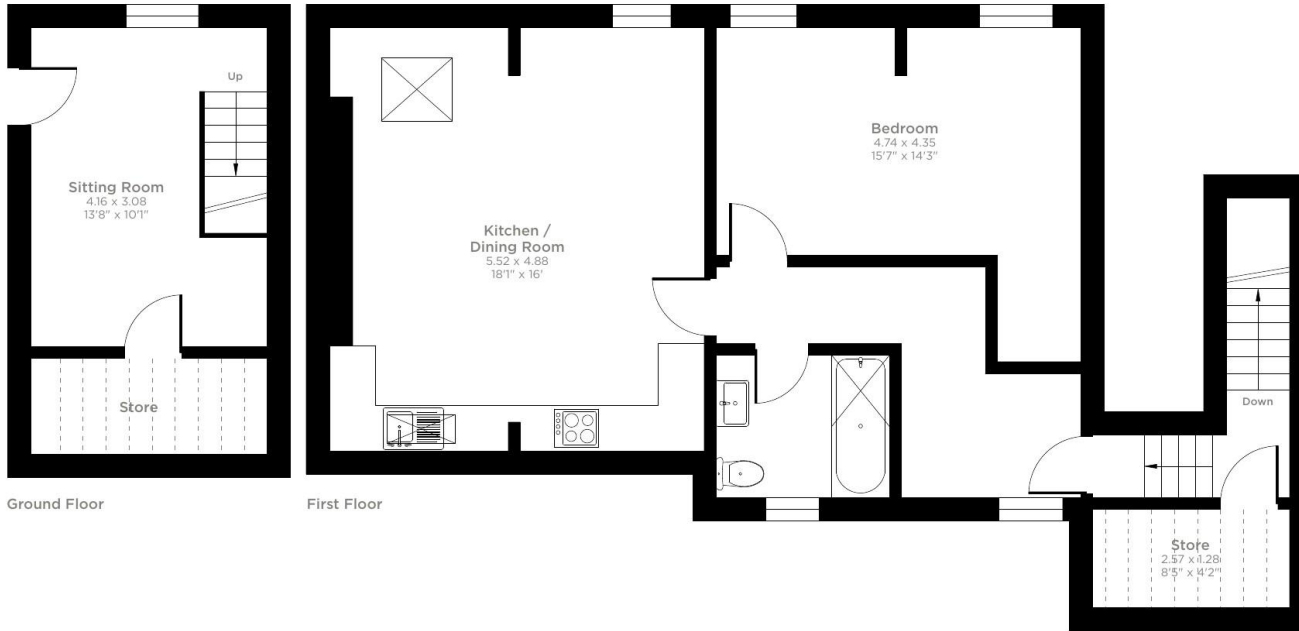
Old Bond Street, Bath, BA1

Approximate Area = 801 sq ft / 74.4 sq m

Limited Use Area(s) = 86 sq ft / 7.9 sq m

Total = 887 sq ft / 82.3 sq m

For identification only - Not to scale



Floor plan produced in accordance with RICS Property Measurement 2nd Edition, Incorporating International Property Measurement Standards (IPMS2 Residential). © nchecon 2026. Produced for Carter Jonas. REF: 1425140

Score	Energy rating	Current	Potential
92+	A		
81-91	B		
69-80	C		
55-68	D		
39-54	E	49 E	52 E
21-38	F		
1-20	G		

T: 01225 747250
5-6 Wood Street, Bath, Somerset, BA1 2JQ
E: bath.enquiries@carterjonas.co.uk



Exclusive UK affiliate of

CHRISTIE'S
INTERNATIONAL REAL ESTATE

Classification L2 - Business Data

IMPORTANT INFORMATION

These particulars are for general information purposes only and do not represent an offer or contract or part of one. Carter Jonas or anyone in their employment has made every attempt to ensure that the particulars and other information provided are as accurate as possible and they are not intended to amount to advice on which you should rely as being factually accurate. Full information which may be relevant to your decision regarding the property can be found on the property listing on carterjonas.co.uk or a separately available material information sheet, and we would advise you to confirm the details of any material information prior to any offer being submitted. You should not assume that the property has all necessary planning, building regulations or other consents and Carter Jonas has not tested any services, facilities, or equipment. Any measurements and distances given are approximate only. Where Carter Jonas has been provided with a floorplan by a third party, we cannot guarantee that the floorplan has been measured in accordance with IPMS. Purchasers or prospective tenants must satisfy themselves of all of the aforementioned by independent inspection or otherwise. Our images only represent part of the property as it appeared at the time they were taken and do not represent the furnishings included; these are confirmed in a separate inventory. If you require further information, please contact us. *Administration fees may apply depending on tenancy type. Please contact your local branch for this information.