



**LOWER GROUND FLOOR FLAT, 7 CHARLOTTE STREET, BATH, BA1 2NE**  
£1,275 per month\*

**Carter Jonas**

---

## A well presented lower ground floor flat in Charlotte Street, just off Queen Square. There is the benefit of an off street parking space to the rear.

- 1 Bedroom
- Sitting Room
- Kitchen/breakfast room
- Bathroom
- Parking space to the rear

### LOCATION

### THE PROPERTY

A well presented lower ground floor apartment located on Charlotte Street, just moments from Queen Square. With its own private entrance directly from the street, this well proportioned home offers an inviting hallway featuring original flagstone flooring, a modern fitted kitchen equipped with a fridge, freezer, oven, gas hob and dresser, a comfortable sitting room with a sofa, a double bedroom, and a bathroom with a shower over the bath. A washing machine is conveniently housed in the understairs cupboard.

The property further benefits from an off street parking space to the rear accessed from the back lane via Charlotte Street carpark entrance.

Available early April 2026

Available for an initial 12-month tenancy.

EPC Rating C. Council Tax Band B (please see BANES website for current cost)

Mains electric, gas and water.

Internet & Mobile: Further information on availability and speeds can be found on the Ofcom website.



At a rent of £1275.00 per calendar month: Holding deposit of 1 week's rent £294.23

Security deposit of 5 weeks rent £1471.15

---

## ADDITIONAL INFORMATION

---

Offers Available for a minimum term of 12 months longer terms will be considered

---

Viewing Strictly by appointment

---

Local Authority - Council Tax Band B

---

Directions

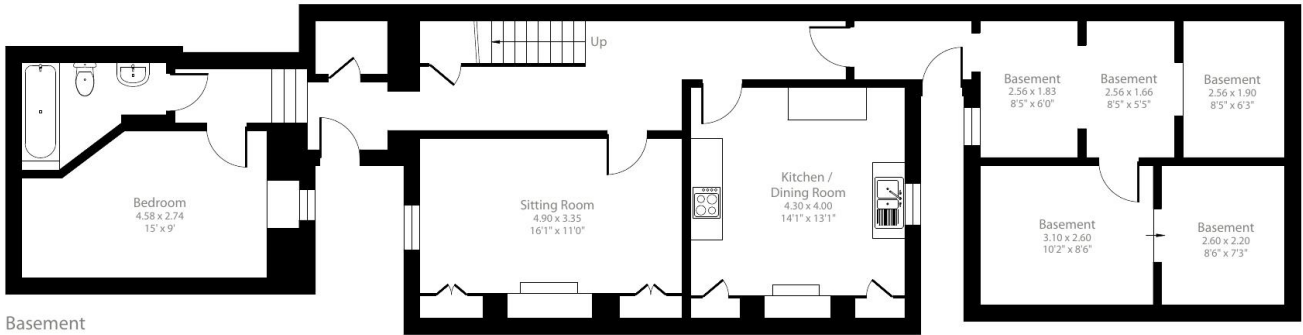
---



# Charlotte Street, Bath, BA1

Approximate Area = 1159 sq ft / 107.6 sq m

For identification only - Not to scale



Floor plan produced in accordance with RICS Property Measurement 2nd Edition, Incorporating International Property Measurement Standards (IPMS2 Residential). © nchecon 2026. Produced for Carter Jonas. REF: 1448163

Energy Efficiency Rating		Current	Potential
Very energy efficient - lower running costs			
(92-100)	A		
(81-91)	B		
(69-80)	C		
(55-68)	D	70	75
(39-54)	E		
(21-58)	F		
(1-10)	G		
Not energy efficient - higher running costs			
England, Scotland & Wales		EU Directive 2002/91/EC	



**T: 01225 747250**  
 5-6 Wood Street, Bath, Somerset, BA1 2JQ  
 E: bath.enquiries@carterjonas.co.uk



Exclusive UK affiliate of  
**CHRISTIE'S**  
 INTERNATIONAL REAL ESTATE

Classification L2 - Business Data

### IMPORTANT INFORMATION

These particulars are for general information purposes only and do not represent an offer or contract or part of one. Carter Jonas or anyone in their employment has made every attempt to ensure that the particulars and other information provided are as accurate as possible and they are not intended to amount to advice on which you should rely as being factually accurate. Full information which may be relevant to your decision regarding the property can be found on the property listing on [carterjonas.co.uk](http://carterjonas.co.uk) or a separately available material information sheet, and we would advise you to confirm the details of any material information prior to any offer being submitted. You should not assume that the property has all necessary planning, building regulations or other consents and Carter Jonas has not tested any services, facilities, or equipment. Any measurements and distances given are approximate only. Where Carter Jonas has been provided with a floorplan by a third party, we cannot guarantee that the floorplan has been measured in accordance with IPMS. Purchasers or prospective tenants must satisfy themselves of all of the aforementioned by independent inspection or otherwise. Our images only represent part of the property as it appeared at the time they were taken and do not represent the furnishings included; these are confirmed in a separate inventory. If you require further information, please contact us. \*Administration fees may apply depending on tenancy type. Please contact your local branch for this information.