



**FOUNTAIN PARK WAY, LONDON, W12**  
£3,600 per month\*

**Carter Jonas**

# FOUNTAIN PARK WAY, LONDON, W12

Carter Jonas are thrilled to offer to the market this stunning two bedroom two bathroom modern apartment. EPC rating: B.

- 2 bedrooms
- 2 bathrooms
- Swimming pool
- Concierge
- Balcony
- Modern

## THE PROPERTY

Carter Jonas are thrilled to offer to the market this stunning two bedroom two bathroom modern apartment.

Situated in a brand new development this property comprises two spacious double bedrooms both with fitted storage, two bright and modern bathrooms one of which being en-suite and a large eat in living space with access to a generous balcony.

The property further benefits from a concierge wooden flooring and access to all of the facilities within the development including a swimming pool and gym.

Tenancy Length: long term

Minimum Tenancy Length: 12 months

Deposit Required: 5 weeks rent

Local Authority: Hammersmith & Fulham

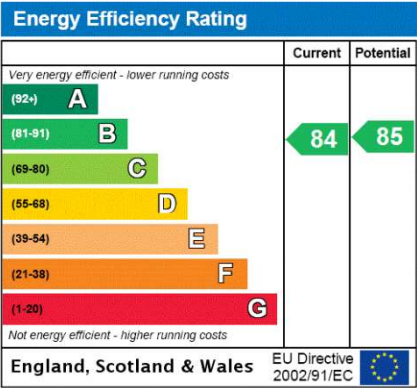
Council Tax Band: F





ADDITIONAL INFORMATION

Offers	Available for a minimum term of 12 months longer terms will be considered
Viewing	Strictly by appointment
Local Authority	Hammersmith and Fulham - Council Tax Band F
EPC rating	B



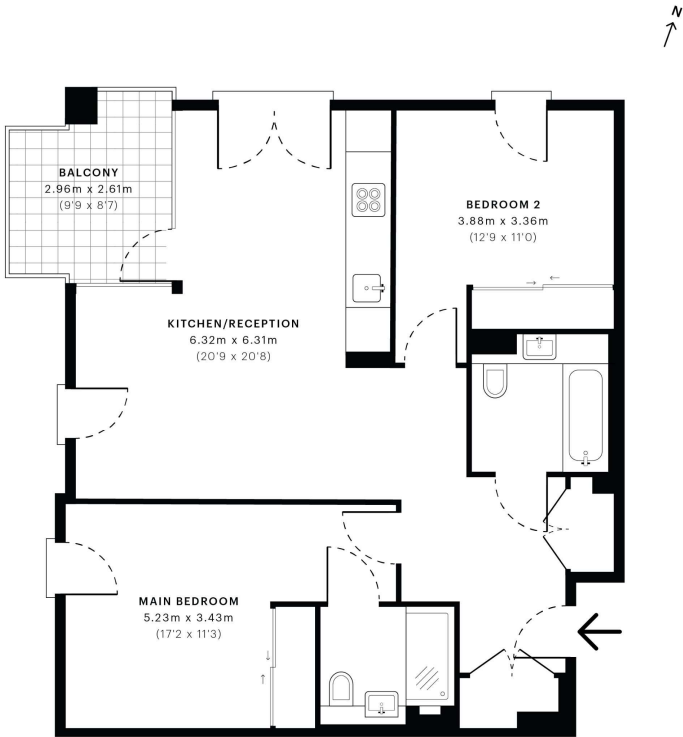
Carter Jonas

White City Living, W12

CAPTURE DATE 06/05/2021 LASER SCAN POINTS 2,377,270

GROSS INTERNAL AREA

73.20 sqm / 787.92 sqft



— First Floor

GROSS INTERNAL AREA (GIA)  
The footprint of the property  
73.20 sqm / 787.92 sqft

NET INTERNAL AREA (NIA)  
Excludes walls and external features  
Includes washrooms, restricted head height  
69.59 sqm / 749.06 sqft

EXTERNAL STRUCTURAL FEATURES  
Balconies, terraces, verandas etc.  
6.64 sqm / 71.47 sqft

RESTRICTED HEAD HEIGHT  
Limited use area under 1.5 m  
0.00 sqm / 0.00 sqft

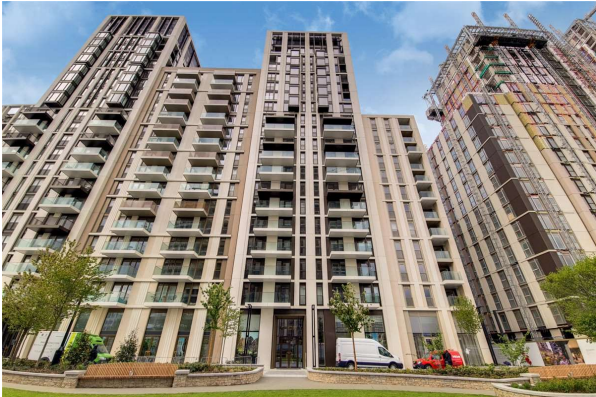


Spec Verified floor plans are produced in accordance with Royal Institution of Chartered Surveyors' Property Measurement Standards. Plots and gardens are illustrative only and excluded from all area calculations. Due to rounding, numbers may not add up precisely. All measurements shown for the individual room lengths and widths are the maximum points of measurements captured in the scan.

IPMS 3B RESIDENTIAL 80.67 sqm / 868.32 sqft

IPMS 3C RESIDENTIAL 77.81 sqm / 837.54 sqft

Spec ID: 609105924048510dde8a7de6



T: 020 7371 1111

8 Addison Avenue, London, W11 4QR

E: hollandpark@carterjonas.co.uk

carterjonas.co.uk  
Offices throughout the UK

A member of  
**onTheMarket.com**  
Classification L2 - Business Data

IMPORTANT INFORMATION

These particulars are for general information purposes only and do not represent an offer of contract or part of one. Carter Jonas has made every attempt to ensure that the particulars and other information provided are as accurate as possible and are not intended to amount to advice on which you should rely as being factually accurate. You should not assume that the property has all necessary planning, building regulations or other consents and Carter Jonas have not tested any services, facilities or equipment. Any measurements and distances given are approximate only. Where Carter Jonas have been provided with a floorplan by a third party, we can not guarantee that the floorplan has been measured in accordance with IPMS. Purchasers or prospective tenants must satisfy themselves of all of the aforementioned by independent inspection or otherwise. Although we make reasonable efforts to update our information, neither Carter Jonas nor anyone in its employment or acting on its behalf makes any representations warranties or guarantees, whether express or implied, in relation to the property, or that the content in these particulars is accurate, complete or up to date. Our images only represent part of the property as it appeared at the time they were taken and do not represent the furnishings included, these are confirmed in a separate inventory. If you require further information please contact us.

\*Administration fees may apply depending on tenancy type. Please contact your local branch for this information.