



**ASHBURN GARDENS, SOUTH KENSINGTON, SW7**  
£636.00 per week\*

**Carter Jonas**

# **ASHBURN GARDENS, SOUTH KENSINGTON, LONDON, UK, SW7**

A newly refurbished two double bedroom apartment on the 5th floor (with lift) of a period conversion in South Kensington. The Energy Efficiency Rating is Band C.

## **THE PROPERTY**

Property comprises a bright and spacious reception room with modern semi open plan fully fitted kitchen. Tiled bathroom with bath and overhead shower. There are two double bedrooms at the rear of the flat both with built in storage.

An up market part of prime central London north of Chelsea and borders Hyde Park on the north side. Popular with students as well as young professionals. Serviced by South Kensington and Gloucester Road tube.





---

## ADDITIONAL INFORMATION

Offers	Available for a minimum term of 12 months longer terms will be considered
--------	---

Viewing	Strictly by appointment
---------	-------------------------

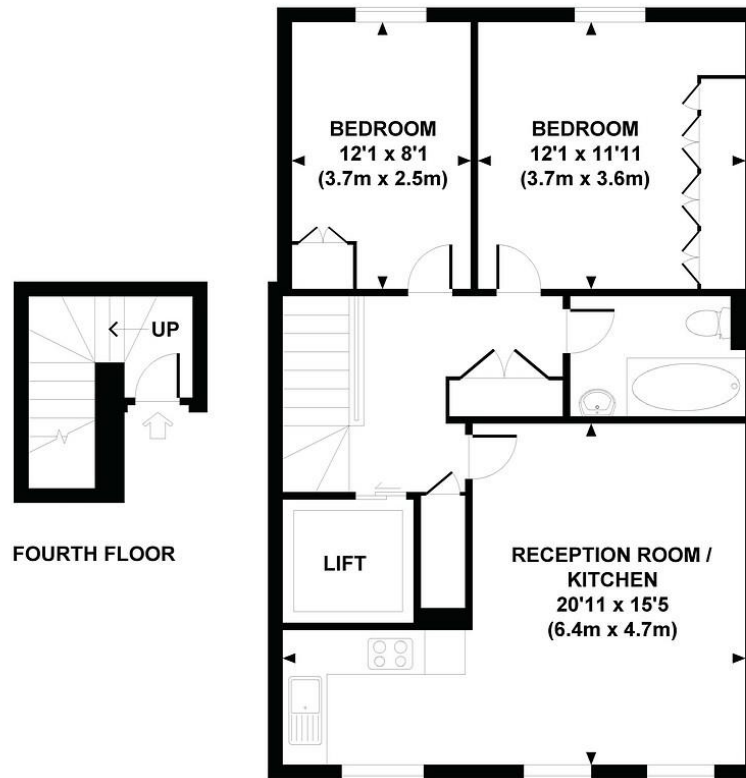
Local Authority	- Council Tax Band
-----------------	--------------------

---



## ASHBURN GARDENS, SW7

Approx. gross internal area  
743 Sq.Ft. / 69 Sq.M.



All measurements are approximate and for illustration purposes only as defined by the RICS Code of Measuring Practice © 2012  
Dowling Jones Design www.dowlingjones.com 020 7610 9933



**T: 020 7584 7020**

47 Beauchamp Place, London, SW3 1NX

E: [chelsea@carterjonas.co.uk](mailto:chelsea@carterjonas.co.uk)

**[carterjonas.co.uk](http://carterjonas.co.uk)**

Offices throughout the UK



### IMPORTANT INFORMATION

Our property particulars do not represent an offer or contract, or part of one. The information given is without responsibility on the part of the agents, seller(s) or lessor(s) and you should not rely on the information as being factually accurate about the property, its condition or its value. Neither Carter Jonas LLP nor anyone in its employment or acting on its behalf has authority to make any representation or warranty in relation to this property. We have not carried out a detailed survey, nor tested the services, appliances or fittings at the property. The images shown may only represent part of the property and are as they appeared at the time of being photographed. The areas, measurements and distances are approximate only. Any reference to alterations or use does not mean that any necessary planning permission, building regulation or other consent has been obtained. The VAT position relating to the property may change without notice.