



EARLS COURT SQUARE, EARLS COURT, SW5
£750 per week*

Carter Jonas

EARLS COURT SQUARE, EARLS COURT, SW5

A bright and well presented, modern two bedroom flat (c.690 sq ft) situated on the fifth floor - without lift - of this period building in Earls Court Square that runs west off Earls Court Road. EPC rating: E

This is a super pied-a-terre in the heart of Earls Court, close to the extensive amenities of the area offering easy access around London and beyond.

Reception, kitchen, 2 double bedrooms, bathroom. Furnished.

Access to communal gardens by separate negotiation.

Minimum term is 12 months

Holding deposit is 1 week's rent

Security deposit is 5 week's rent

Royal Borough of Kensington & Chelsea

Council tax band: F

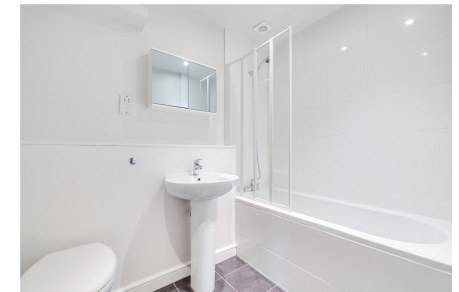
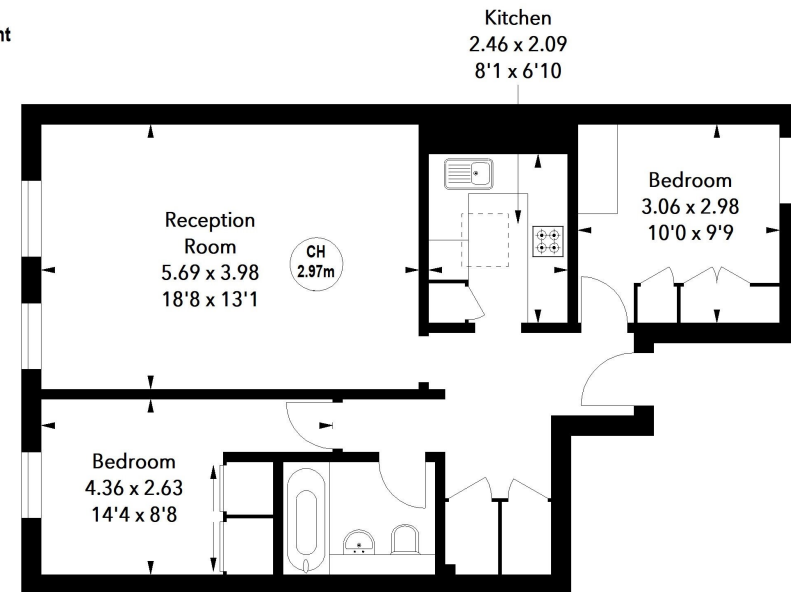
- Council Tax Band = F
- EPC = E
- Deposit Required = £3,750.00
- Long Let, Minimum term 12 months

Energy Efficiency Rating		
	Current	Potential
Very energy efficient - lower running costs		
(92-100) A		
(81-91) B		
(69-80) C		
(55-68) D		
(39-54) E	48	67
(21-38) F		
(1-20) G		
Not energy efficient - higher running costs		
England, Scotland & Wales EU Directive 2002/91/EC		

Earls Court Square, SW5

Approximate Area = 64.47 sq m / 694 sq ft

Key :
CH - Ceiling Height



South Kensington & Knightsbridge Letting 020 7584 7020

chelsea@carterjonas.co.uk

25-27 Harrington Road, London, SW7 3EU



Exclusive UK affiliate of

CHRISTIE'S
INTERNATIONAL REAL ESTATE

Classification L2 - Business Data

IMPORTANT INFORMATION

These particulars are for general information purposes only and do not represent an offer of contract or part of one. Carter Jonas has made every attempt to ensure that the particulars and other information provided are as accurate as possible and are not intended to amount to advice on which you should rely as being factually accurate. You should not assume that the property has all necessary planning, building regulations or other consents and Carter Jonas have not tested any services, facilities or equipment. Any measurements and distances given are approximate only. Where Carter Jonas have been provided with a floorplan by a third party, we can not guarantee that the floorplan has been measured in accordance with IPMS. Purchasers or prospective tenants must satisfy themselves of all of the aforementioned by independent inspection or otherwise. Although we make reasonable efforts to update our information, neither Carter Jonas nor anyone in its employment or acting on its behalf makes any representations warranties or guarantees, whether express or implied, in relation to the property, or that the content in these particulars is accurate, complete or up to date. Our images only represent part of the property as it appeared at the time they were taken and do not represent the furnishings included, these are confirmed in a separate inventory. If you require further information please contact us.

* Administration fees may apply depending on tenancy type. Please contact your local branch for this information.