



**PRINCE CONSORT ROAD, SOUTH KENSINGTON, SW7**  
£2,595 per week\*

**Carter Jonas**

# PRINCE CONSORT ROAD, SW7

An exceptional two bedroom, two bathroom mansion flat in a beautifully maintained period building with 24 hour concierge surrounded by some of the finest buildings of historical, cultural and architectural significance in London such as the Royal Albert Hall and the Royal College of Music. The flat benefits from a high specification finish that has been sympathetically integrated with the magnificent period features. EPC rating: C

Albert Court is situated in South Kensington moments away from the green spaces of Hyde Park & Kensington Gardens with easy access to the diverse and extensive amenities of the immediate area and High St Kensington and Knightsbridge close by as well.

Reception, fully fitted kitchen with dining area, 2 double bedrooms, en-suite shower room, bathroom with separate shower, cloakroom. 24 hour concierge in the main building. Furnished.

Minimum term is 12 months

Holding deposit is 2 week's rent

Security deposit is 6 week's rent

Westminster City Council

Council tax band: H

For the latest information on broadband and mobile coverage, please visit <https://checker.ofcom.org.uk/en-gb/broadband-coverage>.

For eligibility for resident parking permits, please refer to the <https://www.rbkc.gov.uk/parking-transport-and-streets/visitor-parking-and-pay-phone/guide-parking> website for further details.

Energy Efficiency Rating		
	Current	Potential
Very energy efficient - lower running costs		
(92-100) A		
(81-91) B		
(69-80) C		
(55-68) D		
(39-54) E		
(21-38) F		
(1-20) G		
Not energy efficient - higher running costs		
England, Scotland & Wales	EU Directive 2002/91/EC	



---

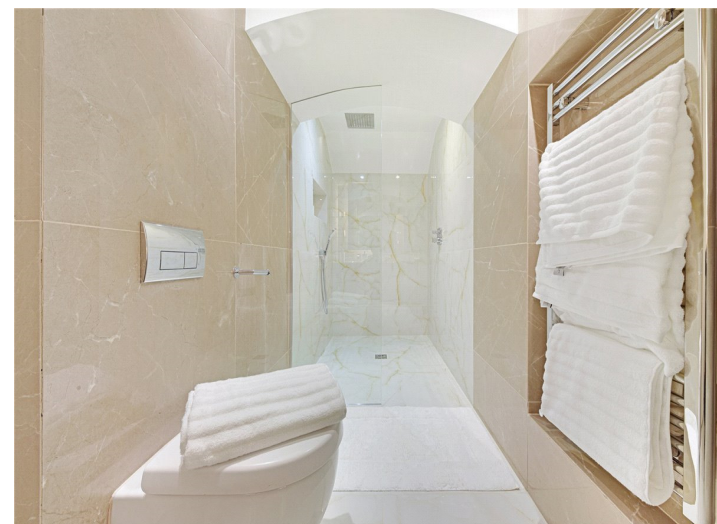
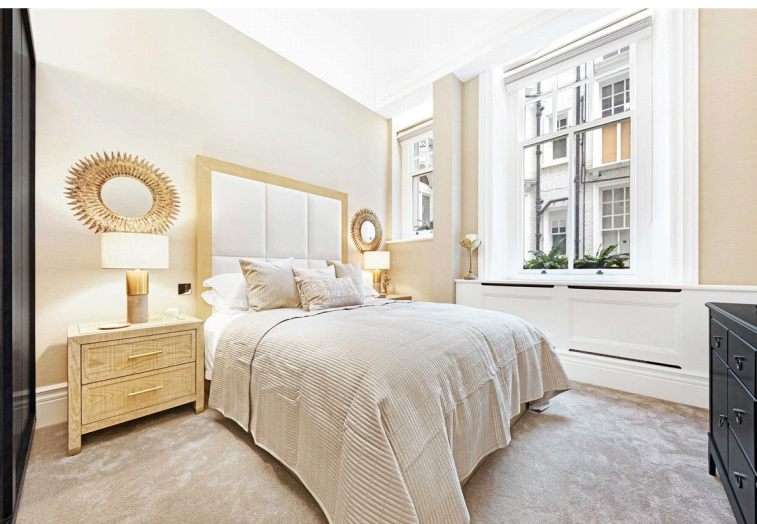
## ADDITIONAL INFORMATION

Offers	Available for a minimum term of 12 months longer terms will be considered
--------	---

Viewing	Strictly by appointment
---------	-------------------------

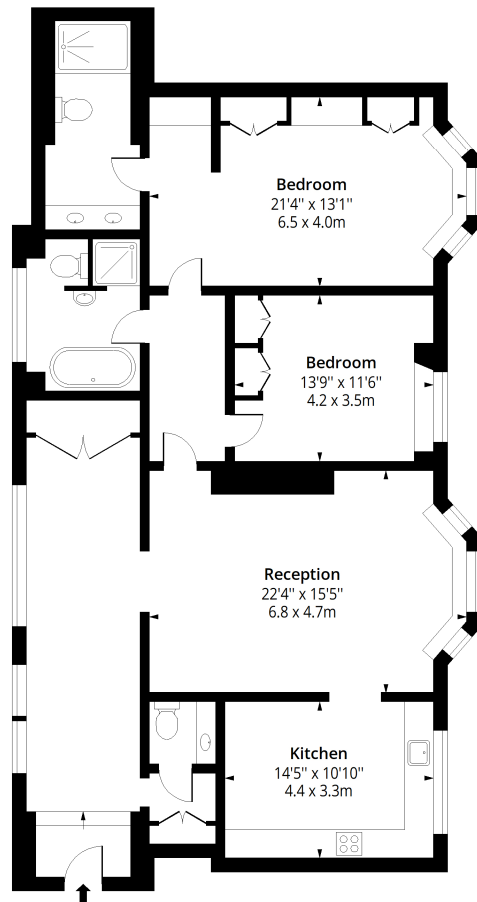
Local Authority	Westminster - Council Tax Band H
-----------------	----------------------------------

---



## Albert Court, SW7

Approx. Gross Internal Area 1549 Sq Ft - 143.90 Sq M



### Ground Floor

Floor Area 1549 Sq Ft - 143.90 Sq M



Measured according to RICS IPMS2. Floor plan is for illustrative purposes only and is not to scale. Every attempt has been made to ensure the accuracy of the floor plan shown, however all measurements, fixtures, fittings and data shown are an approximate interpretation for illustrative purposes only. 1 sq m = 10.76 sq feet.

lpaplus.com

Date: 17/4/2024



T: 020 7584 7020

25-27 Harrington Road, London, SW7 3EU

E: chelsea@carterjonas.co.uk



Exclusive UK affiliate of

**CHRISTIE'S**  
INTERNATIONAL REAL ESTATE

Classification L2 - Business Data

### IMPORTANT INFORMATION

These particulars are for general information purposes only and do not represent an offer or contract or part of one. Carter Jonas or anyone in their employment has made every attempt to ensure that the particulars and other information provided are as accurate as possible and they are not intended to amount to advice on which you should rely as being factually accurate. Full information which may be relevant to your decision regarding the property can be found on the property listing on [carterjonas.co.uk](http://carterjonas.co.uk) or a separately available material information sheet, and we would advise you to confirm the details of any material information prior to any offer being submitted. You should not assume that the property has all necessary planning, building regulations or other consents and Carter Jonas has not tested any services, facilities, or equipment. Any measurements and distances given are approximate only. Where Carter Jonas has been provided with a floorplan by a third party, we cannot guarantee that the floorplan has been measured in accordance with IPMS. Purchasers or prospective tenants must satisfy themselves of all of the aforementioned by independent inspection or otherwise. Our images only represent part of the property as it appeared at the time they were taken and do not represent the furnishings included; these are confirmed in a separate inventory. If you require further information, please contact us. \*Administration fees may apply depending on tenancy type. Please contact your local branch for this information.