



**130 HIGH ST**  
Bildeston, Suffolk

Carter Jonas

## 130 HIGH ST, BILDESTON, SUFFOLK, IP7 7ED

- Hadleigh 5 miles
- Lavenham 6 miles
- Stowmarket 8 miles (London Liverpool Street 80 minutes)
- Manningtree 14 miles (London Liverpool Street 55 minutes)

Entrance hall • Sitting/dining room • Snug • Kitchen/breakfast room • Utily • 3 large double bedrooms 2 ensuites • Rear gardens • Parking • Village location

### DESCRIPTION

130 High Street is a delightful Grade II listed Georgian fronted house forming part of the attractive High Street scene. Although the house façade is early 18th Century, the house internally predates this with exposed timbers, fireplaces, and other original features. The property comprises: an entrance hall spanning the depth of the house, a captivating sitting/dining room with a large inglenook fireplace, impressive tall ceilings, and linking well with the large kitchen/breakfast room to the rear, which has the outlook over the courtyard gardens. An additional utility room and further snug is found on the ground floor. Upstairs, offers 3 good sized double bedrooms two benefitting from ensuites and a further family shower room.

### OUTSIDE

A shared drive leads to the gravelled parking area, offering a rear entrance, through an initial courtyard garden. Beyond is a delightful garden which is principally laid to lawn and offers the feeling of space and quiet, in contrast to the High St scene the property occupies.

**A CHARMING 3 BEDROOM GRADE II LISTED COTTAGE, DATING BACK TO THE 17TH CENTURY, WITH SPACIOUS ACCOMMODATION SPANNING OVER 2,500 SQ FT, BEAUTIFUL REAR GARDENS, OFF-ROAD PARKING, ALL SET IN THE POPULAR VILLAGE OF BILDESTON.**



## LOCATION

Bildeston is an attractive village with sought after day-to-day shopping facilities, village inns including the very well regarded 'Crown', a doctors' surgery and primary school. There is a village hall, bowling green, playing fields and tennis courts. The village lies approximately 5 miles to the north of Hadleigh, 8 miles from Stowmarket, 14 miles from Ipswich and 18 miles from Bury St Edmunds. Colchester is about 30 minutes by road. There is access to mainline trains from Ipswich, Manningtree and Colchester, the last mentioned with services to Liverpool Street taking about 48 minutes.

## ADDITIONAL INFORMATION

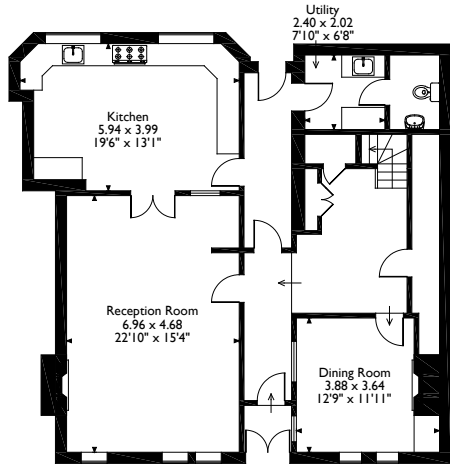
**Tenure:** Freehold

**Services:** Mains water, electrics & calor gas central heating.

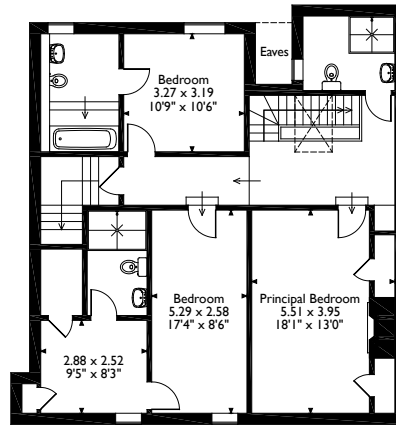
**Local Authority:** Babergh District Council



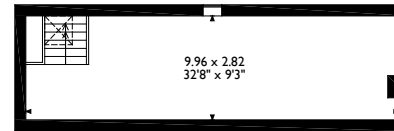
**130 High Street Bildeston, Suffolk**  
**Approximate Gross Internal Area**  
**240 Sq M/2583 Sq Ft**



**Ground Floor**



**First Floor**



**Second Floor**

Please note that the location of doors, windows and other items are approximate and this floorplan is to be used for illustrative purposes only. Unauthorized reproduction is prohibited.



**Long Melford 01787 882881**

suffolk@carterjonas.co.uk

Little St Mary's, Long Melford, CO10 9LQ

**carterjonas.co.uk**

Offices throughout the UK

*Exclusive UK affiliate of*

**CHRISTIE'S**  
**INTERNATIONAL REAL ESTATE**

**IMPORTANT INFORMATION**

These particulars are for general information purposes only and do not represent an offer of contract or part of one. Carter Jonas has made every attempt to ensure that the particulars and other information provided are as accurate as possible and are not intended to amount to advice on which you should rely as being factually accurate. You should not assume that the property has all necessary planning, building regulations or other consents and Carter Jonas have not tested any services, facilities or equipment. Any measurements and distances given are approximate only. Purchasers must satisfy themselves of all of the aforementioned by independent inspection or otherwise. Although we make reasonable efforts to update our information, neither Carter Jonas LLP nor anyone in its employment or acting on its behalf makes any representations warranties or guarantees, whether express or implied, in relation to the property, or that the content in these particulars is accurate, complete or up to date. Our images only represent part of the property as it appeared at the time they were taken. If you require further information please contact us.