



7 PARK TERRACE
Long Melford, Suffolk

Carter Jonas

7 PARK TERRACE, LITTLE ST MARY'S, LONG MELFORD, SUFFOLK, CO10 9LG

- Sudbury 2 miles (London Liverpool Street from 78 minutes)
- Lavenham 4 miles
- Bury St Edmunds 10 miles

Mid Terraced Victorian Cottage • Grade II Listed • Entrance Porch • Sitting Room • Kitchen/breakfast Room • Lean to • 2 Bedrooms • Family Bathroom • Garden • Countryside views

DESCRIPTION

7 Park Terrace is a charming Grade II listed flint pebbled house with red brick dressings which has been recently refurbished to provide a well presented home.

The entrance lobby allow access to a front sitting room with a fireplace with log burner, built in storage area with shelving and cupboard area below. Leading through to the shaker style kitchen/breakfast room with brick flooring, which has an integrated cooker, space for appliances and with ample worktop space and shelving and built in storage for a washing machine and the boiler. This room opens out into to a useful lean to and beyond into the rear garden and beautiful views of the Meadow beyond.

Upstairs offers a large principal double bedroom with built in storage, a further bedroom to the rear of the property with built in storage, currently used as a nursery and a family bathroom.

To the front is a walled terraced garden and entrance. To the rear is the West facing garden, which is predominately laid lawn, with a shingle seating area to the rear, this garden is a sun trap and boasts the most spectacular views of the Long Melford Water meadows, often seen with cows.

A DELIGHTFUL AND SPACIOUS GRADE II LISTED VICTORIAN COTTAGE SET IN A POPULAR VILLAGE LOCATION WITH DELIGHTFUL VIEWS OVER LISTON WATER MEADOWS.

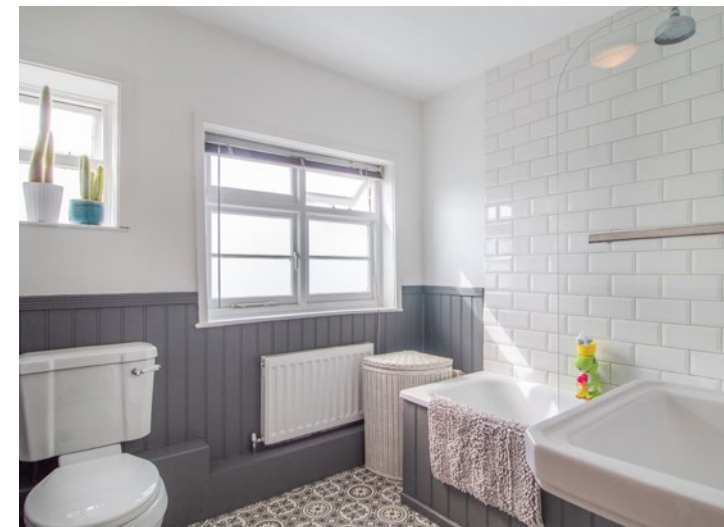


LOCATION

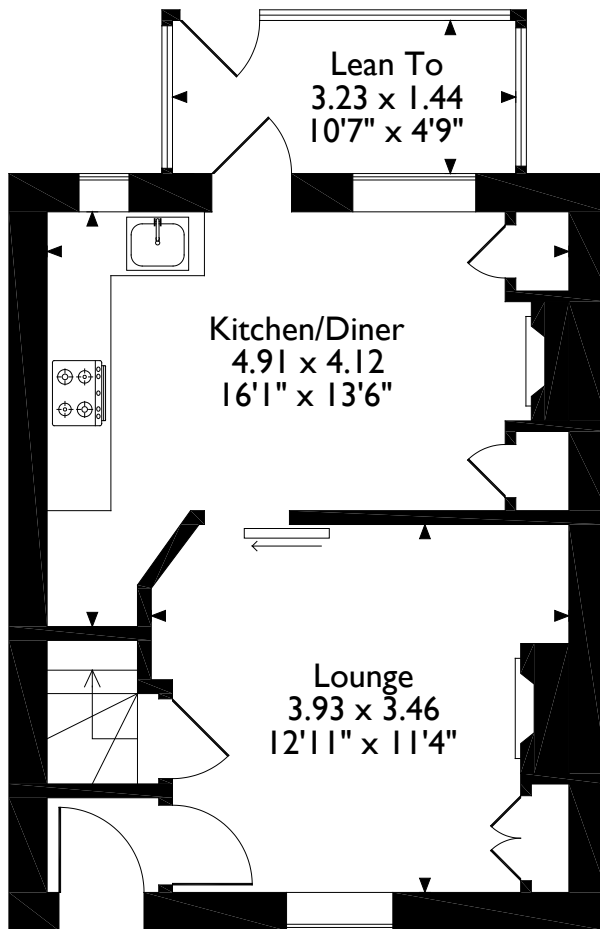
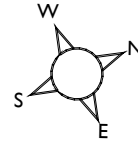
Long Melford is frequently voted amongst the top 20 most sought-after villages in England and Wales. There is an excellent range of shops, restaurants, pubs, doctors' surgery, a primary school, hotels and two Tudor mansions - Kentwell Hall and Melford Hall - both of which are open to the public. The market town of Sudbury (2 miles) provides a rail link to London's Liverpool Street via Marks Tey (about 80 minutes). Alternatively, there is a mainline service from Colchester with fastest trains taking about 48 minutes. The historic market town of Bury St Edmunds lies 10 miles to the north.

ADDITIONAL INFORMATION

Tenure: Freehold
Services: Mains water, electricity, gas and drainage
Local Authority: Babergh Mid Suffolk
Council Tax: Band B
Viewings: By appointment with Carter Jonas
T: 01787 882881
What3Words: ///slyly.geology.proposes

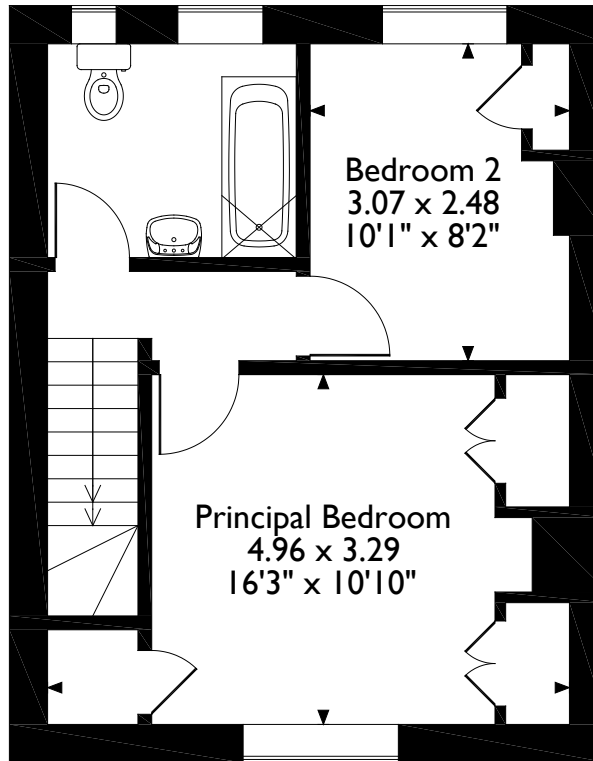


7 Park Terrace, LittleSt. Marys Long Melford, Sudbury, Suffolk
Approximate Gross Internal Area
62 Sq M/668 Sq Ft



Ground Floor

Please note that the location of doors, windows and other items are approximate and this floorplan is to be used for illustrative



First Floor



Long Melford 01787 882881

suffolk@carterjonas.co.uk

Little St Mary's, Long Melford, Suffolk, CO10 9LQ

carterjonas.co.uk

Offices throughout the UK

Exclusive UK affiliate of

CHRISTIE'S
INTERNATIONAL REAL ESTATE

IMPORTANT INFORMATION

These particulars are for general information purposes only and do not represent an offer of contract or part of one. Carter Jonas has made every attempt to ensure that the particulars and other information provided are as accurate as possible and are not intended to amount to advice on which you should rely as being factually accurate. You should not assume that the property has all necessary planning, building regulations or other consents and Carter Jonas have not tested any services, facilities or equipment. Any measurements and distances given are approximate only. Purchasers must satisfy themselves of all of the aforementioned by independent inspection or otherwise. Although we make reasonable efforts to update our information, neither Carter Jonas LLP nor anyone in its employment or acting on its behalf makes any representations warranties or guarantees, whether express or implied, in relation to the property, or that the content in these particulars is accurate, complete or up to date. Our images only represent part of the property as it appeared at the time they were taken. If you require further information please contact us.