



3 HASELLS COURTYARD
Long Melford, Suffolk

Carter Jonas

3 HASELLS COURTYARD, WESTGATE STREET, LONG MELFORD, SUFFOLK, CO10 9DRE

- Sudbury 2 Mile (London Liverpool Street from 80 minutes)
- Lavenham 4 Miles
- Colchester 16 Miles (London Liverpool Street from 48 minutes)
- Bury St Edmunds 10 Miles

9 Cottage over 55 development • Within walking distance of the centre of Long Melford • Communal Gardens • Entrance porch • Sitting room • Dining room • Kitchen • Downstairs shower room • 3 Bedrooms • Bathroom • Small mature garden patio space • Single Garage • Visitor parking

DESCRIPTION

Hasells Courtyard comprises of a small cluster of cottages around a central lawn with pretty flowerbeds. The buildings are in a traditional Suffolk style, with finely-detailed brick, rendered elevations and pantile roofs. Number 3 is the larger of the properties on this development, being formally built for "The Warden" offering 3 bedrooms, one currently used as a study, a spacious sitting room leading through into the dining area, kitchen and downstairs shower room.

OUTSIDE

This small complex offers maintained communal gardens for all to enjoy. The cottage also benefits from a small patio area with patio garden surrounded by mature shrubs and trees and a single garage. Additional visitor car parking space is available.

3 HASELLS COURTYARD IS PART OF THE PRESTIGIOUS DEVELOPMENT OF JUST 9 OVER 55'S COTTAGES ORIGINALLY BUILT IN 1983



LOCATION

Long Melford is frequently voted amongst the top 20 most sought-after villages in England and Wales. There is an excellent range of shops, restaurants, pubs, doctors' surgery, a primary school, hotels and two Tudor mansions - Kentwell Hall and Melford Hall - both of which are open to the public. The market town of Sudbury (2 miles) provides a rail link to London's Liverpool Street via Marks Tey (about 80 minutes). Alternatively, there is a mainline service from Colchester with fastest trains taking about 48 minutes. The historic market town of Bury St Edmunds lies 10 miles to the north.

ADDITIONAL INFORMATION

Tenure: Leasehold

Services: Mains electric, water and drainage

Local Authority: Babergh Mid Suffolk

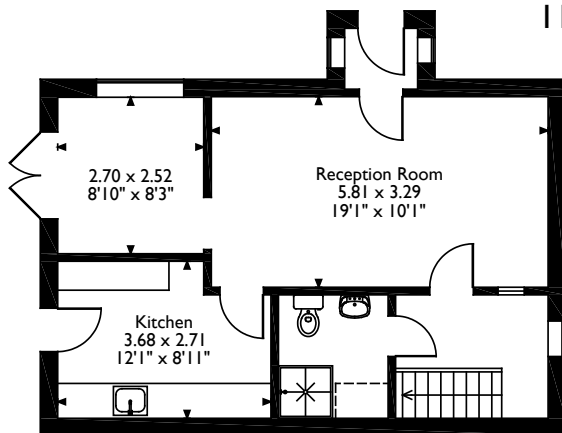
Council Tax: Band E

Viewings: By appointment with Carter Jonas
T: 01787 882881

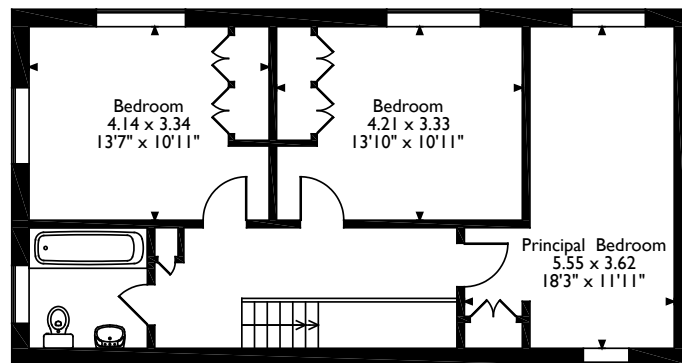
What3Words: ///dame.crows.speedily



3 Hasells Courtyard, Westgate Street Long Melford, Sudbury, Suffolk
Approximate Gross Internal Area
110 Sq M / 1184 Sq Ft



Ground Floor



First Floor

Please note that the location of doors, windows and other items are approximate and this floorplan is to be used for illustrative purposes only. Unauthorized reproduction is prohibited.



Long Melford 01787 882 881

suffolk@carterjonas.co.uk

Little St Mary's, Long Melford, Suffolk CO10 9LG

carterjonas.co.uk

Offices throughout the UK

Exclusive UK affiliate of

CHRISTIE'S
INTERNATIONAL REAL ESTATE

IMPORTANT INFORMATION

These particulars are for general information purposes only and do not represent an offer of contract or part of one. Carter Jonas has made every attempt to ensure that the particulars and other information provided are as accurate as possible and are not intended to amount to advice on which you should rely as being factually accurate. You should not assume that the property has all necessary planning, building regulations or other consents and Carter Jonas have not tested any services, facilities or equipment. Any measurements and distances given are approximate only. Purchasers must satisfy themselves of all of the aforementioned by independent inspection or otherwise. Although we make reasonable efforts to update our information, neither Carter Jonas LLP nor anyone in its employment or acting on its behalf makes any representations warranties or guarantees, whether express or implied, in relation to the property, or that the content in these particulars is accurate, complete or up to date. Our images only represent part of the property as it appeared at the time they were taken. If you require further information please contact us.