



HERDS PASTURE

Old Barn Road, Mount Bures, Essex

Carter Jonas

HERDS PASTURE, OLD BARN ROAD, MOUNT BURES, BURES, ESSEX, CO8 5AH

Bures – 1 mile
Sudbury – 7 miles
Colchester – 8 miles
Ipswich – 22 miles

'High-status' jettied timber frame • Host of fine period features • Mullion and leaded windows • Fine inglenook fireplace • Wealth of exposed timbers • Generous ceiling heights • Grounds of approximately 3.67 acres • Substantial detached barn • Tremendous scope for remodelling and updating • Wonderful far reaching countryside views.

DESCRIPTION

Justifiably listed Grade II as being of architectural or historical interest, Herds Pasture is a wonderful example of historic vernacular architecture, with origins reputed to date back to the 14th/15th Century as an 'open hall' benefiting from a later high-status 17th Century jettied cross-wing demonstrating and displaying the wealth and status of the original owner. Of original timber frame construction with rendered and colour washed elevations under a pitched and hipped gablet peg tiled roofline, the house has been significantly extended in more recent years to provide generous and flexible accommodation retaining a host of original characteristics including a wealth of exposed timbers, lead-light windows and fine open fireplaces.

AN HISTORIC MEDIEVAL COUNTRY HOUSE REQUIRING ELEMENTS OF UPDATING, STANDING IN SECLUDED GROUNDS IN EXCESS OF 3.5 ACRES INCLUDING FORMAL GARDENS AND WOODLAND AND ENJOYING WONDERFUL FAR-REACHING VIEWS







In common with properties which have remained in the same family ownership for many decades, today, various aspect of the accommodation are undoubtedly 'somewhat dated' by modern standards and the house would benefit from updating and refurbishment with possibly the kitchen being relocated to the position of the current garage and further reconfiguration.

OUTSIDE

Irrespective of the investment made in refurbishment of the house, it would be nigh impossible to make Herds Pasture too good for the setting and location the property enjoys. Standing in grounds in excess of 3.5 acres comprising formal gardens and woodland and with no immediate neighbours, the position affords the occupants a superb degree of privacy together with wonderful far-reaching views to the rear over undulating countryside and woodland beyond. Accessed via a spur from the main driveway, a relatively modern detached barn sits in rear corner of the grounds providing excellent storage, workshop, or subject to the relevant planning consents, outstanding scope to be converted into ancillary annexe accommodation.



LOCATION

Located on top of the hill Mount Bures is approximately a mile south of the historic village of Bures. Sitting on the Suffolk/Essex border, Bures St Mary and the neighbouring Bures Hamlet (divided by the river Stour) have a thriving community and are well served by a good range of everyday amenities including village stores, post office, historic village inns and the magnificent parish Church of St Mary. The village further benefits from a rail link via Marks Tey to London's Liverpool Street.

ADDITIONAL INFORMATION

Tenure: Freehold

Services: It is understood that mains electricity and water are connected. Drainage via private system. Oil fired central heating to radiators.

Local Authority: Colchester District Council - BAND G

What3Words: ///shining.landowner.character

Viewing: By appointment with Carter Jonas 01787 882881



Herds Pasture, Old Barn Road, Mount Bures, Bures

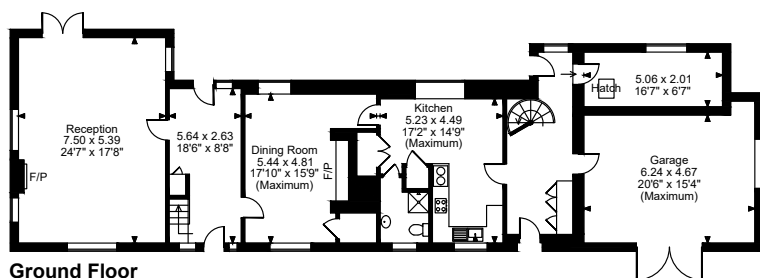
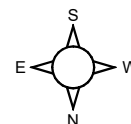
Approximate Gross Internal Area
Main House = 3,295 sq ft / 306 sq m

Garage = 318 sq ft / 30 sq m

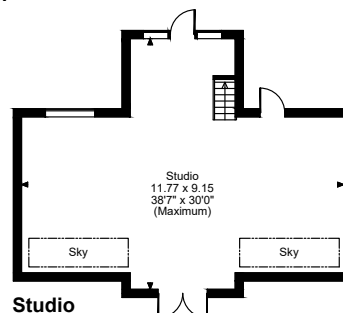
Studio = 974 sq ft / 90 sq m

Shed = 326 sq ft / 30 sq m

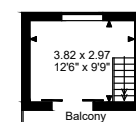
Total = 4,913 sq ft / 456 sq m



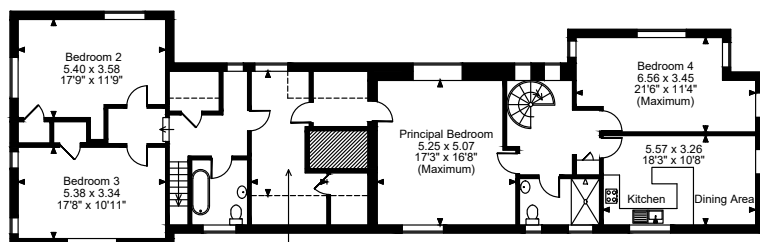
Ground Floor



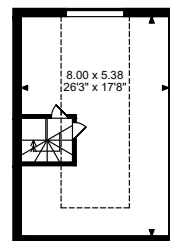
Studio Ground Floor



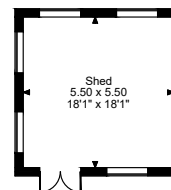
Studio First Floor



First Floor



Loft



FOR ILLUSTRATIVE PURPOSES ONLY - NOT TO SCALE
The position & size of doors, windows, appliances and other features are approximate only.
□ □ □ □ Denotes restricted head height
© ehouse. Unauthorised reproduction prohibited. Drawing ref. dig/8552630/TML



Long Melford 01787 882881

suffolk@carterjonas.co.uk

Little St Mary's, Long Melford, Suffolk

carterjonas.co.uk

Offices throughout the UK

Exclusive UK affiliate of

CHRISTIE'S
INTERNATIONAL REAL ESTATE

IMPORTANT INFORMATION

These particulars are for general information purposes only and do not represent an offer of contract or part of one. Carter Jonas has made every attempt to ensure that the particulars and other information provided are as accurate as possible and are not intended to amount to advice on which you should rely as being factually accurate. You should not assume that the property has all necessary planning, building regulations or other consents and Carter Jonas have not tested any services, facilities or equipment. Any measurements and distances given are approximate only. Purchasers must satisfy themselves of all of the aforementioned by independent inspection or otherwise. Although we make reasonable efforts to update our information, neither Carter Jonas LLP nor anyone in its employment or acting on its behalf makes any representations warranties or guarantees, whether express or implied, in relation to the property, or that the content in these particulars is accurate, complete or up to date. Our images only represent part of the property as it appeared at the time they were taken. If you require further information please contact us.