



GREAT RUSSELL STREET, BLOOMSBURY, WC1B
£4,045 per week*

Carter Jonas

GREAT RUSSELL STREET, BLOOMSBURY, LONDON, WC1B 3BP

A five-bedroom house of approximately 3,693 square feet

- Furnished
- 4 Reception rooms
- 5 Bedrooms
- 4 Bath/shower rooms
- Eat-in kitchen
- Guest cloakroom
- Separate Utility

THE PROPERTY

This Georgian, Grade II listed house in one of the original John Nash terraces, built in the 18th century.

Located in the heart of Bloomsbury with views of the British Museum, the property is set over five floors and has been tastefully designed to combine period elegance with high-spec contemporary features, including a Lutron lighting system, Crestron entertainment system and air-conditioning.

The house offers an abundance of entertaining space with four reception rooms with high ceilings and period features with access to the terrace from the lower ground floor. There is a spacious principal suite located over the second floor benefitting from a walk-in wardrobe and en suite bathroom.

LOCATION

Bloomsbury is quietly nestled to the east of the famous shopping facilities of Oxford Street and is notable for its concentration of academic establishments and formal garden squares. It is home to the British Museum, Great Ormond Street Children's Hospital, Georgian town houses, publishers and delightful cafes and bookshops.

NHA

The deposit will be £24,270 at a rental value of £4,045 per week (asking price)

Holding deposit = 1 weeks rent of £4,045 per week

Deposit is 6 weeks rent (£4,045 per week = £24,270 deposit)

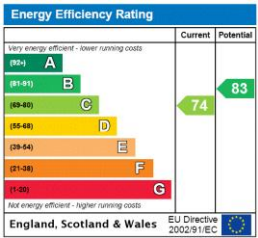
Rent is not payable weekly

Nearest Tube: Holborn



ADDITIONAL INFORMATION

Offers	Available for a minimum term of 12 months longer terms will be considered
Viewing	Strictly by appointment
Local Authority	Camden Council - Council Tax Band H
Utilities	Mains gas and water Ultrafast broadband and mobile coverage available



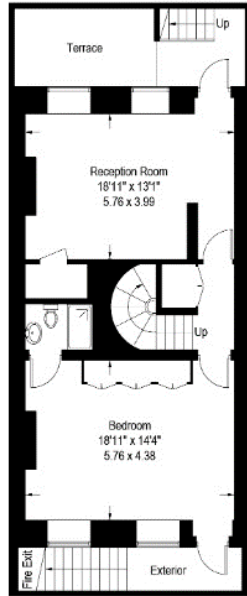
Great Russell Street, WC1B

Approximate Gross Internal Area = 3693 sq ft / 343.1 sq m

Reduced Headroom = 17 sq ft / 1.6 sq m

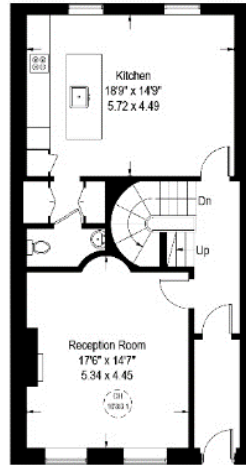
Total = 3710 sq ft / 344.7 sq m

External Area = 226 sq ft / 21.0 sq m

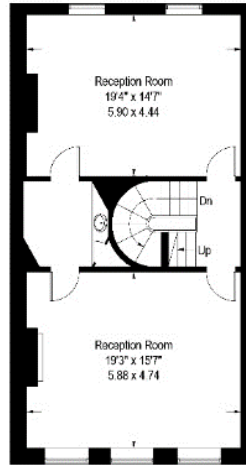


Lower Ground Floor

Reduced headroom below 1.5m / 5'0"



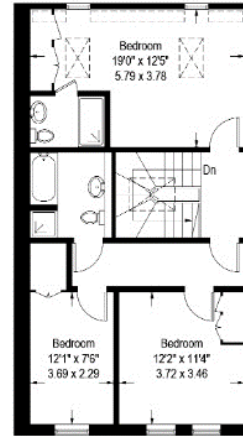
Ground Floor



First Floor



Second Floor



Third Floor



T: 020 7493 0676

18 Davies Street, Mayfair, London, W1K 3DS

E: mayfair@carterjonas.co.uk



Exclusive UK affiliate of

CHRISTIE'S
INTERNATIONAL REAL ESTATE

Classification L2 - Business Data

IMPORTANT INFORMATION

Our property particulars do not represent an offer or contract, or part of one. The information given is without responsibility on the part of the agents, seller(s) or lessor(s) and you should not rely on the information as being factually accurate about the property, its condition or its value. Neither Carter Jonas LLP nor anyone in its employment or acting on its behalf has authority to make any representation or warranty in relation to this property. We have not carried out a detailed survey, nor tested the services, appliances or fittings at the property. The images shown may only represent part of the property and are as they appeared at the time of being photographed. The areas, measurements and distances are approximate only. Where Carter Jonas have been provided with a floorplan by a third party, we can not guarantee that the floorplan has been measured in accordance with IPMS. Any reference to alterations or use does not mean that any necessary planning permission, building regulation or other consent has been obtained. The VAT position relating to the property may change without notice. Administration fees may apply depending on tenancy type. Please contact your local branch for this information.