



**LOWNDES SQUARE, BELGRAVIA, SW1X**  
£1,250 per week\*

**Carter Jonas**



---

# FLAT 1D, LOWNDES SQUARE, BELGRAVIA, LONDON, SW1X 9HA

A two-bedroom apartment of approximately 1,177 square feet

- Furnished
- 2 Bedrooms
- 1 En suite bathroom
- 1 En suite shower room
- 1 Reception room
- 1 Kitchen / dining room

## THE PROPERTY

This newly refurbished, spacious apartment is situated in a smart portered building with lift and located on this prestigious garden square and within walking distance of Hyde Park, Harvey Nichols and Sloane Street.

## LOCATION

Belgravia is located slightly to the east of Knightsbridge and is the chosen location for embassies, international professionals and British alike. Bordered by Sloane Street on the west, Ebury Street to the south, Victoria station to the west and Hyde Park to the north, it is also the location of many of London's top hotels and as such draws varied, wealthy residents and an interesting mix of global visitors and part time inhabitants.

AST

The deposit will be £7,500 at a rental value of £1,250 pw (asking price)

Holding deposit = 1 weeks rent of £1,250

Deposit is 6 weeks rent (£1,250 pw = £7,500 deposit)

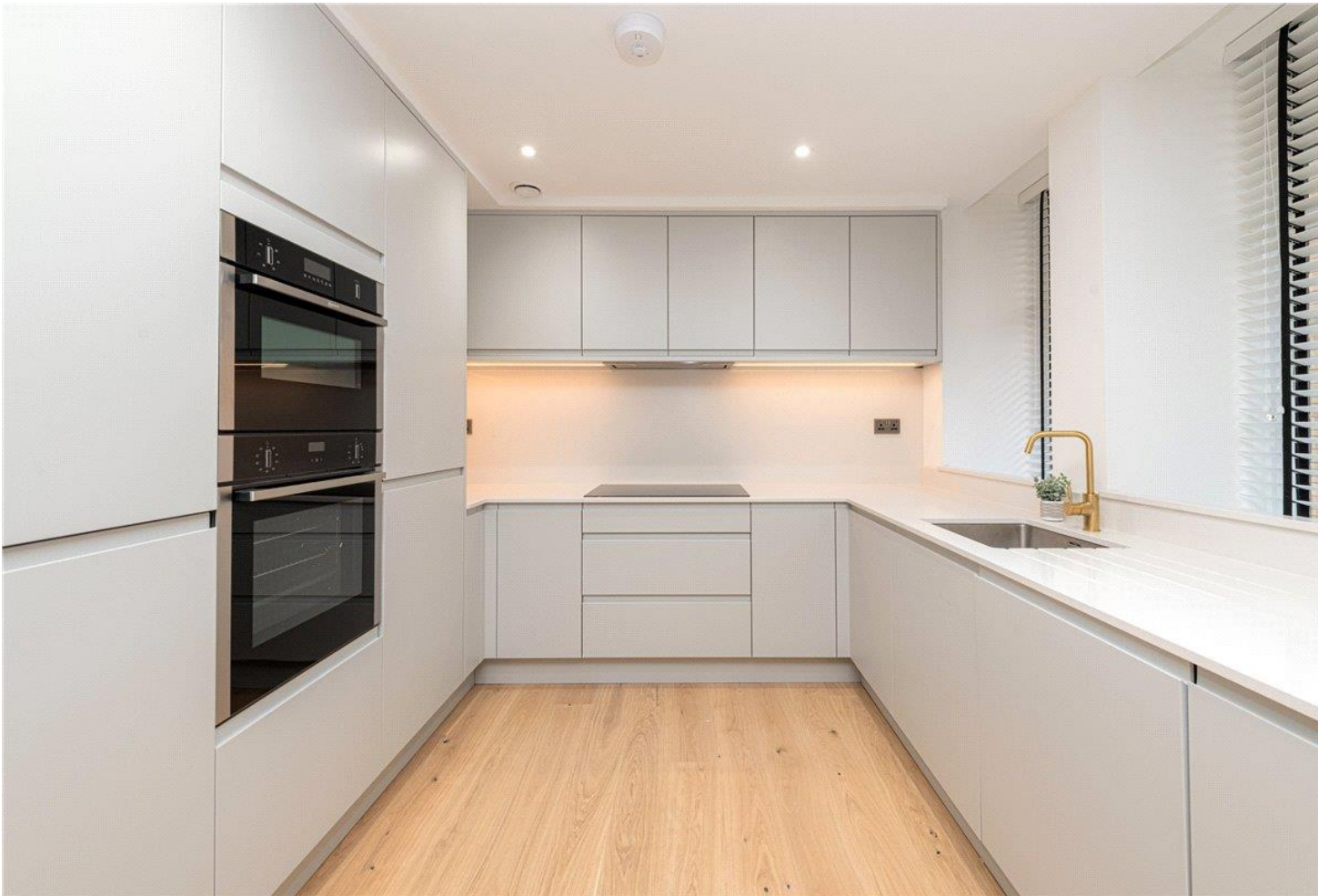
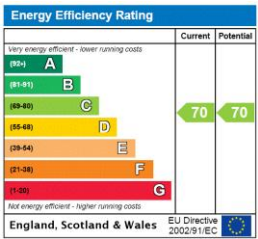
Nearest Tube: Knightsbridge





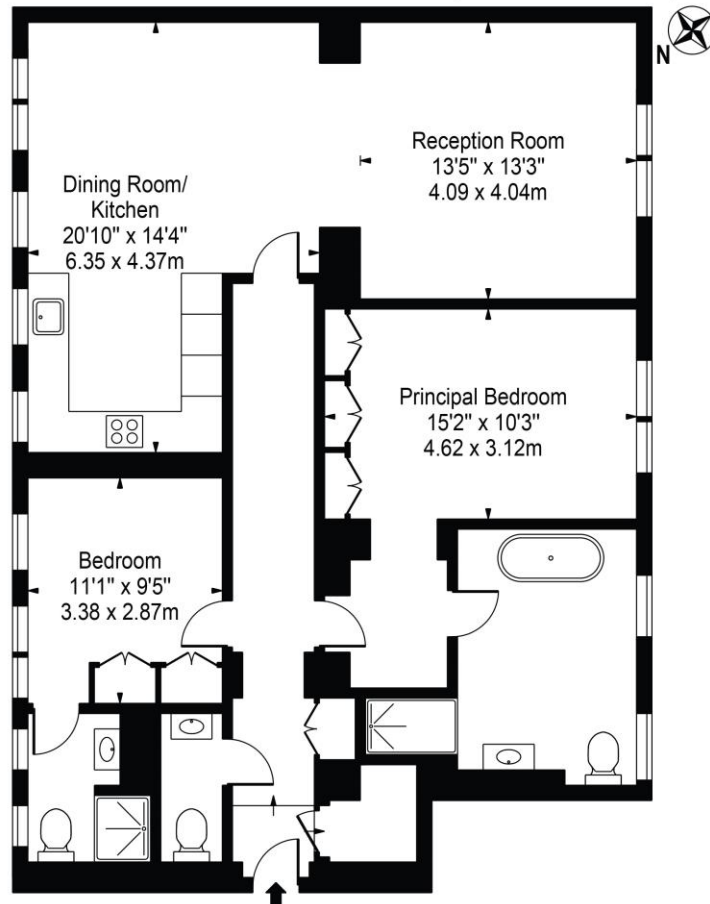
ADDITIONAL INFORMATION

Offers	Available for a minimum term of 12 months longer terms will be considered
Viewing	Strictly by appointment
Local Authority	Westminster County Council - Council Tax Band G
Material Information	Main heating control charging system linked to use of community heating  Communal hot water



# Lowndes Square

Approx. Gross Internal Area 1177 Sq Ft - 109.37 Sq M



## Lower Ground Floor

For Illustration Purposes Only - Not To Scale

This floor plan should be used as a general outline for guidance only and does not constitute in whole or in part an offer or contract. Any intending purchaser or lessee should satisfy themselves by inspection, searches, enquiries and full survey as to the correctness of each statement. Any areas, measurements or distances quoted are approximate and should not be used to value a property or be the basis of any sale or let. Copyright Morriarti Photography & Design LTD



T: 020 7493 0676

18 Davies Street, Mayfair, London, W1K 3DS

E: mayfair@carterjonas.co.uk



Exclusive UK affiliate of

**CHRISTIE'S**  
INTERNATIONAL REAL ESTATE

Classification L2 - Business Data

## IMPORTANT INFORMATION

These particulars are for general information purposes only and do not represent an offer or contract or part of one. Carter Jonas or anyone in their employment has made every attempt to ensure that the particulars and other information provided are as accurate as possible and they are not intended to amount to advice on which you should rely as being factually accurate. Full information which may be relevant to your decision regarding the property can be found on the property listing on [carterjonas.co.uk](http://carterjonas.co.uk) or a separately available material information sheet, and we would advise you to confirm the details of any material information prior to any offer being submitted. You should not assume that the property has all necessary planning, building regulations or other consents and Carter Jonas has not tested any services, facilities, or equipment. Any measurements and distances given are approximate only. Where Carter Jonas has been provided with a floorplan by a third party, we cannot guarantee that the floorplan has been measured in accordance with IPMS. Purchasers or prospective tenants must satisfy themselves of all of the aforementioned by independent inspection or otherwise. Our images only represent part of the property as it appeared at the time they were taken and do not represent the furnishings included; these are confirmed in a separate inventory. If you require further information, please contact us. \*Administration fees may apply depending on tenancy type. Please contact your local branch for this information.