



CURZON STREET, MAYFAIR, W1J
£1,625 per week*

Carter Jonas

CURZON STREET, MAYFAIR, LONDON, W1J 5HG

Interior designed penthouse apartment of approximately 896 square feet

- Penthouse
- 2 Bedrooms
- 2 Bathrooms
- Private Terrace
- Separate balcony
- Lift Access
- Concierge

A beautifully presented apartment situated in this sought after building with concierge. The apartment has been fully furnished to the highest standard throughout, comprising a large double aspect reception room leading to roof terrace, two spacious bedrooms, two bathrooms and a further private balcony accessed via the principal bedroom suite.

Mayfair is London's most fashionable destination. With London's finest buildings, largest concentration of luxury hotels, best restaurants, bars, shopping, open spaces and hidden treasures all nestled together in a beautiful village setting.

Nearest Tube: Bond Street / Marble Arch

NHA

The deposit will be £9,750 at a rental value of £1,625 (asking price)

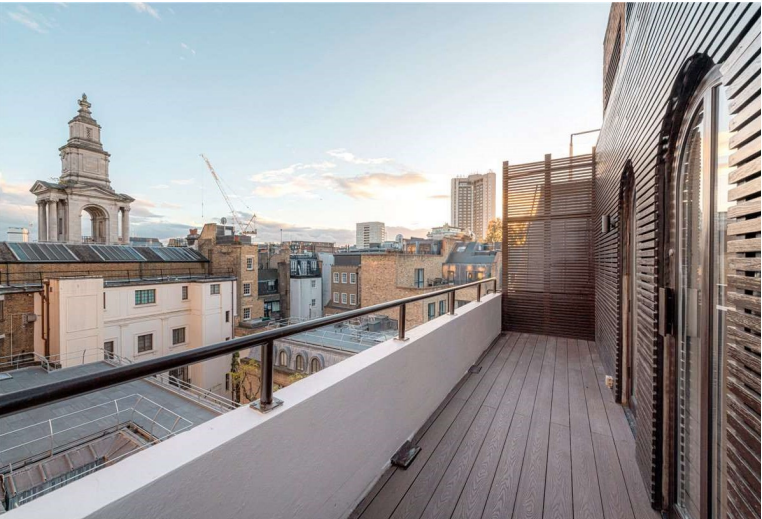
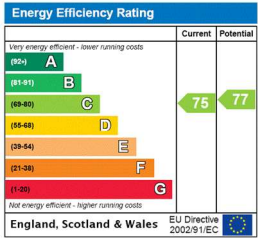
Holding deposit = 1 weeks rent of £1,625

Deposit is 6 weeks rent (£1,625 pw = £9,750 deposit)



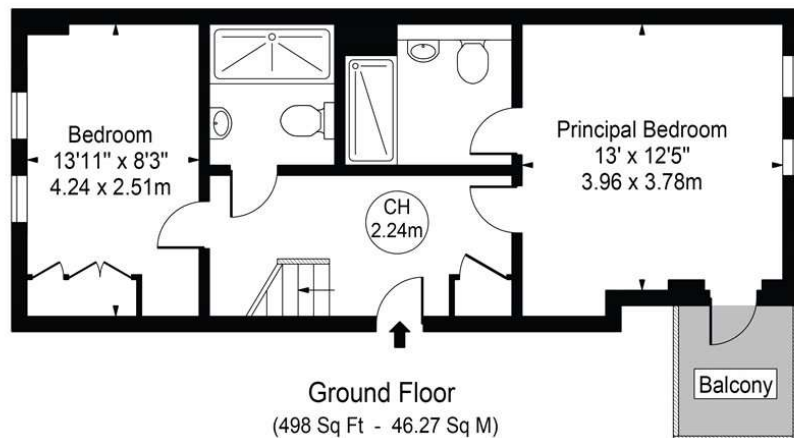
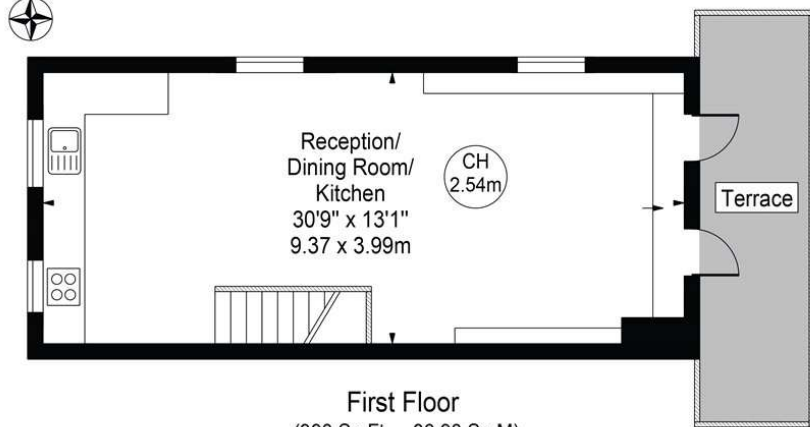
ADDITIONAL INFORMATION

Offers	Available for a minimum term of 12 months longer terms will be considered
Viewing	Strictly by appointment
Local Authority	Westminster City Council - Council Tax Band G



Curzon Street

N Approx. Gross Internal Area 896 Sq Ft - 83.24 Sq M



For Illustration Purposes Only - Not To Scale

This floor plan should be used as a general outline for guidance only and does not constitute in whole or in part an offer or contract. Any intending purchaser or lessee should satisfy themselves by inspection, searches, enquiries and full survey as to the correctness of each statement. Any areas, measurements or distances quoted are approximate and should not be used to value a property or be the basis of any sale or let. Copyright Morriarti Photography & Design LTD



T: 020 7493 0676

18 Davies Street, Mayfair, London, W1K 3DS

E: mayfair@carterjonas.co.uk



Exclusive UK affiliate of

CHRISTIE'S
INTERNATIONAL REAL ESTATE

Classification L2 - Business Data

IMPORTANT INFORMATION

Our property particulars do not represent an offer or contract, or part of one. The information given is without responsibility on the part of the agents, seller(s) or lessor(s) and you should not rely on the information as being factually accurate about the property, its condition or its value. Neither Carter Jonas LLP nor anyone in its employment or acting on its behalf has authority to make any representation or warranty in relation to this property. We have not carried out a detailed survey, nor tested the services, appliances or fittings at the property. The images shown may only represent part of the property and are as they appeared at the time of being photographed. The areas, measurements and distances are approximate only. Where Carter Jonas have been provided with a floorplan by a third party, we can not guarantee that the floorplan has been measured in accordance with IPMS. Any reference to alterations or use does not mean that any necessary planning permission, building regulation or other consent has been obtained. The VAT position relating to the property may change without notice. Administration fees may apply depending on tenancy type. Please contact your local branch for this information.