



ST. MARTIN'S LANE, COVENT GARDEN, WC2N
£2,850 per week*

Carter Jonas

ST. MARTIN'S LANE, COVENT GARDEN, LONDON, WC2N

A triplex apartment of approximately 1,983 square feet

- 3 Bedrooms
- 2 Bathrooms
- Guest WC
- Separate Kitchen
- Period Features

This unique apartment is set over three floors with a spacious reception room with ornate ceilings and separate large kitchen on one level, and bedrooms and bathrooms arranged over the upper levels. There is additional loft storage space along with an abundance of natural light.

Covent Garden is a popular shopping and tourist site located on the fringes of the West End. It is predominantly known for its famous Royal Opera House, home to the Royal Opera and Royal Ballet, central square with street performers, theatres restaurants and elegant buildings.

Nearest Tube: Covent Garden / Leicester Square

NHA

The deposit will be £17,100 at a rental value of £2,850 (asking price)

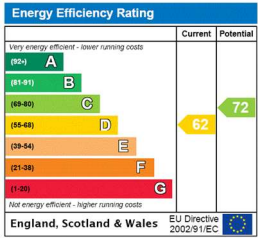
Holding deposit = 1 weeks rent of £2,850

Deposit is 6 weeks rent (£2,850 pw = £17,100 deposit)



ADDITIONAL INFORMATION

Offers	Available for a minimum term of 12 months longer terms will be considered
Viewing	Strictly by appointment
Local Authority	Westminster City Council - Council Tax Band H
Material Information	Boiler and radiators, mains gas Mains water and electricity Ultrafast broadband and mobile coverage available



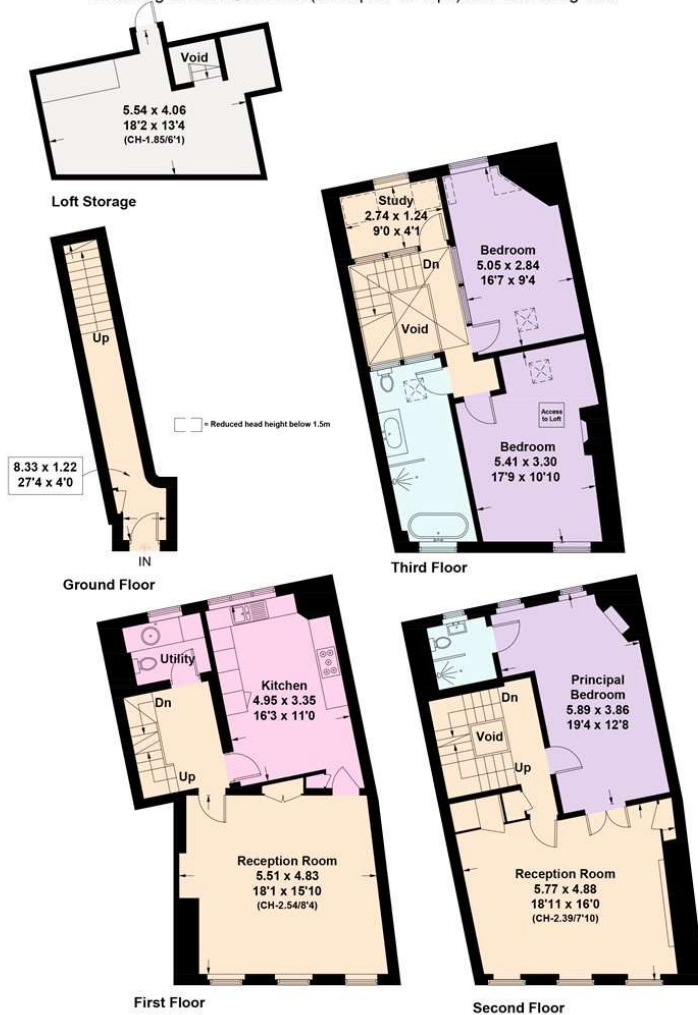
St Martin's Lane, WC2N

Approximate Floor Area = 184.2 sq m / 1983 sq ft

Loft Storage = 19.2 sq m / 207 sq ft

Total = 203.4 sq m / 2190 sq ft

Including Limited Use Area (3.7 sq m / 40 sq ft) And Excluding Void



This plan is for layout guidance only. Not drawn to scale unless stated. Windows and door openings are approximate. Whilst every care is taken in the preparation of this plan, please check all dimensions, shapes and compass bearings before making any decisions reliant upon them. (ID842704)



T: 020 7493 0676

18 Davies Street, Mayfair, London, W1K 3DS

E: mayfair@carterjonas.co.uk



Exclusive UK affiliate of

CHRISTIE'S
INTERNATIONAL REAL ESTATE

Classification L2 - Business Data

IMPORTANT INFORMATION

Our property particulars do not represent an offer or contract, or part of one. The information given is without responsibility on the part of the agents, seller(s) or lessor(s) and you should not rely on the information as being factually accurate about the property, its condition or its value. Neither Carter Jonas LLP nor anyone in its employment or acting on its behalf has authority to make any representation or warranty in relation to this property. We have not carried out a detailed survey, nor tested the services, appliances or fittings at the property. The images shown may only represent part of the property and are as they appeared at the time of being photographed. The areas, measurements and distances are approximate only. Where Carter Jonas have been provided with a floorplan by a third party, we can not guarantee that the floorplan has been measured in accordance with IPMS. Any reference to alterations or use does not mean that any necessary planning permission, building regulation or other consent has been obtained. The VAT position relating to the property may change without notice. Administration fees may apply depending on tenancy type. Please contact your local branch for this information.