



**CHESTERFIELD GARDENS, MAYFAIR, W1J**  
£1,250 per week\*

**Carter Jonas**



---

# CHESTERFIELD HOUSE, CHESTERFIELD GARDENS, MAYFAIR, LONDON, W1J 5JY

A two-bedroom apartment of approximately 1,143 square feet

- Long let, minimum term 12 months
- Furnished
- 2 Bedrooms
- 2 Bathrooms
- Separate Kitchen
- Double Reception

## THE PROPERTY

A spacious lateral apartment situated on the fifth floor of a well-kept period building with lift and porter ideally located within walking distance of Hyde Park, transport links and the facilities of Shepherd Market

Recently redecorated and presented to a high standard, the property is available on a furnished basis.

## LOCATION

Mayfair is London's most fashionable destination. With London's finest buildings, largest concentration of luxury hotels, best restaurants, bars, shopping, open spaces and hidden treasures all nestled together in a beautiful village setting.

Nearest Tube: Green Park / Hyde Park Corner.

AST

The deposit will be £7,500 at a rental value of £1,250 (asking price)

Holding deposit = 1 weeks rent of £1,250

Rent is not payable weekly

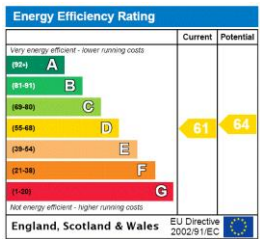
Deposit is 5 weeks rent (£1,250 pw = £7,500 deposit)





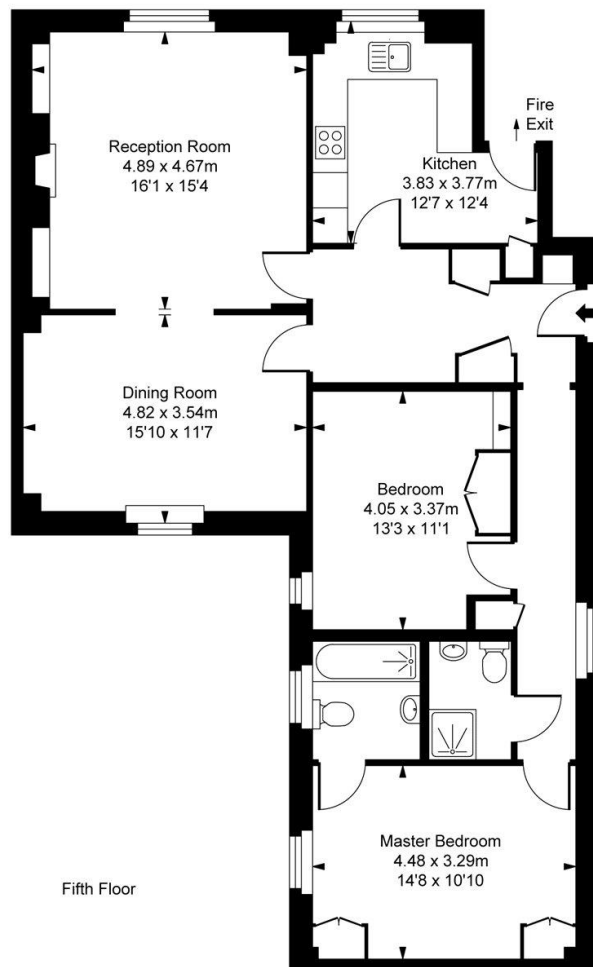
ADDITIONAL INFORMATION

Offers	Available for a minimum term of 12 months longer terms will be considered
Viewing	Strictly by appointment
Local Authority	Westminster County Council - Council Tax Band H
Material Information	Communal heating and hot water Broadband standard copper





Chesterfield House,  
Chesterfield Gardens, W1J  
Approximate Gross Internal Area  
106.19 sq m / 1,143 sq ft



This plan is not to scale. It is for guidance and not for valuation purposes.  
All measurements and areas are approximate only, and have been prepared in accordance with the current edition of the RICS Code of Measuring Practice.  
© Fulham Performance

T: 020 7493 0676

18 Davies Street, Mayfair, London, W1K 3DS

E: [mayfair@carterjonas.co.uk](mailto:mayfair@carterjonas.co.uk)



Exclusive UK affiliate of

**CHRISTIE'S**  
INTERNATIONAL REAL ESTATE

Classification L2 - Business Data



#### IMPORTANT INFORMATION

These particulars are for general information purposes only and do not represent an offer or contract or part of one. Carter Jonas or anyone in their employment has made every attempt to ensure that the particulars and other information provided are as accurate as possible and they are not intended to amount to advice on which you should rely as being factually accurate. Full information which may be relevant to your decision regarding the property can be found on the property listing on [carterjonas.co.uk](http://carterjonas.co.uk) or a separately available material information sheet, and we would advise you to confirm the details of any material information prior to any offer being submitted. You should not assume that the property has all necessary planning, building regulations or other consents and Carter Jonas has not tested any services, facilities, or equipment. Any measurements and distances given are approximate only. Where Carter Jonas has been provided with a floorplan by a third party, we cannot guarantee that the floorplan has been measured in accordance with IPMS. Purchasers or prospective tenants must satisfy themselves of all of the aforementioned by independent inspection or otherwise. Our images only represent part of the property as it appeared at the time they were taken and do not represent the furnishings included; these are confirmed in a separate inventory. If you require further information, please contact us. \*Administration fees may apply depending on tenancy type. Please contact your local branch for this information.