



CHESTERFIELD HOUSE, CHESTERFIELD GARDENS, W1J
£650 per week*

Carter Jonas

CHESTERFIELD HOUSE, CHESTERFIELD GARDENS, W1J

A spacious, one bedroom apartment of approximately 687 square feet

Situated on the second floor of a well-kept period building with lift and porter ideally located within walking distance of Hyde Park, transport links and the facilities of Shepherd Market, the apartment has been finished in a traditional style and offers original stripped wood flooring to the principal rooms and communal central heating and hot water.

Mayfair is London's most fashionable destination. With London's finest buildings, largest concentration of luxury hotels, best restaurants, bars, shopping, open spaces and hidden treasures all nestled together in a beautiful village setting.

Nearest Tube: Green Park / Hyde Park Corner.

AST

The deposit will be £3,250 at a rental value of £650 (asking price)

Holding deposit = 1 weeks rent of £650

Rent is not payable weekly

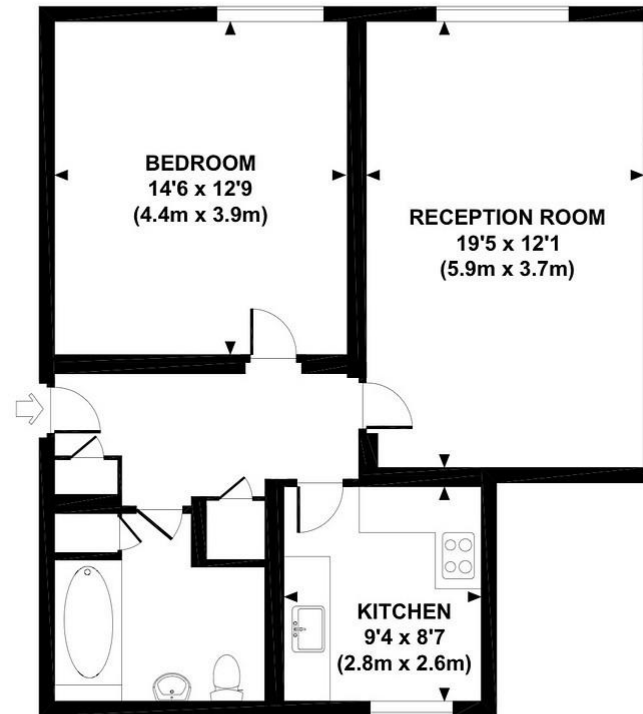
Deposit is 5 weeks rent (£650 pw = £3,250 deposit)

- Long Let, minimum term 12 months
 - Furnished
 - 1 Bedroom
 - 1 Reception
 - 1 Kitchen
 - 1 Bathroom
 - EPC = C
 - Council Tax Band = F
- Material Information:
- Communal heating and hot water
 - Broadband standard copper

Energy Efficiency Rating		
	Current	Potential
Very energy efficient - lower running costs		
(92-100) A		
(81-91) B		
(69-80) C	71	79
(55-68) D		
(39-54) E		
(21-38) F		
(1-20) G		
Not energy efficient - higher running costs		
England, Scotland & Wales EU Directive 2002/91/EC		

CHESTERFIELD GARDENS, W1K

Approx. gross internal area
687 Sq.Ft. / 63.8 Sq.M.



SECOND FLOOR



Mayfair Lettings 020 7493 0676

mayfair@carterjonas.co.uk

18 Davies Street, Mayfair, London, W1K 3DS



A member of

Exclusive UK affiliate of

CHRISTIE'S
INTERNATIONAL REAL ESTATE
Classification L2 - Business Data

IMPORTANT INFORMATION

These particulars are for general information purposes only and do not represent an offer or contract or part of one. Carter Jonas or anyone in their employment has made every attempt to ensure that the particulars and other information provided are as accurate as possible and they are not intended to amount to advice on which you should rely as being factually accurate. Full information which may be relevant to your decision regarding the property can be found on the property listing on carterjonas.co.uk or a separately available material information sheet, and we would advise you to confirm the details of any material information prior to any offer being submitted. You should not assume that the property has all necessary planning, building regulations or other consents and Carter Jonas has not tested any services, facilities, or equipment. Any measurements and distances given are approximate only. Where Carter Jonas has been provided with a floorplan by a third party, we cannot guarantee that the floorplan has been measured in accordance with IPMS. Purchasers or prospective tenants must satisfy themselves of all of the aforementioned by independent inspection or otherwise. Our images only represent part of the property as it appeared at the time they were taken and do not represent the furnishings included; these are confirmed in a separate inventory. If you require further information, please contact us. *Administration fees may apply depending on tenancy type. Please contact your local branch for this information.