



**PARK STREET, MAYFAIR, W1K**  
£1,950 per week\*

**Carter Jonas**

---

## APARTMENT 30, NEW HEREFORD HOUSE, PARK STREET, MAYFAIR, LONDON, W1K

A two-bedroom apartment of approximately 1,028 square feet

- 2 Bedrooms
- 2 Bathrooms
- 24hr Concierge
- Lift Access
- Separate Kitchen
- Air Conditioning

### THE PROPERTY

A beautifully refurbished two bedroom two bathroom apartment situated on the sixth floor of this sought after building with 24hr concierge. The apartment has been fully furnished to the highest standard throughout, comprising a large reception room, two spacious bedrooms, two bathrooms and a separate eat-in kitchen. The apartment further benefits from lift access, plentiful storage and air-conditioning.

Mayfair is London's most fashionable destination. With London's finest buildings, largest concentration of luxury hotels, best restaurants, bars, shopping, open spaces and hidden treasures all nestled together in a beautiful village setting.

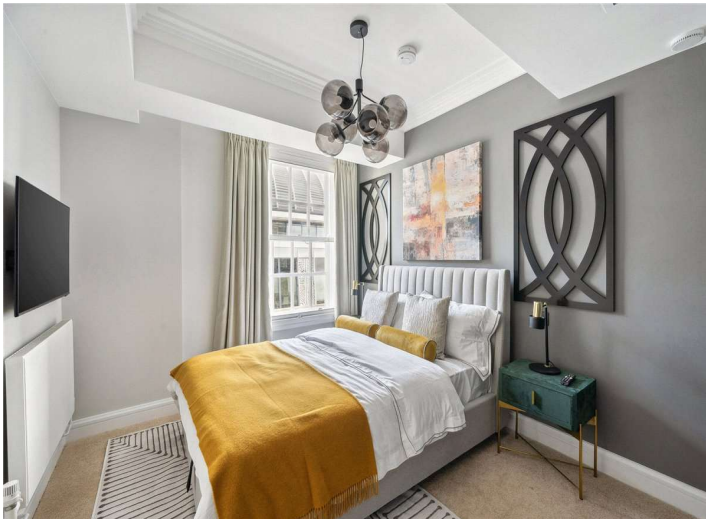
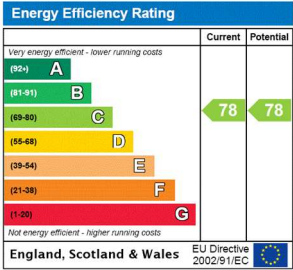




ADDITIONAL INFORMATION

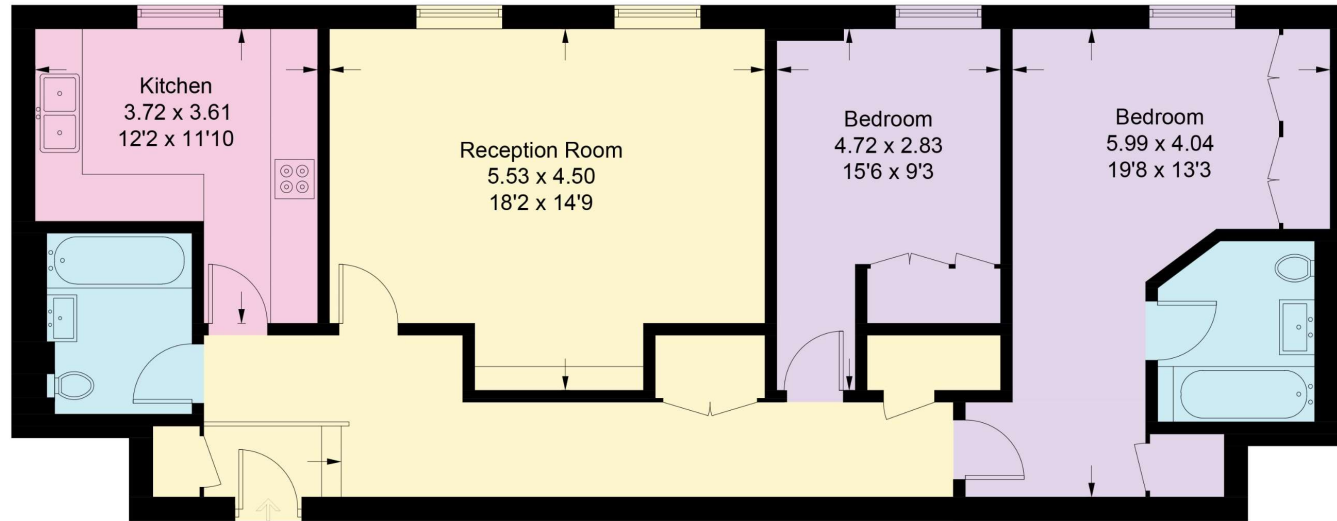
Offers	Available for a minimum term of 12 months longer terms will be considered
Viewing	Strictly by appointment
Local Authority	Westminster City Council - Council Tax Band H

Nearest Tube: Bond Street / Marble Arch  
NHA  
The deposit will be £11,700.00 at a rental value of £1,950.00 (asking price).  
Holding deposit = 1 weeks rent of £1,950.00  
Deposit is 6 weeks rent (£1,950.00 pw = £11,700.00 deposit)  
Minimum term 12 months  
Council Tax Band G  
EPC rating C  
Ultrafast broadband and mobile coverage available  
Boiler and mains gas central heating  
Communal hot water



## New Hereford House

Approximate Gross Internal Area = 95.5 sq m / 1028 sq ft



Sixth Floor IN

Illustration for identification purposes only, measurements are approximate, not to scale. floorplansUsketch.com © (ID796260)



T: 020 7493 0676

18 Davies Street, Mayfair, London, W1K 3DS

E: mayfair@carterjonas.co.uk

A member of



Exclusive UK affiliate of

**CHRISTIE'S**  
INTERNATIONAL REAL ESTATE

Classification L2 - Business Data

### IMPORTANT INFORMATION

These particulars are for general information purposes only and do not represent an offer or contract or part of one. Carter Jonas or anyone in their employment has made every attempt to ensure that the particulars and other information provided are as accurate as possible and they are not intended to amount to advice on which you should rely as being factually accurate. Full information which may be relevant to your decision regarding the property can be found on the property listing on [carterjonas.co.uk](http://carterjonas.co.uk) or a separately available material information sheet, and we would advise you to confirm the details of any material information prior to any offer being submitted. You should not assume that the property has all necessary planning, building regulations or other consents and Carter Jonas has not tested any services, facilities, or equipment. Any measurements and distances given are approximate only. Where Carter Jonas has been provided with a floorplan by a third party, we cannot guarantee that the floorplan has been measured in accordance with IPMS. Purchasers or prospective tenants must satisfy themselves of all of the aforementioned by independent inspection or otherwise. Our images only represent part of the property as it appeared at the time they were taken and do not represent the furnishings included; these are confirmed in a separate inventory. If you require further information, please contact us. \*Administration fees may apply depending on tenancy type. Please contact your local branch for this information.