



STRATTON STREET, LONDON, W1J

£3,750 per week*

Carter Jonas

FLAT 4, STRATTON STREET, LONDON, W1J

- Air conditioning
- Lift
- Porter
- Modern
- Newly renovated
- Prime location
- Furnished
- First floor

THE PROPERTY

Located on the highly desirable Stratton Street in the heart of Mayfair, this spacious and impeccably presented three-bedroom, three-bathroom lateral apartment offers luxurious living within a distinguished red brick period building. Just moments from Green Park and Berkeley Square, this elegant residence blends timeless architectural charm with contemporary style and comfort.

Occupying a generous footprint, the apartment is thoughtfully laid out to provide both functionality and sophistication. It features three well-proportioned double bedrooms, each with its own en-suite bathroom, ensuring the utmost privacy and convenience for residents and guests alike. A separate guest WC adds further practicality, ideal for entertaining.

The large, light-filled reception room provides an exceptional space for both relaxation and entertaining, complemented by a stylish, fully fitted kitchen equipped with high-quality integrated appliances and generous storage. The property also benefits from comfort cooling (air conditioning), neutral and refined décor, and quality finishes throughout.

Additional amenities include lift access, a welcoming day porter, and a secure, well-maintained building – all contributing to an elevated standard of living.

A superb three-bedroom, three-bathroom lateral apartment in a prestigious red brick building on Stratton Street, Mayfair.



ADDITIONAL INFORMATION	
Offers	Available for a minimum term of 12 months longer terms will be considered
Viewing	Strictly by appointment
Local Authority	- Council Tax Band

NHA

The deposit will be £22,500 at a rental value of £3,750 (asking price).

Holding deposit = 1 weeks rent of £3,750

Deposit is 6 weeks rent (£3,750 pw = £22,500 deposit)

Minimum Term 12 months

Closest tube: Green Park

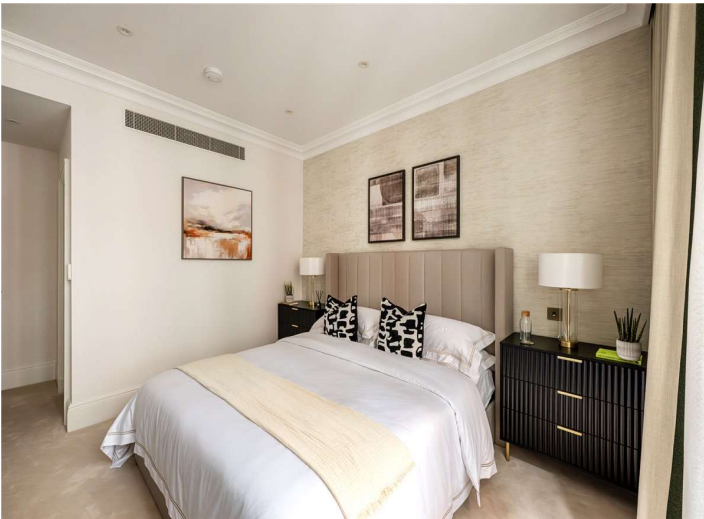
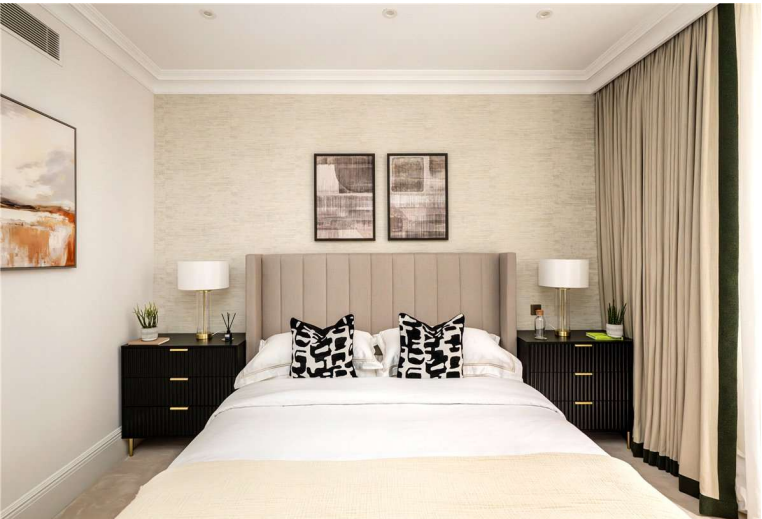
Council Tax Band H

Local Authority: City of Westminster

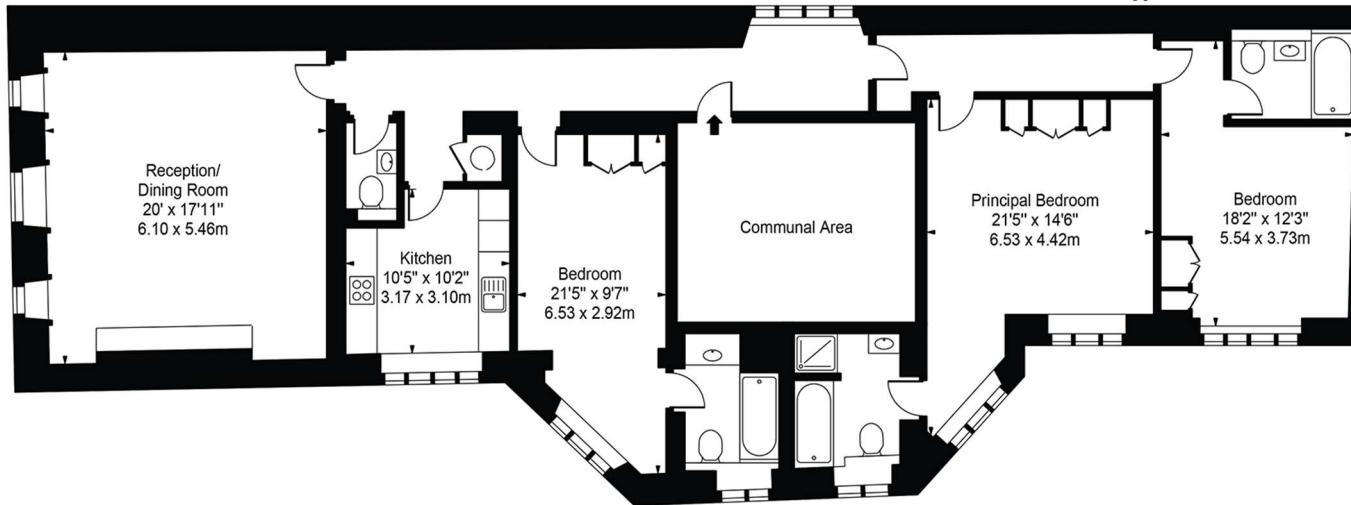
Main heating: Warm air, Electricaire

Copper Broadband

Score	Energy rating	Current	Potential
92+	A		
81-91	B		
69-80	C	77 C	77 C
55-68	D		
39-54	E		
21-38	F		
1-20	G		



Stratton Street, W1J
Approx. Gross Internal Area 1546 Sq Ft - 143.63 Sq M



First Floor

For Illustration Purposes Only - Not To Scale

This floor plan should be used as a general outline for guidance only and does not constitute in whole or in part an offer or contract. Any intending purchaser or lessee should satisfy themselves by inspection, searches, enquiries and full survey as to the correctness of each statement. Any areas, measurements or distances quoted are approximate and should not be used to value a property or be the basis of any sale or let.

Copyright Morriarti Photography & Design LTD



T: 020 7493 0676

18 Davies Street, Mayfair, London, W1K 3DS

E: mayfair@carterjonas.co.uk

A member of



Exclusive UK affiliate of

CHRISTIE'S
INTERNATIONAL REAL ESTATE

Classification L2 - Business Data

IMPORTANT INFORMATION

These particulars are for general information purposes only and do not represent an offer or contract or part of one. Carter Jonas or anyone in their employment has made every attempt to ensure that the particulars and other information provided are as accurate as possible and they are not intended to amount to advice on which you should rely as being factually accurate. Full information which may be relevant to your decision regarding the property can be found on the property listing on carterjonas.co.uk or a separately available material information sheet, and we would advise you to confirm the details of any material information prior to any offer being submitted. You should not assume that the property has all necessary planning, building regulations or other consents and Carter Jonas has not tested any services, facilities, or equipment. Any measurements and distances given are approximate only. Where Carter Jonas has been provided with a floorplan by a third party, we cannot guarantee that the floorplan has been measured in accordance with IPMS. Purchasers or prospective tenants must satisfy themselves of all of the aforementioned by independent inspection or otherwise. Our images only represent part of the property as it appeared at the time they were taken and do not represent the furnishings included; these are confirmed in a separate inventory. If you require further information, please contact us. *Administration fees may apply depending on tenancy type. Please contact your local branch for this information.