



**CHESTERFIELD GARDENS, MAYFAIR, W1J**

£1,303.85 per week\*

**Carter Jonas**

---

# FLAT 92, CHESTERFIELD HOUSE, CHESTERFIELD GARDENS, MAYFAIR, LONDON, W1J

A two-bedroom apartment of approximately 1,143 square feet.

- Long let, minimum term 12 months
- Furnished
- 2 Bedrooms
- 2 Bathrooms
- Separate Kitchen
- Double Reception

## THE PROPERTY

A spacious lateral apartment situated on the fifth floor of a well-kept period building with lift and porter ideally located within walking distance of Hyde Park, transport links and the facilities of Shepherd Market

Recently redecorated and presented to a high standard, the property is available on a furnished basis.

Mayfair is London`s most fashionable destination. With London`s finest buildings, largest concentration of luxury hotels, best restaurants, bars, shopping, open spaces and hidden treasures all nestled together in a beautiful village setting.

Nearest Tube: Green Park / Hyde Park Corner.

AST

The deposit will be £7,823.10 at a rental value of £1,303.85 (asking price)

Holding deposit = 1 week`s rent of £1,303.85

Rent is not payable weekly



## ADDITIONAL INFORMATION

Offers Available for a minimum term of 12 months longer terms will be considered

Viewing Strictly by appointment

Local Authority Westminster City Council - Council Tax Band H

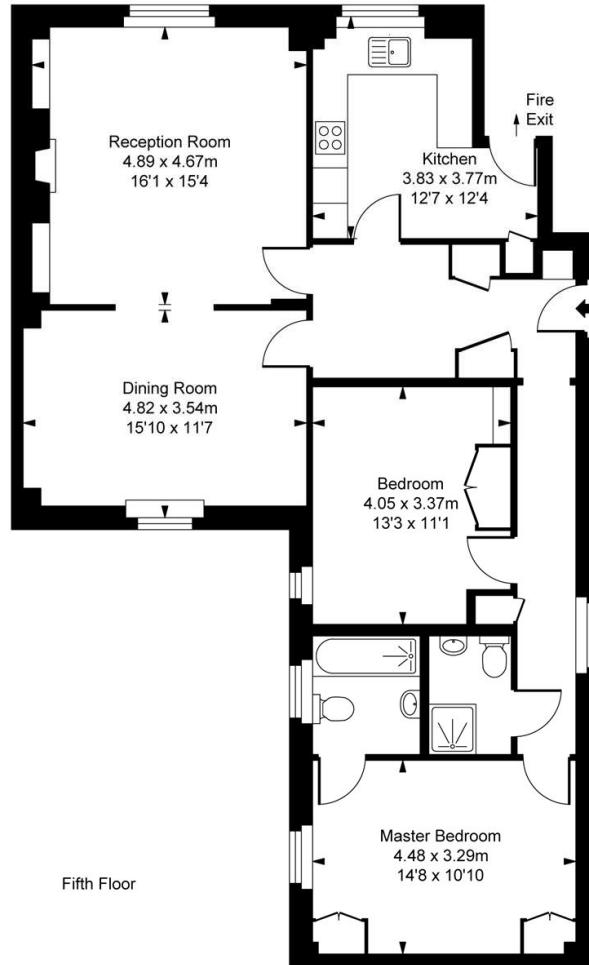
Deposit is 5 weeks rent (£1,303.85 pw = £7,823.10 deposit)  
Council Tax Band H  
Communal heating and hot water  
Broadband standard copper

Energy Efficiency Rating		Current	Potential
Very energy efficient - lower running costs			
(92+)	A		
(81-91)	B		
(69-80)	C		
(55-68)	D	61	64
(39-54)	E		
(21-38)	F		
(1-20)	G		
Not energy efficient - higher running costs			
England, Scotland & Wales		EU Directive 2002/91/EC	





Chesterfield House,  
 Chesterfield Gardens, W1J  
 Approximate Gross Internal Area  
 106.19 sq m / 1,143 sq ft



This plan is not to scale. It is for guidance and not for valuation purposes.  
 All measurements and areas are approximate only, and have been prepared in accordance with the current edition of the RICS Code of Measuring Practice.  
 © Fulham Performance



**T: 020 7493 0676**  
 18 Davies Street, Mayfair, London, W1K 3DS  
 E: [mayfair.lettings@carterjonas.co.uk](mailto:mayfair.lettings@carterjonas.co.uk)



Exclusive UK affiliate of

**CHRISTIE'S**  
 INTERNATIONAL REAL ESTATE

Classification L2 - Business Data

**IMPORTANT INFORMATION**

These particulars are for general information purposes only and do not represent an offer or contract or part of one. Carter Jonas or anyone in their employment has made every attempt to ensure that the particulars and other information provided are as accurate as possible and they are not intended to amount to advice on which you should rely as being factually accurate. Full information which may be relevant to your decision regarding the property can be found on the property listing on [carterjonas.co.uk](http://carterjonas.co.uk) or a separately available material information sheet, and we would advise you to confirm the details of any material information prior to any offer being submitted. You should not assume that the property has all necessary planning, building regulations or other consents and Carter Jonas has not tested any services, facilities, or equipment. Any measurements and distances given are approximate only. Where Carter Jonas has been provided with a floorplan by a third party, we cannot guarantee that the floorplan has been measured in accordance with IPMS. Purchasers or prospective tenants must satisfy themselves of all of the aforementioned by independent inspection or otherwise. Our images only represent part of the property as it appeared at the time they were taken and do not represent the furnishings included; these are confirmed in a separate inventory. If you require further information, please contact us. \*Administration fees may apply depending on tenancy type. Please contact your local branch for this information.