



BRYANSTON MEWS WEST, MARYLEBONE, W1H
£1,850 per week*

Carter Jonas

BRYANSTON MEWS WEST, MARYLEBONE, LONDON, W1H 2BW

- 4 Bedrooms
- 3 Bathrooms
- Utility Room
- Open-plan Reception room
- Mews House
- Long Let
- Unfurnished (or furnished at separate cost)

LOCATION

The Portman Estate's 110 acres of land within Marylebone, London W1, has a rich heritage dating back to the 16th century and is the setting for continual investment in premium residential properties, shops and independent businesses. The Portman Estate includes key places of architectural and historical interest along with a vibrant blend of shops, including Portman Village, restaurants, wine-bars, hotels and garden squares - a perfect mix of leisure opportunities for residents in the heart of London's West End.

THE PROPERTY

A beautiful mews house, finished to a high standard and incorporating a spectacular circular stairwell providing access to all floors.

It comprises a large double height reception room with semi open plan kitchen, four double bedrooms, three modern bathrooms and a guest cloakroom.

Available for long term rental on an unfurnished basis, rental furniture is available at separate cost.

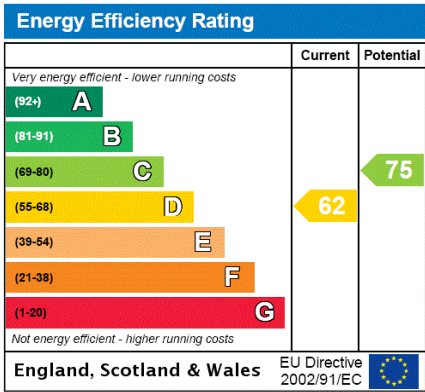
The property is professionally managed by the Portman Estate.

Minimum term - 12 months.

A rare opportunity to rent a stunning four bedroom house in central Marylebone location, moments from Oxford Street and Hyde Park.

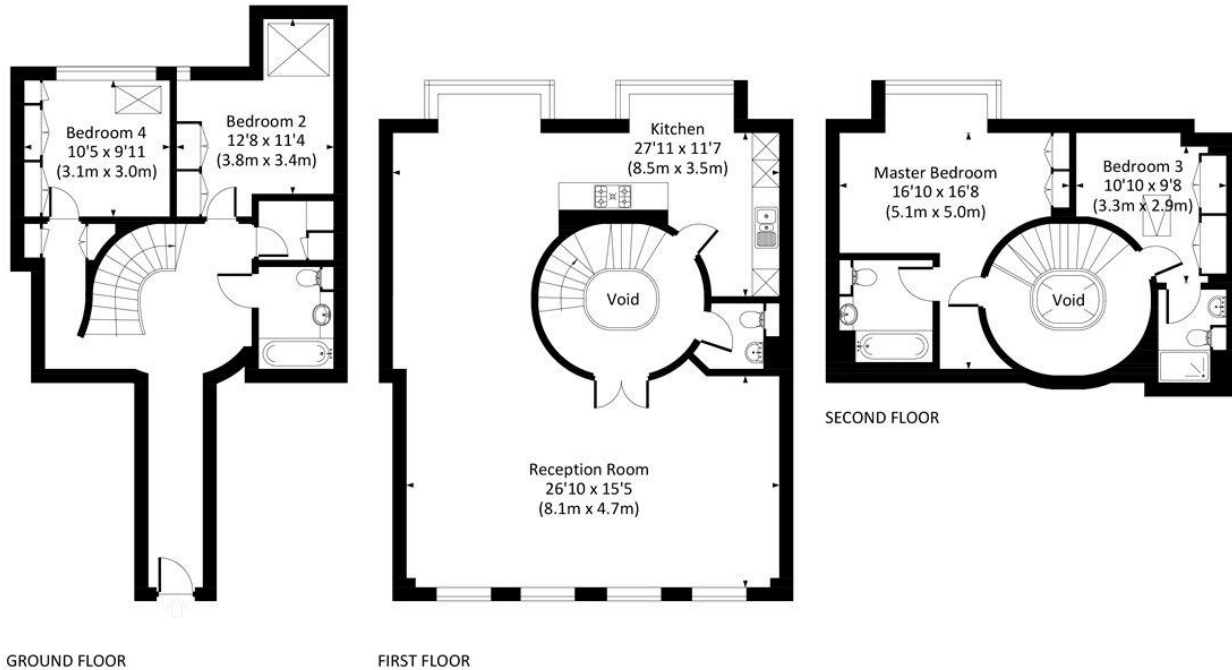



ADDITIONAL INFORMATION	
Offers	Available for a minimum term of 12 months longer terms will be considered
Viewing	Strictly by appointment
Local Authority	Westminster City Council - Council Tax Band H



BRYANSTON MEWS, W1H

Approx. gross internal area
180.2 Sq Ft. / 1940 Sq M. Excluding Voids



 All measurements have been made in accordance with RICS code of Measuring Practice which are approximate only and only for illustrative purposes. For the avoidance of doubt, Dowling Jones Design shall not be liable for any reliance on these measurements. © 2020 www.dowlingjones.com 020 7610 9933



T: 020 7486 8866

37 New Cavendish Street, London, W1G 9TL
E: marylebone@carterjonas.co.uk

carterjonas.co.uk
Offices throughout the UK

A member of

Classification L2 - Business Data

IMPORTANT INFORMATION

Our property particulars do not represent an offer or contract, or part of one. The information given is without responsibility on the part of the agents, seller(s) or lessor(s) and you should not rely on the information as being factually accurate about the property, its condition or its value. Neither Carter Jonas LLP nor anyone in its employment or acting on its behalf has authority to make any representation or warranty in relation to this property. We have not carried out a detailed survey, nor tested the services, appliances or fittings at the property. The images shown may only represent part of the property and are as they appeared at the time of being photographed. The areas, measurements and distances are approximate only. Where Carter Jonas have been provided with a floorplan by a third party, we can not guarantee that the floorplan has been measured in accordance with IPMS. Any reference to alterations or use does not mean that any necessary planning permission, building regulation or other consent has been obtained. The VAT position relating to the property may change without notice. Administration fees may apply depending on tenancy type. Please contact your local branch for this information.