



**MANCHESTER STREET, LONDON, W1U**

**£1,150.00 per week\***

**Carter Jonas**

---

## 3, MANCHESTER STREET, LONDON, W1U 7LS

This top floor maisonette is finished to a superb standard, combining lovely original features with a contemporary finish.

- Long Let
- 2 Bedrooms
- 1 Reception Rooms
- 1 Bathroom
- Maisonette
- Furnished, Part Furnished, Unfurnished

### THE PROPERTY

This apartment comprises a large reception room with wood floors, separate eat-in kitchen, two double bedrooms and one bathroom. Manchester Street is a quiet street located a stone's throw from the shops and restaurants of the trendy Chiltern Street, and Marylebone High Street.

Holding deposit is 1 weeks rent = £1,150 (at asking price).

Security deposit is 5 weeks rent = £5,750 (at asking price of £1,150 pw).

Minimum term 12 months

The Portman Estate's 110 acres of land within Marylebone, London W1, has a rich heritage dating back to the 16th century and is the setting for continual investment in premium residential properties, shops and independent businesses. The Portman Estate includes key places of architectural and historical interest along with a vibrant blend of shops, including Portman Village, restaurants, wine-bars, hotels and garden squares - a perfect mix of leisure opportunities for residents in the heart of London's West End.



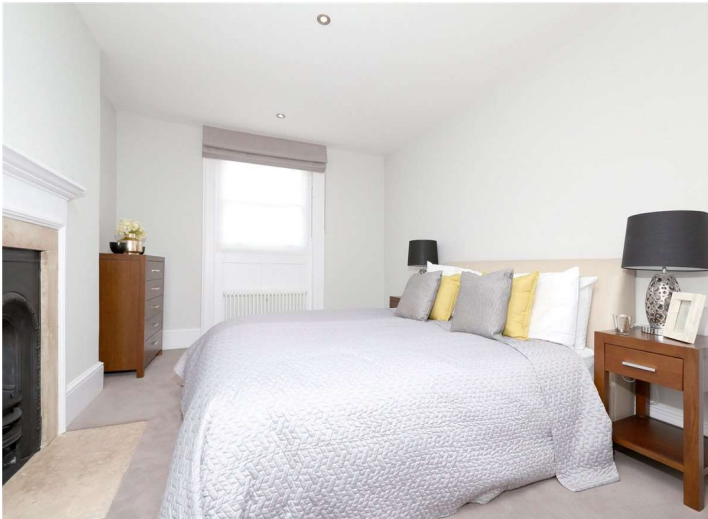


---

### ADDITIONAL INFORMATION

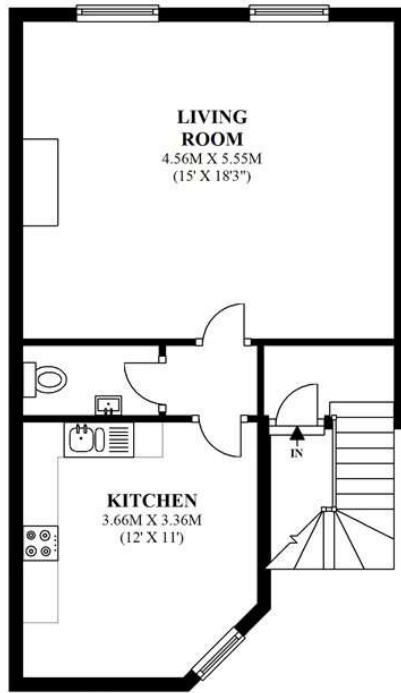
Offers	Available for a minimum term of 12 months longer terms will be considered
Viewing	Strictly by appointment
Local Authority	- Council Tax Band

---



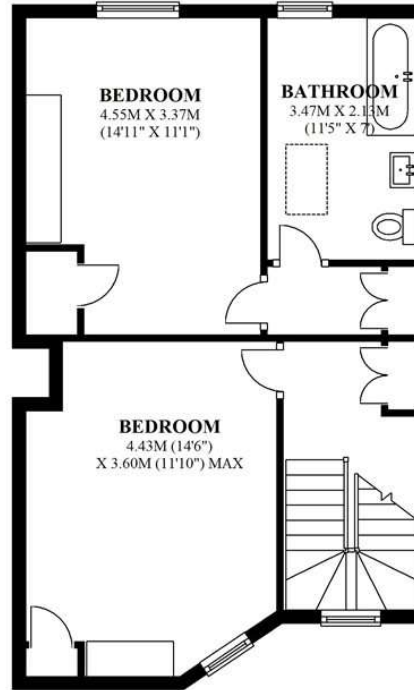
## SECOND FLOOR

APPROX. 43.1 SQ. METRES (464.3 SQ. FEET)



## THIRD FLOOR

APPROX. 49.0 SQ. METRES (527.6 SQ. FEET)



TOTAL AREA: APPROX. 92.1 SQ. METRES (991.8 SQ. FEET)

MANCHESTER STREET



**T: 020 7486 8866**

37 New Cavendish Street, London, W1G 9TL

E: [marylebone@carterjonas.co.uk](mailto:marylebone@carterjonas.co.uk)

**carterjonas.co.uk**  
Offices throughout the UK

A member of  
**onTheMarket.com**  
Classification L2 - Business Data

### IMPORTANT INFORMATION

Our property particulars do not represent an offer or contract, or part of one. The information given is without responsibility on the part of the agents, seller(s) or lessor(s) and you should not rely on the information as being factually accurate about the property, its condition or its value. Neither Carter Jonas LLP nor anyone in its employment or acting on its behalf has authority to make any representation or warranty in relation to this property. We have not carried out a detailed survey, nor tested the services, appliances or fittings at the property. The images shown may only represent part of the property and are as they appeared at the time of being photographed. The areas, measurements and distances are approximate only. Where Carter Jonas have been provided with a floorplan by a third party, we can not guarantee that the floorplan has been measured in accordance with IPMS. Any reference to alterations or use does not mean that any necessary planning permission, building regulation or other consent has been obtained. The VAT position relating to the property may change without notice. Administration fees may apply depending on tenancy type. Please contact your local branch for this information.