



**ROMNEY MEWS, CHILTERN STREET, W1U**  
£800 per week\*

**Carter Jonas**

---

## **ROMNEY MEWS, CHILTERN STREET, MARYLEBONE, LONDON, W1U 5DT**

- Mews House
- Two bedrooms
- Reception room
- Balcony
- Furnished or unfurnished

### **LOCATION**

Conveniently located for all that Marylebone has to offer, with Marylebone High Street a short walk away offering ample shopping, restaurants, and a large Waitrose Supermarket.

### **THE PROPERTY**

The property has two bedrooms, and one family bathroom. Spread across the first floor is the living room with space for dining, a separate kitchen and double doors leading out to a private balcony.

Conveniently located for all that Marylebone has to offer, with Marylebone High Street a short walk away offering ample shopping, restaurants, and a large Waitrose Supermarket.

Holding deposit is 1 week's rent = £800 (at asking price)

Security deposit is 5 weeks rent = £4,000 (£800pw at asking price)

Minimum term 12 months

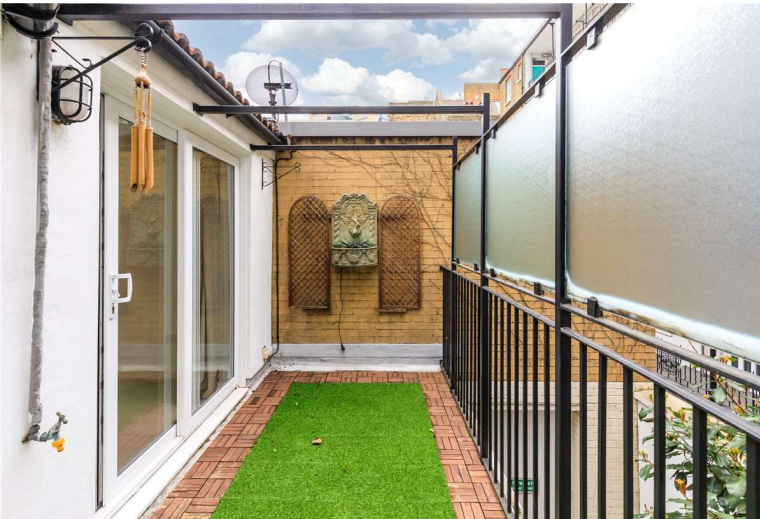
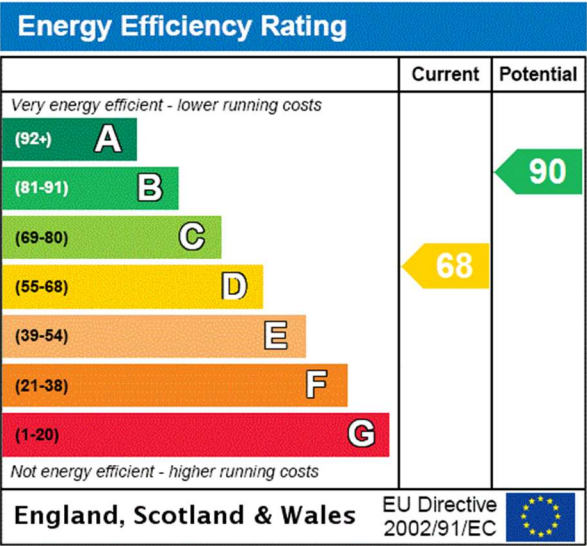
Council Tax Band F

## **Two-bedroom Mews house located within proximity to Marylebone High Street.**



ADDITIONAL INFORMATION

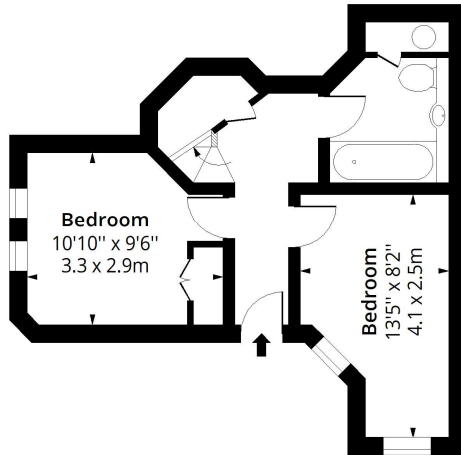
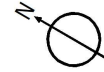
|                 |   |
|-----------------|---|
| Offers          | Available for a minimum term of 12 months longer terms will be considered |
| Viewing         | Strictly by appointment   |
| Local Authority | Westminster City Council - Council Tax Band F                             |





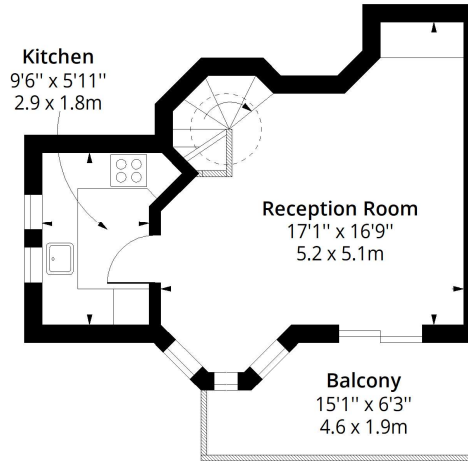
# Romney Mews, W1U

Approx. Gross Internal Area 640 Sq Ft - 59.46 Sq M  
Approx. Gross Balcony Area 84 Sq Ft - 7.80 Sq M



## Ground Floor

Floor Area 330 Sq Ft - 30.66 Sq M



## First Floor

Floor Area 310 Sq Ft - 28.80 Sq M



Measured according to RICS IPMS2. Floor plan is for illustrative purposes only and is not to scale. Every attempt has been made to ensure the accuracy of the floor plan shown, however all measurements, fixtures, fittings and data shown are an approximate interpretation for illustrative purposes only. 1 sq m = 10.76 sq feet.

lpaplus.com

Date: 27/2/2023



T: 020 7486 8866

37 New Cavendish Street, London, W1G 9TL

E: marylebone@carterjonas.co.uk

A member of



Exclusive UK affiliate of

**CHRISTIE'S**  
INTERNATIONAL REAL ESTATE

## IMPORTANT INFORMATION

These particulars are for general information purposes only and do not represent an offer of contract or part of one. Carter Jonas has made every attempt to ensure that the particulars and other information provided are as accurate as possible and are not intended to amount to advice on which you should rely as being factually accurate. You should not assume that the property has all necessary planning, building regulations or other consents and Carter Jonas have not tested any services, facilities or equipment. Any measurements and distances given are approximate only. Where Carter Jonas have been provided with a floorplan by a third party, we can not guarantee that the floorplan has been measured in accordance with IPMS. Purchasers or prospective tenants must satisfy themselves of all of the aforementioned by independent inspection or otherwise. Although we make reasonable efforts to update our information, neither Carter Jonas nor anyone in its employment or acting on its behalf makes any representations warranties or guarantees, whether express or implied, in relation to the property, or that the content in these particulars is accurate, complete or up to date. Our images only represent part of the property as it appeared at the time they were taken and do not represent the furnishings included, these are confirmed in a separate inventory. If you require further information please contact us.

\*Administration fees may apply depending on tenancy type. Please contact your local branch for this information.