



**NEW CAVENDISH STREET, MARYLEBONE, W1G**  
£495 per week\*

**Carter Jonas**



---

## **FLAT 3 CREFFIELD HOUSE, NEW CAVENDISH STREET, MARYLEBONE, LONDON,**

- One bedroom
- Separate kitchen
- Reception room
- Bathroom
- Unfurnished
- Newly decorated

### **LOCATION**

New Cavendish Street is a lively street located in the heart of London's West End. It runs from Portland Place in the north to Tottenham Court Road in the south, passing through the vibrant areas of Fitzrovia and Marylebone. The street is home to a diverse range of businesses, including shops, restaurants, and cultural institutions. You can access every part of London from Regents Park station (0.4 miles) Great Portland Street station (0.4 miles) Oxford Street station (0.4 miles) Bond Street station (0.5 miles).

### **THE PROPERTY**

This newly decorated apartment is located on the second floor of a mansion block and comprises of one bedroom, reception room, bathroom and separate kitchen.

Creffield House is a residential building on New Cavendish Street in Marylebone, London W1.

Holding deposit is 1 week's rent = £495 (at asking price)

Security deposit is 5 week's rent = £2,475 (at asking price £495pw)

Minimum term - 12 months

Council Tax- Band D

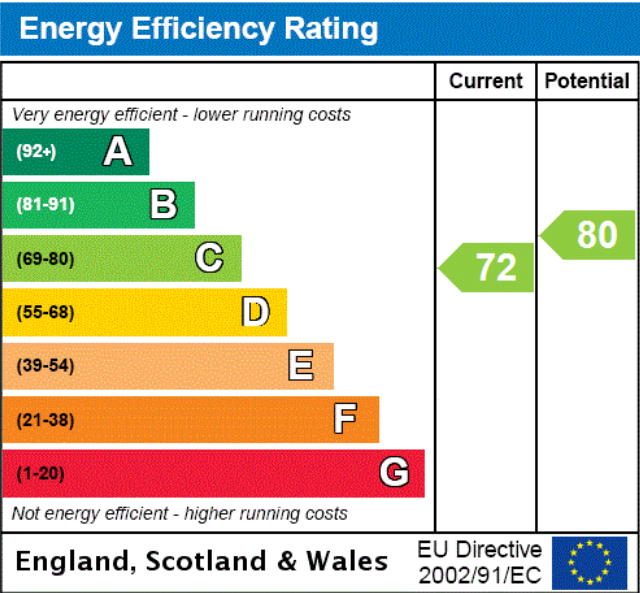
**One bedroom apartment on the first floor of a mansion block situated within proximity to Marylebone High Street.**





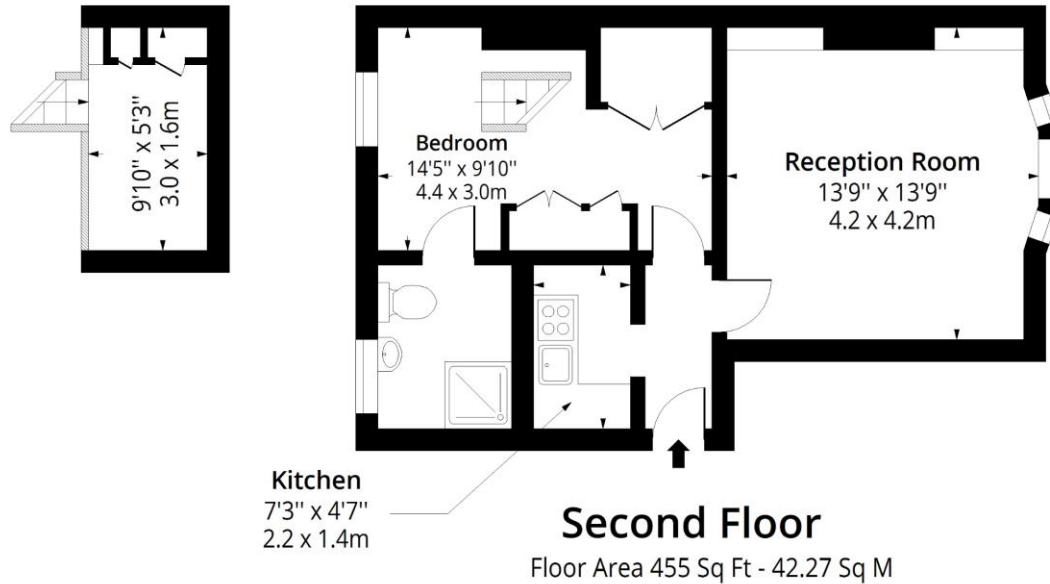
ADDITIONAL INFORMATION

Offers	Available for a minimum term of 12 months longer terms will be considered
Viewing	Strictly by appointment
Local Authority	Westminster City Council - Council Tax Band D



# Creffield House, W1G

Approx. Gross Internal Area 455 Sq Ft - 42.27 Sq M



Measured according to RICS IPMS2. Floor plan is for illustrative purposes only and is not to scale. Every attempt has been made to ensure the accuracy of the floor plan shown, however all measurements, fixtures, fittings and data shown are an approximate interpretation for illustrative purposes only. 1 sq m = 10.76 sq feet.

lpaplus.com

Date: 12/6/2023



## IMPORTANT INFORMATION

These particulars are for general information purposes only and do not represent an offer of contract or part of one. Carter Jonas has made every attempt to ensure that the particulars and other information provided are as accurate as possible and are not intended to amount to advice on which you should rely as being factually accurate. You should not assume that the property has all necessary planning, building regulations or other consents and Carter Jonas have not tested any services, facilities or equipment. Any measurements and distances given are approximate only. Where Carter Jonas have been provided with a floorplan by a third party, we can not guarantee that the floorplan has been measured in accordance with IPMS. Purchasers or prospective tenants must satisfy themselves of all of the aforementioned by independent inspection or otherwise. Although we make reasonable efforts to update our information, neither Carter Jonas nor anyone in its employment or acting on its behalf makes any representations warranties or guarantees, whether express or implied, in relation to the property, or that the content in these particulars is accurate, complete or up to date. Our images only represent part of the property as it appeared at the time they were taken and do not represent the furnishings included, these are confirmed in a separate inventory. If you require further information please contact us.

\*Administration fees may apply depending on tenancy type. Please contact your local branch for this information.

T: 020 7486 8866

37 New Cavendish Street, London, W1G 9TL

E: marylebone@carterjonas.co.uk

A member of



Exclusive UK affiliate of

**CHRISTIE'S**  
INTERNATIONAL REAL ESTATE

Classification L2 - Business Data