



MANCHESTER STREET, MARYLEBONE, W1U
£750 per week*

Carter Jonas

FLAT 1, MANCHESTER STREET, MARYLEBONE, LONDON, W1U 7LQ

- 1 Bedroom
- 1 Bathroom
- Reception Room
- Kitchen
- Private Patio
- Unfurnished

LOCATION

Manchester Street is conveniently located in the heart of Marylebone Village, just off Manchester Square. It is only a short distance from the restaurants, shops, and attractions of Marylebone and the West End, as well as outdoor spaces of Hyde Park, Regent's Park, and Manchester Square. Transport links are excellent from nearby Bond Street (about 0.5 mile) and Baker Street (about 0.3 mile) underground stations, as well as Marylebone (about 0.6 mile), Paddington (about 1.1 mile), and Euston (about 1.3 mile) mainline stations.

THE PROPERTY

This spacious and modern apartment comprises a reception room with wood flooring, separate eat-in kitchen, double bedroom, and bathroom, with the benefit of a private patio.

Available for long term rental on an unfurnished basis - furniture can be rented for additional cost.

The property is professionally managed by the Portman Estate.

Holding deposit is 1 week's rent = £750 (at asking price)

Security deposit is 5 week's rent = £3,750 (at asking price £750pw)

Minimum term 12 months

Council Tax Band E

This delightful one-bedroom apartment of over 800 sq. has been refurbished to an excellent standard and benefits from a large patio garden.



The Portman Estate's 110 acres of land within Marylebone, London W1, has a rich heritage dating back to the 16th century and is the setting for continual investment in premium residential properties, shops, and independent businesses. The Portman Estate includes key places of architectural and historical interest along with a vibrant blend of shops, restaurants, wine-bars, hotels, and garden squares.

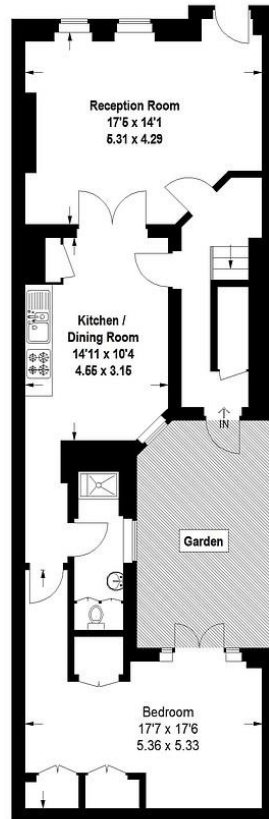
ADDITIONAL INFORMATION

Offers	Available for a minimum term of 12 months longer terms will be considered
Viewing	Strictly by appointment
Local Authority	Westminster City Council - Council Tax Band E



Manchester Street, W1

Approximate Gross Internal Area
76 sq m / 807 sq ft



Lower Ground Floor

This plan is for layout guidance only. Not drawn to scale unless stated. Windows and door openings are approximate. Whilst every care is taken in the preparation of this plan, please check all dimensions, shapes and compass bearings before making any decisions reliant upon them. (ID 68220)

T: 020 7486 8866

37 New Cavendish Street, London, W1G 9TL

E: marylebone@carterjonas.co.uk

A member of



Energy Efficiency Rating

	Current	Potential
Very energy efficient - lower running costs		
(92+) A		
(81-91) B		
(69-80) C		77
(55-68) D	66	
(39-54) E		
(21-38) F		
(1-20) G		
Not energy efficient - higher running costs		
England, Scotland & Wales	EU Directive 2002/91/EC	

IMPORTANT INFORMATION

These particulars are for general information purposes only and do not represent an offer of contract or part of one. Carter Jonas has made every attempt to ensure that the particulars and other information provided are as accurate as possible and are not intended to amount to advice on which you should rely as being factually accurate. You should not assume that the property has all necessary planning, building regulations or other consents and Carter Jonas have not tested any services, facilities or equipment. Any measurements and distances given are approximate only. Where Carter Jonas have been provided with a floorplan by a third party, we can not guarantee that the floorplan has been measured in accordance with IPMS. Purchasers or prospective tenants must satisfy themselves of all of the aforementioned by independent inspection or otherwise. Although we make reasonable efforts to update our information, neither Carter Jonas nor anyone in its employment or acting on its behalf makes any representations warranties or guarantees, whether express or implied, in relation to the property, or that the content in these particulars is accurate, complete or up to date. Our images only represent part of the property as it appeared at the time they were taken and do not represent the furnishings included, these are confirmed in a separate inventory. If you require further information please contact us.

*Administration fees may apply depending on tenancy type. Please contact your local branch for this information.

Exclusive UK affiliate of
CHRISTIE'S
INTERNATIONAL REAL ESTATE