



**GLOUCESTER PLACE, MARYLEBONE, W1U**  
£1,500 per week\*

**Carter Jonas**



## FLAT 5, GLOUCESTER PLACE, MARYLEBONE, LONDON, W1U 8JD

- Three Bedrooms
- Two Bathrooms
- Top Floor
- Set over two floors.
- Offered unfurnished or furnished at additional cost.

### LOCATION

Gloucester Place is ideally situated for the retail and entertainment options in Marylebone and St. Johns Wood, all of which are only 0.7 miles away, as well as the natural areas of close-by Regent's Park. It is situated just north of Dorset Square (approximately 320 meters). Marylebone Station, which serves the Jubilee, Bakerloo, Metropolitan, Circle, Hammersmith, and City lines, is conveniently situated (approximately 0.2 miles away), as is Baker Street Underground Station.

### THE PROPERTY

The flat is situated on the third and fourth floors of this period building ideally located in the heart of Marylebone.

The property is professionally managed by The Portman Estate.

Holding deposit is 1 week's rent = £1,500 (at asking price)

Security deposit is 6 week's rent = £9,000 (at asking price £1,500pw)

Minimum term 12 months

Council Tax Band TBC

The Portman Estate's 110 acres of land within Marylebone, London W1, has a rich heritage dating back to the 16th century and is the setting for continual investment in premium residential properties, shops and independent businesses. The Portman Estate includes key places of architectural and historical interest along with a vibrant blend of shops, including Portman Village, restaurants, wine-bars, hotels and garden squares - a perfect mix of leisure opportunities for residents in the heart of London's West End.


A spacious three double bedroom flat set over two floors with high spec finish, wood flooring and contemporary kitchen and bathrooms.





# ADDITIONAL INFORMATION

Offers	Available for a minimum term of 12 months longer terms will be considered
Viewing	Strictly by appointment
Local Authority	Westminster City Council - Council Tax Band NA

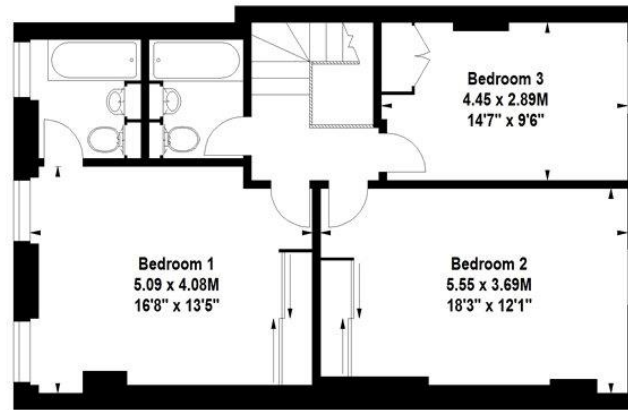
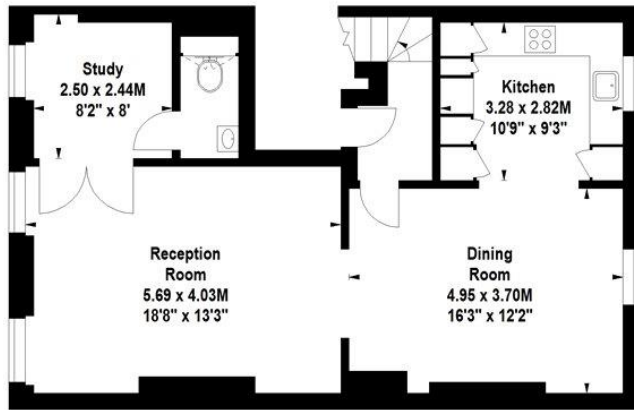
Energy Efficiency Rating		
	Current	Potential
Very energy efficient - lower running costs		
(92+) <b>A</b>		
(81-91) <b>B</b>		
(69-80) <b>C</b>		
(55-68) <b>D</b>	65	71
(39-54) <b>E</b>		
(21-38) <b>F</b>		
(1-20) <b>G</b>		
Not energy efficient - higher running costs		
England, Scotland & Wales	EU Directive 2002/91/EC	





## Gloucester Place, W1

Approximate Gross Internal Area 135.07 sq m (1454 sq ft)



hydepark@cluttons.com 020 7262 2226 cluttons.com

Floor Plan produced for Cluttons by Mays Floorplans © . Tel 020 3397 4594

Illustration for identification purposes only, not to scale

All measurements are maximum, and include wardrobes and window bays where applicable



### IMPORTANT INFORMATION

These particulars are for general information purposes only and do not represent an offer of contract or part of one. Carter Jonas has made every attempt to ensure that the particulars and other information provided are as accurate as possible and are not intended to amount to advice on which you should rely as being factually accurate. You should not assume that the property has all necessary planning, building regulations or other consents and Carter Jonas have not tested any services, facilities or equipment. Any measurements and distances given are approximate only. Where Carter Jonas have been provided with a floorplan by a third party, we can not guarantee that the floorplan has been measured in accordance with IPMS. Purchasers or prospective tenants must satisfy themselves of all of the aforementioned by independent inspection or otherwise. Although we make reasonable efforts to update our information, neither Carter Jonas nor anyone in its employment or acting on its behalf makes any representations warranties or guarantees, whether express or implied, in relation to the property, or that the content in these particulars is accurate, complete or up to date. Our images only represent part of the property as it appeared at the time they were taken and do not represent the furnishings included, these are confirmed in a separate inventory. If you require further information please contact us.

\*Administration fees may apply depending on tenancy type. Please contact your local branch for this information.

T: 020 7486 8866

37 New Cavendish Street, London, W1G 9TL

E: marylebone@carterjonas.co.uk

A member of



Exclusive UK affiliate of

**CHRISTIE'S**  
INTERNATIONAL REAL ESTATE