



**ALLSOP PLACE, MARYLEBONE, NW1**  
£725 per week\*

**Carter Jonas**



# **10 CORNWALL HOUSE, ALLSOP PLACE, MARYLEBONE, LONDON, NW1 5BF**

- 1 Bedroom
- 1 Bathroom
- Open Plan Reception
- Kitchen
- Furnished
- Portered building with Lift.

## **THE PROPERTY**

With hard wood floors throughout, under floor heating, integrated audio, and satellite connections.

The apartment comprises a lovely open plan reception with a high spec fully fitted kitchen, with a double bedroom with fitted wardrobes, and separate bathroom and useful storage cupboard off the hallway. The building benefits from a porter and lift.

Holding deposit is 1 week's rent = £725 (at asking price).

Security deposit is 5 weeks rent = £3,625 (at asking price of £725 per week).

Minimum term 12 months

Council Tax Band E

Marylebone still looks and feels something like the village it was 400 years ago and the handsome Georgian development it was 250 years ago. Its High Street is a pleasure to visit; the atmosphere is a bit more cosmopolitan than other parts of the city, and at the same time, a little more relaxed. A pristine haven a short walk from Oxford Circus filled with squares of tall, beautifully proportioned Georgian houses.

A superb interior designed apartment situated on the first floor of this modern secure development in great location moments from Baker Street Station.






ADDITIONAL INFORMATION

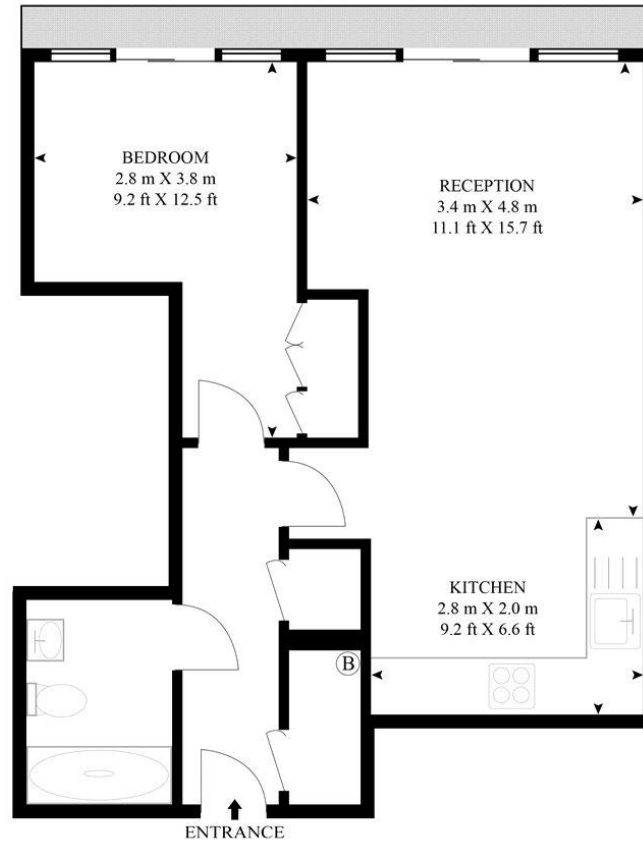
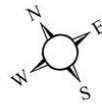
Offers	Available for a minimum term of 12 months longer terms will be considered
Viewing	Strictly by appointment
Local Authority	Westminster City Council - Council Tax Band E



Energy Efficiency Rating		
	Current	Potential
Very energy efficient - lower running costs		
(92+) <b>A</b>		
(81-91) <b>B</b>		
(69-80) <b>C</b>	80	80
(55-68) <b>D</b>		
(39-54) <b>E</b>		
(21-38) <b>F</b>		
(1-20) <b>G</b>		
Not energy efficient - higher running costs		
England, Scotland & Wales	EU Directive 2002/91/EC 	

## ALLSOP PLACE

APPROXIMATE GROSS INTERNAL FLOOR AREA 419 SQ.FT (39 SQ.M)



**HDVA** | w : [www.hdvirtualart.com](http://www.hdvirtualart.com)  
t : +44 (0) 2079 237 300

As Defined by RICS - Code of Measuring Practice. The Floor Plans are for representation purposes only and should be used as such by any prospective client

*Exclusive UK affiliate of*

**CHRISTIE'S**  
INTERNATIONAL REAL ESTATE

### IMPORTANT INFORMATION

These particulars are for general information purposes only and do not represent an offer of contract or part of one. Carter Jonas has made every attempt to ensure that the particulars and other information provided are as accurate as possible and are not intended to amount to advice on which you should rely as being factually accurate. You should not assume that the property has all necessary planning, building regulations or other consents and Carter Jonas have not tested any services, facilities or equipment. Any measurements and distances given are approximate only. Where Carter Jonas have been provided with a floorplan by a third party, we can not guarantee that the floorplan has been measured in accordance with IPMS. Purchasers or prospective tenants must satisfy themselves of all of the aforementioned by independent inspection or otherwise. Although we make reasonable efforts to update our information, neither Carter Jonas nor anyone in its employment or acting on its behalf makes any representations warranties or guarantees, whether express or implied, in relation to the property, or that the content in these particulars is accurate, complete or up to date. Our images only represent part of the property as it appeared at the time they were taken and do not represent the furnishings included, these are confirmed in a separate inventory. If you require further information please contact us.

\*Administration fees may apply depending on tenancy type. Please contact your local branch for this information.

**T: 020 7486 8866**

37 New Cavendish Street, London, W1G 9TL

E: [marylebone@carterjonas.co.uk](mailto:marylebone@carterjonas.co.uk)

A member of

