



**CHILTERN STREET, MARYLEBONE, W1U**  
£2,500 per week\*

**Carter Jonas**



## **22 CHILTERN PLACE, CHILTERN STREET, MARYLEBONE, LONDON, W1U 4EJ**

- 2 Bedrooms
- 2 Bathrooms
- 1 Reception room
- Unfurnished
- Concierge

### **THE PROPERTY**

Located in this prestigious development, this two-bedroom, two-bathroom flat overlooks Paddington Street with the master bedroom offering a westerly aspect towards Chiltern Street.

It has a generous size reception room with wood floors, separate kitchen, and balcony with fantastic views of London. There is a second bedroom and bathroom.

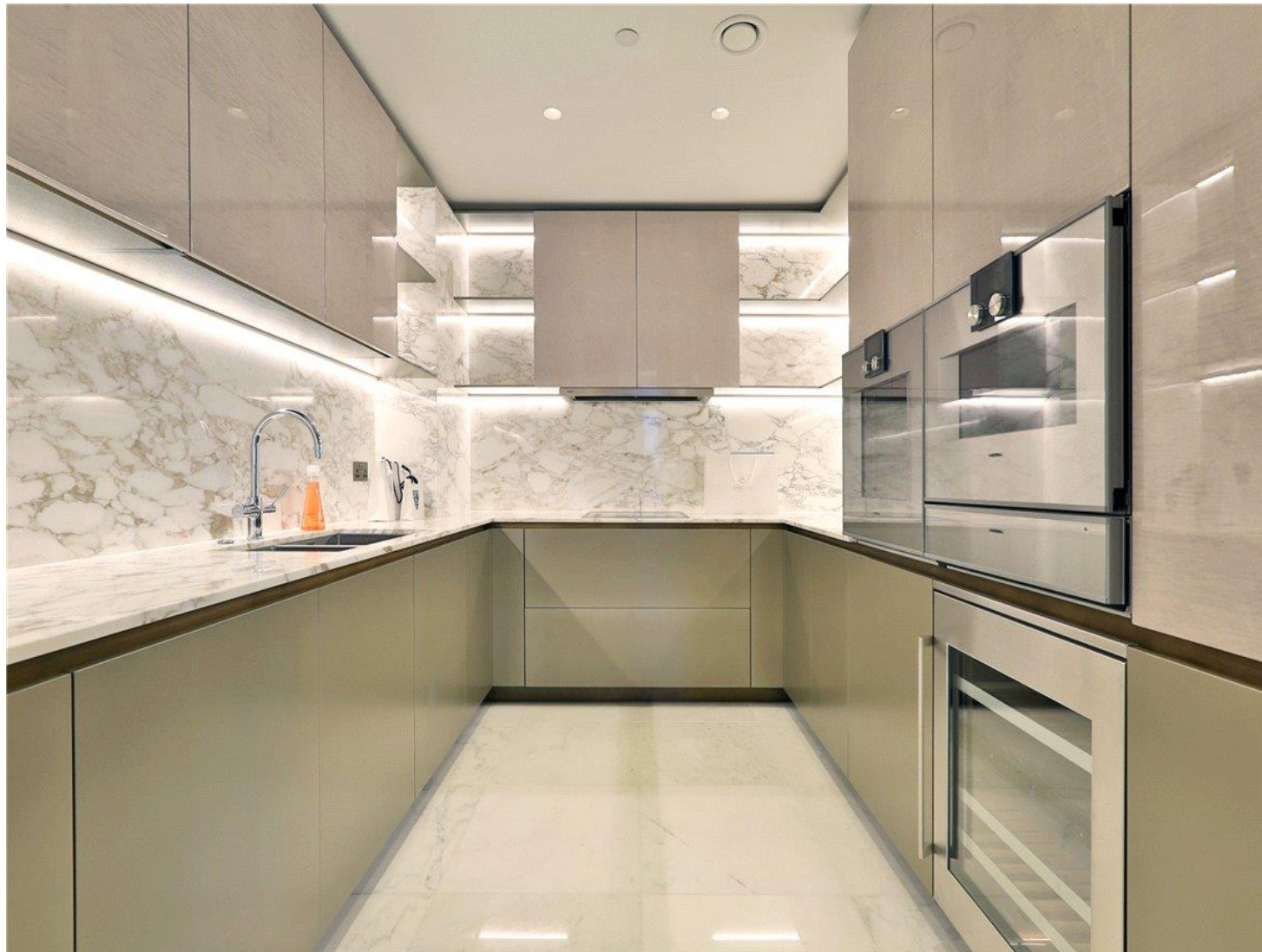
Available for immediate long-term rental on an unfurnished basis or furnished by separate negotiation.

Holding deposit is 1 week's rent = £2,500 (at asking price).

Security deposit is 6 weeks rent = £15,000 (at asking price of £2,500 per week).

Chiltern Place is a sophisticated oasis, proudly standing between the cosmopolitan buzz of Marylebone village and the West End. Nestled between two conservation areas, the building is designed to be contemporary and yet complement the existing architecture. It's everything an exclusive Central London property should be. The development features 24-hour porter and private gym.

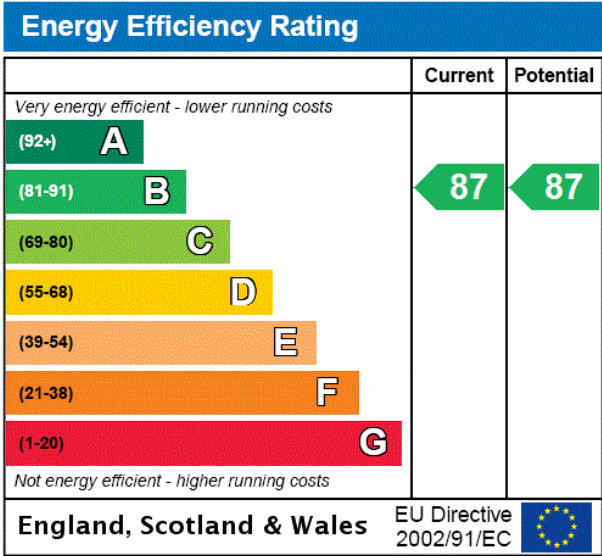
**Rare opportunity to rent this luxury two-bedroom apartment in this luxury development in Marylebone.**





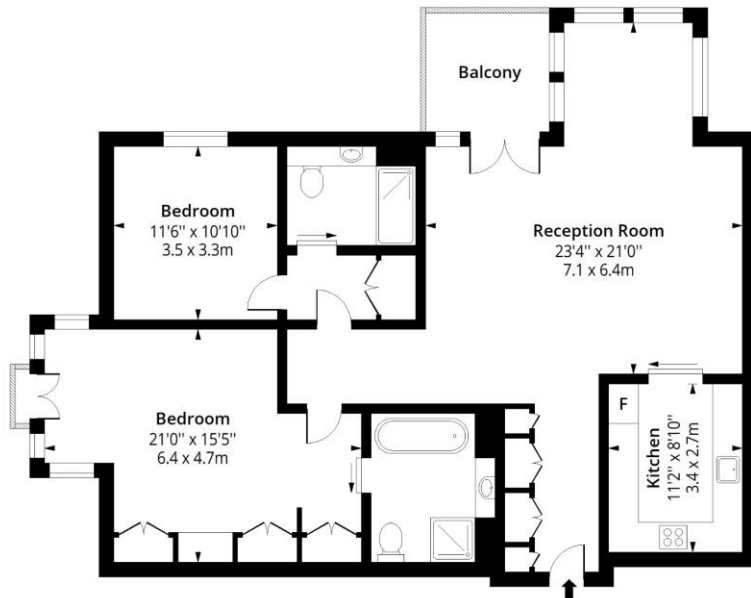
ADDITIONAL INFORMATION

Offers	Available for a minimum term of 12 months longer terms will be considered
Viewing	Strictly by appointment
Local Authority	Westminster City Council - Council Tax Band G



# Chilton Road, W1U

Approx. Gross Internal Area 1257 Sq Ft - 116.78 Sq M  
Approx. Gross Balcony Area 65 Sq Ft - 6.04 Sq M



## Fifth Floor

Floor Area 1257 Sq Ft - 116.78 Sq M



Measured according to RICS IPMS2. Floor plan is for illustrative purposes only and is not to scale. Every attempt has been made to ensure the accuracy of the floor plan shown, however all measurements, fixtures, fittings and data shown are an approximate interpretation for illustrative purposes only. 1 sq m = 10.76 sq feet.

lpaplus.com

Date: 31/7/2023



T: 020 7486 8866

37 New Cavendish Street, London, W1G 9TL

E: marylebone@carterjonas.co.uk

A member of



Exclusive UK affiliate of

**CHRISTIE'S**  
INTERNATIONAL REAL ESTATE

Classification L2 - Business Data

## IMPORTANT INFORMATION

These particulars are for general information purposes only and do not represent an offer of contract or part of one. Carter Jonas has made every attempt to ensure that the particulars and other information provided are as accurate as possible and are not intended to amount to advice on which you should rely as being factually accurate. You should not assume that the property has all necessary planning, building regulations or other consents and Carter Jonas have not tested any services, facilities or equipment. Any measurements and distances given are approximate only. Where Carter Jonas have been provided with a floorplan by a third party, we can not guarantee that the floorplan has been measured in accordance with IPMS. Purchasers or prospective tenants must satisfy themselves of all of the aforementioned by independent inspection or otherwise. Although we make reasonable efforts to update our information, neither Carter Jonas nor anyone in its employment or acting on its behalf makes any representations warranties or guarantees, whether express or implied, in relation to the property, or that the content in these particulars is accurate, complete or up to date. Our images only represent part of the property as it appeared at the time they were taken and do not represent the furnishings included, these are confirmed in a separate inventory. If you require further information please contact us.

\*Administration fees may apply depending on tenancy type. Please contact your local branch for this information.