



**HARLEY STREET, MARYLEBONE, W1G**  
£1,625 per week\*

**Carter Jonas**



# FLAT 1, HARLEY STREET, MARYLEBONE, LONDON, W1G 7AS

- 3 Bedrooms
- 3 Bathrooms
- 1 Reception Room
- Eat-In Kitchen
- Maisonette
- Ground & Lower Ground Floor
- Patio

## THE PROPERTY

The property comprises of a good sized reception room, eat-in kitchen, three bedrooms (one with en-suite bathroom and one with en-suite shower room), one additional shower room and a storage/wine cellar.

This flat benefits from outside space accessed from one of the bedrooms, plenty of built in storage, high ceilings and period features.

The property is professionally managed by the Howard de Walden Estate.

Available for long term rental on an unfurnished basis, rental furniture is available at separate cost.

Fibre optic broadband by G Network is included in the rent.

Holding deposit is 1 weeks rent = £1,625 (at asking price).

Security deposit is 5 weeks rent = £8,125 (at asking price of £1,625pw).

Minimum Term - 12 months

Stunning three bedroom flat with high ceilings and period features, set over two floors.





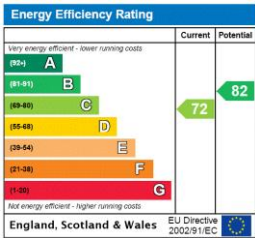
LOCATION

In the centre of Marylebone, Harley Street is a highly sought-after street. The renowned medical facilities, well-liked restaurants, and sophisticated boutique stores of Marylebone High Street are all nearby. There are excellent transport links from Regent's Street (approximately 0.3 miles), Oxford Street (approximately 0.5 miles) and Bond Street (approximately 0.6 miles) stations.

Marylebone still looks and feels something like the village it was 400 years ago and the handsome Georgian development it was 250 years ago. Its High Street in particular is a pleasure to visit; the atmosphere is a bit more cosmopolitan than other parts of the city, and at the same time, a little more relaxed. A pristine haven a short walk from Oxford Circus filled with squares of tall, beautifully proportioned Georgian houses.

ADDITIONAL INFORMATION

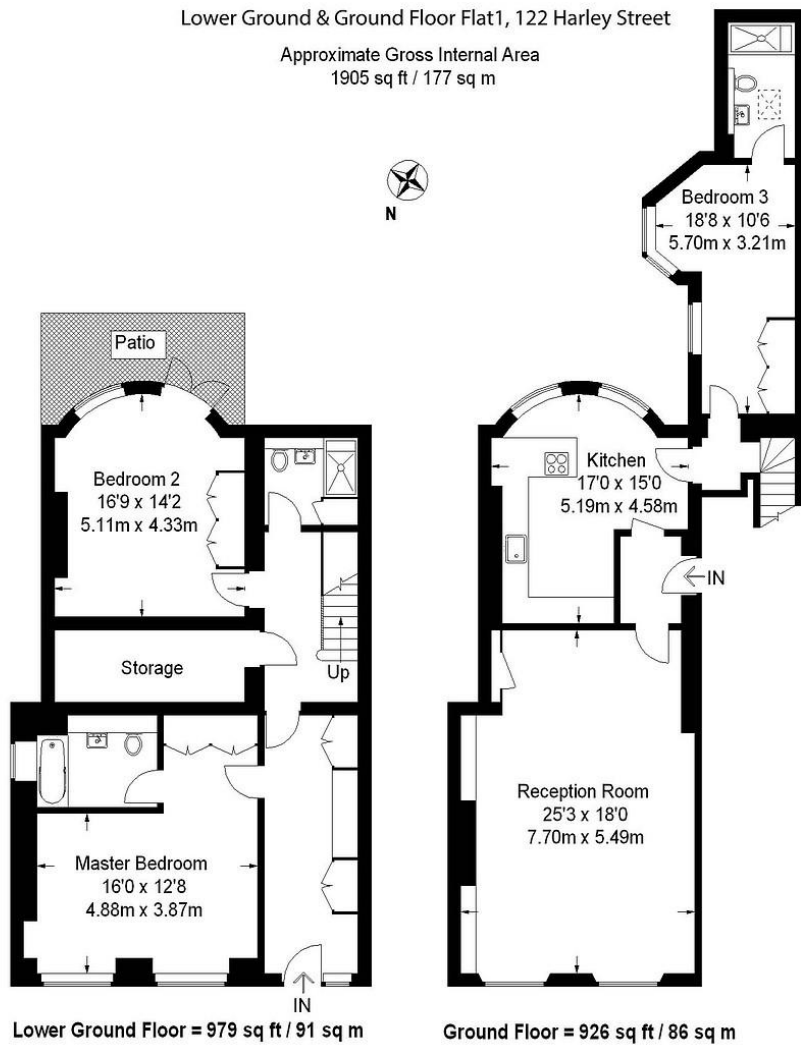
Offers	Available for a minimum term of 12 months longer terms will be considered
Viewing	Strictly by appointment
Local Authority	Westminster City Council - Council Tax Band H





Lower Ground & Ground Floor Flat1, 122 Harley Street

Approximate Gross Internal Area  
1905 sq ft / 177 sq m



For illustrative purposes only. Not to scale.  
Floorplan created by FRESH PHOTO HOUSE.



T: 020 7486 8866

37 New Cavendish Street, London, W1G 9TL

E: marylebone@carterjonas.co.uk



Exclusive UK affiliate of

**CHRISTIE'S**  
INTERNATIONAL REAL ESTATE

Classification L2 - Business Data

### IMPORTANT INFORMATION

Our property particulars do not represent an offer or contract, or part of one. The information given is without responsibility on the part of the agents, seller(s) or lessor(s) and you should not rely on the information as being factually accurate about the property, its condition or its value. Neither Carter Jonas LLP nor anyone in its employment or acting on its behalf has authority to make any representation or warranty in relation to this property. We have not carried out a detailed survey, nor tested the services, appliances or fittings at the property. The images shown may only represent part of the property and are as they appeared at the time of being photographed. The areas, measurements and distances are approximate only. Where Carter Jonas have been provided with a floorplan by a third party, we can not guarantee that the floorplan has been measured in accordance with IPMS. Any reference to alterations or use does not mean that any necessary planning permission, building regulation or other consent has been obtained. The VAT position relating to the property may change without notice. Administration fees may apply depending on tenancy type. Please contact your local branch for this information.