



BLANDFORD STREET, LONDON, W1U
£920 per week*

Carter Jonas

BLANDFORD STREET, LONDON, W1U 3DJ

- 2 Bedrooms
- 2 Bathroom
- Open plan kitchen/reception
- Wood flooring
- Flat/ Apartment
- Unfurnished (or furnished at separate cost)

LOCATION

Blandford Street is in the heart of Marylebone, just a short distance from the upscale shops and restaurants of Marylebone Village. The vast fields of Regent's Park are also close by. Excellent transportation connections may be found at Bond Street (approximately 0.4 miles) and Baker Street (approximately 0.4 miles).

THE PROPERTY

This apartment features two bedrooms and two bathrooms, including an open-plan kitchen/reception room with wood flooring and premium appliances. The master bedroom comes with an en-suite bathroom, and there is also a second bedroom and a separate shower room.

The property is professionally managed by The Portman Estate.

Available for long term rental on an unfurnished basis, or furnished (at separate cost)

Holding deposit is 1 week's rent = £920 (at asking price)

Security deposit is 5 week's rent = £4,600 (at asking price £920pw)

Minimum term 12 months

Council Tax Band F

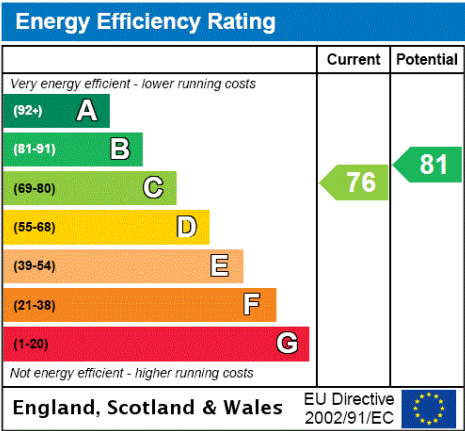
The apartment comprises an open plan kitchen/ reception room with wood flooring and high quality appliances, master bedroom with en-suite bathroom, second bedroom and shower room.



The Portman Estate`s 110 acres of land within Marylebone, London W1, has a rich heritage dating back to the 16th century and is the setting for continual investment in premium residential properties, shops and independent businesses. The Portman Estate includes key places of architectural and historical interest along with a vibrant blend of shops, including Portman Village, restaurants, wine-bars, hotels and garden squares - a perfect mix of leisure opportunities for residents in the heart of London`s West End.

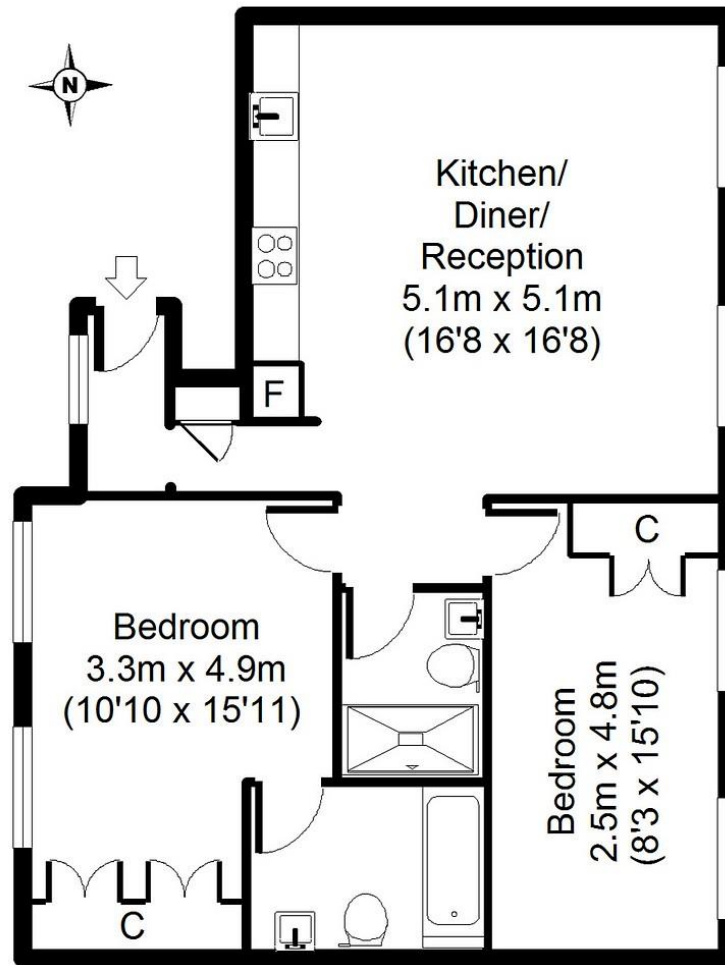
ADDITIONAL INFORMATION

Offers	Available for a minimum term of 12 months longer terms will be considered
Viewing	Strictly by appointment
Local Authority	Westminster City Council - Council Tax Band F



Second Floor

Approx. 65 sq. meters (701 sq. feet)



Total area: approx. 65 sq. meters (701 sq. feet)
For illustration purposes only - not to scale



IMPORTANT INFORMATION

These particulars are for general information purposes only and do not represent an offer of contract or part of one. Carter Jonas has made every attempt to ensure that the particulars and other information provided are as accurate as possible and are not intended to amount to advice on which you should rely as being factually accurate. You should not assume that the property has all necessary planning, building regulations or other consents and Carter Jonas have not tested any services, facilities or equipment. Any measurements and distances given are approximate only. Where Carter Jonas have been provided with a floorplan by a third party, we can not guarantee that the floorplan has been measured in accordance with IPMS. Purchasers or prospective tenants must satisfy themselves of all of the aforementioned by independent inspection or otherwise. Although we make reasonable efforts to update our information, neither Carter Jonas nor anyone in its employment or acting on its behalf makes any representations warranties or guarantees, whether express or implied, in relation to the property, or that the content in these particulars is accurate, complete or up to date. Our images only represent part of the property as it appeared at the time they were taken and do not represent the furnishings included, these are confirmed in a separate inventory. If you require further information please contact us.

*Administration fees may apply depending on tenancy type. Please contact your local branch for this information.

T: 020 7486 8866

37 New Cavendish Street, London, W1G 9TL

E: marylebone@carterjonas.co.uk

A member of



Exclusive UK affiliate of

CHRISTIE'S
INTERNATIONAL REAL ESTATE