



**BULSTRODE STREET, LONDON, W1U**  
£750 per week\*

**Carter Jonas**



## **BASEMENT FLAT, BULSTRODE STREET, LONDON, W1U 2JB**

- 1 Bedroom
- 2 Bathrooms
- 1 Reception room
- Basement
- Patio
- Unfurnished (or furnished at separate cost)
- G-Network is included in the rent.

### **LOCATION**

Close to Marylebone High Street and Saint Christopher's Place is the peaceful residential street of Bulstrode. The abundance of amenities in Marylebone and Mayfair are conveniently close by. At six minutes' walk from the property, Bond Street Station has good transportation connections.

### **THE PROPERTY**

Discover urban elegance in this 1-bedroom, 2-bathroom residence on Bulstrode Street. Featuring a spacious reception room, basement, and a charming patio. The home boasts wooden floors throughout, offering a perfect blend of comfort and style.

The property is professionally managed by the Howard de Walden Estate.

Available for long term rental on an unfurnished basis, or furnished (at separate cost)

Fibre Optic broadband provided by G-Network is included in the rent.

Holding deposit is 1 week's rent = £750 (at asking price)

Security deposit is 5 week's rent = £3,750 (at asking price £750pw)

Minimum term 12 months

Council Tax Band D

**Charming 1-bedroom, 2-bathroom on Bulstrode Street now available to rent. Featuring a spacious reception room, basement, and a charming patio.**

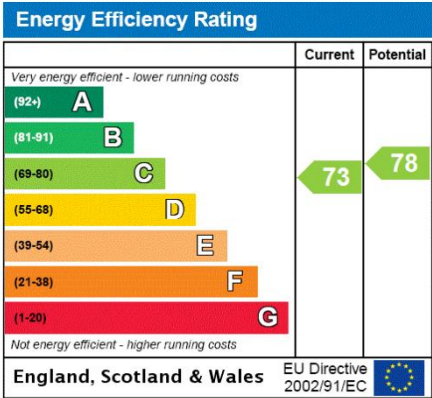




Marylebone still looks and feels something like the village it was 400 years ago and the handsome Georgian development it was 250 years ago. Its High Street is a pleasure to visit; the atmosphere is a bit more cosmopolitan than other parts of the city, and at the same time, a little more relaxed. A pristine haven a short walk from Oxford Circus filled with squares of tall, beautifully proportioned Georgian houses.

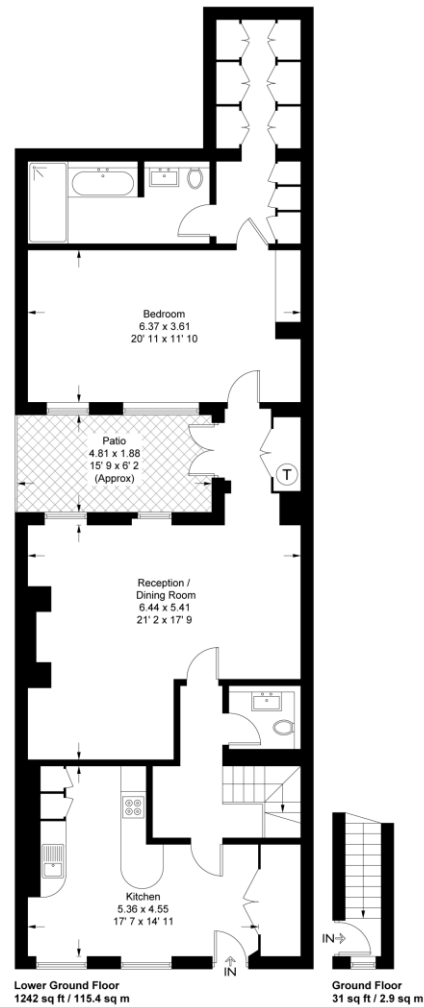
ADDITIONAL INFORMATION

Offers	Available for a minimum term of 12 months longer terms will be considered
Viewing	Strictly by appointment
Local Authority	Westminster City Council - Council Tax Band D



## Bulstrode Street

Approximate Gross Internal Area = 1273 sq ft / 118.3 sq m



This plan is not to scale and must be used as layout guidance only. All measurements and areas are approximate and should not be relied upon to provide accurate information. This plan must not be relied upon when making property valuations, design considerations or any other such relevant decisions. We accept no responsibility or liability (whether in contract, tort or otherwise) in relation to any loss whatsoever arising from or in connection with any use of this plan or the adequacy, accuracy or completeness of it or any information within it.

**T: 020 7486 8866**

37 New Cavendish Street, London, W1G 9TL

E: marylebone@carterjonas.co.uk

A member of



*Exclusive UK affiliate of*

**CHRISTIE'S**  
INTERNATIONAL REAL ESTATE

Classification L2 - Business Data



### IMPORTANT INFORMATION

These particulars are for general information purposes only and do not represent an offer of contract or part of one. Carter Jonas has made every attempt to ensure that the particulars and other information provided are as accurate as possible and are not intended to amount to advice on which you should rely as being factually accurate. You should not assume that the property has all necessary planning, building regulations or other consents and Carter Jonas have not tested any services, facilities or equipment. Any measurements and distances given are approximate only. Where Carter Jonas have been provided with a floorplan by a third party, we can not guarantee that the floorplan has been measured in accordance with IPMS. Purchasers or prospective tenants must satisfy themselves of all of the aforementioned by independent inspection or otherwise. Although we make reasonable efforts to update our information, neither Carter Jonas nor anyone in its employment or acting on its behalf makes any representations warranties or guarantees, whether express or implied, in relation to the property, or that the content in these particulars is accurate, complete or up to date. Our images only represent part of the property as it appeared at the time they were taken and do not represent the furnishings included, these are confirmed in a separate inventory. If you require further information please contact us.

\*Administration fees may apply depending on tenancy type. Please contact your local branch for this information.