



WIGMORE STREET, LONDON, W1U
£800 per week*

Carter Jonas

FLAT 3, WIGMORE STREET, LONDON, W1U 1QE

- 1 Bedroom
- 1 Bathroom
- Modern kitchen
- First Floor (with lift)
- Long Let
- Unfurnished

LOCATION

Wigmore Street, nestled in the heart of London, is a bustling and vibrant destination. Renowned for its upscale shopping, this iconic street offers an array of high-end boutiques, luxury brands, and exclusive department stores. With its elegant architecture and trendy cafes, Wigmore Street is a must-visit for those seeking a sophisticated London experience.

THE PROPERTY

This impeccably finished first-floor apartment, boasting convenient elevator access, presents a harmonious blend of contemporary design and practicality. The spacious open-plan living area seamlessly flows into a fully equipped kitchen, creating an inviting space for relaxation and culinary pursuits alike. A generously proportioned double bedroom offers comfort and tranquillity, complemented by a modern bathroom featuring sleek fixtures and finishes.

Elevating the living experience further, the residence boasts luxurious wood flooring throughout, alongside premium Bosch and Bora appliances in the kitchen, ensuring both style and functionality. The inclusion of a sophisticated heating and cooling fan system enhances year-round comfort, while residents also benefit from access to communal bike storage facilities, catering to active lifestyles and promoting a sense of community.

Available for immediate long-term rental on an unfurnished basis or furnished by separate negotiation.

Holding deposit is 1 week's rent = £800 (at asking price)

Security deposit is 5 week's rent = £4,000 (at asking price £800pw)

Beautiful one bedroom apartment located within a private development within St Christophers Place.

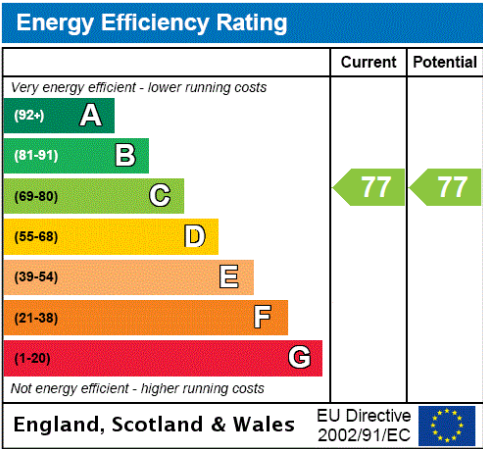


Minimum term 12 months

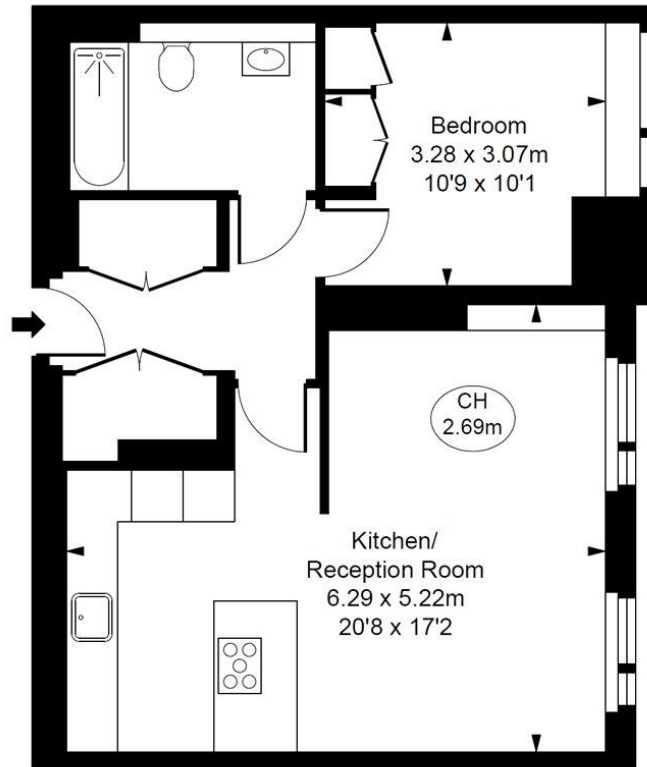
Council Tax Band G

ADDITIONAL INFORMATION

Offers	Available for a minimum term of 12 months longer terms will be considered
Viewing	Strictly by appointment
Local Authority	Westminster City Council - Council Tax Band G



Wigmore Street, W1U
 Approximate Gross Internal Area
 53.35 sq m / 574 sq ft
 (CH = Ceiling Heights)



First Floor

This plan is not to scale. It is for guidance and not for valuation purposes.
 All measurements and areas are approximate only, and have been prepared in accordance with the current edition of the RICS Code of Measuring Practice.
 © Fulham Performance



T: 020 7486 8866
 37 New Cavendish Street, London, W1G 9TL
 E: marylebone@carterjonas.co.uk



Exclusive UK affiliate of
CHRISTIE'S
 INTERNATIONAL REAL ESTATE

Classification L2 - Business Data

IMPORTANT INFORMATION

These particulars are for general information purposes only and do not represent an offer of contract or part of one. Carter Jonas has made every attempt to ensure that the particulars and other information provided are as accurate as possible and are not intended to amount to advice on which you should rely as being factually accurate. You should not assume that the property has all necessary planning, building regulations or other consents and Carter Jonas have not tested any services, facilities or equipment. Any measurements and distances given are approximate only. Where Carter Jonas have been provided with a floorplan by a third party, we can not guarantee that the floorplan has been measured in accordance with IPMS. Purchasers or prospective tenants must satisfy themselves of all of the aforementioned by independent inspection or otherwise. Although we make reasonable efforts to update our information, neither Carter Jonas nor anyone in its employment or acting on its behalf makes any representations warranties or guarantees, whether express or implied, in relation to the property, or that the content in these particulars is accurate, complete or up to date. Our images only represent part of the property as it appeared at the time they were taken and do not represent the furnishings included, these are confirmed in a separate inventory. If you require further information please contact us.

*Administration fees may apply depending on tenancy type. Please contact your local branch for this information.