



**BRYANSTON MEWS WEST, LONDON, W1H**  
£1,650 per week\*

**Carter Jonas**



## **BRYANSTON MEWS WEST, LONDON, W1H 2BW**

- Great Entertaining Space
- High Ceilings
- All Wood Floors
- 3 Bedroom Mews house
- 2 Bathrooms
- Utility room
- Unfurnished

### **THE PROPERTY**

This charming mews houses benefits from wood flooring throughout and a high spec kitchen and bathrooms.

It comprises a fantastic, open plan living space on the first floor, with three double bedrooms and two bathrooms (one ensuite) The garage has been converted into a flexible living space.

Available for long term rental on an unfurnished basis or furnished (at separate cost).

Holding deposit is 1 week's rent = £1,650 (at asking price)

Security deposit is 6 weeks rent = £9,900 (at asking price £1,650pw)

Minimum term 12 months

Council Tax Band G

Brunswick Mews is conveniently located close to the lush areas of Regent's Park and Hyde Park, as well as the leading stores and dining options in Marylebone and the West End. The neighbouring Marble Arch (0.3 miles), Bond Street (0.6 miles), and Baker Street (0.7 miles) underground stations, Marylebone (0.6 miles), and Paddington (0.9 miles) train stations, all offer excellent transit connections. As well as access to the West and Heathrow via the A40 and Elizabeth Line.

Residents of Westminster housing estates may also request a resident permit for zones A – G. For eligibility for resident parking permits, please refer to the <https://www.westminster.gov.uk/parking> website for further details.

**Stunning, newly remodelled three-bedroom mews house featuring an amazing open plan living space with vaulted ceilings and lots of natural light.**

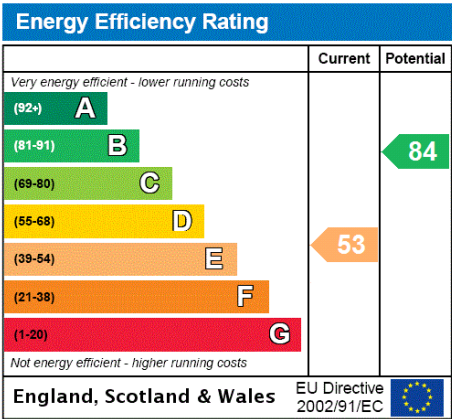




Superfast broadband and mobile coverage is present in this location. For the latest information on broadband and mobile coverage, please visit <https://checker.ofcom.org.uk/en-gb/broadband-coverage> for the most up-to-date details.

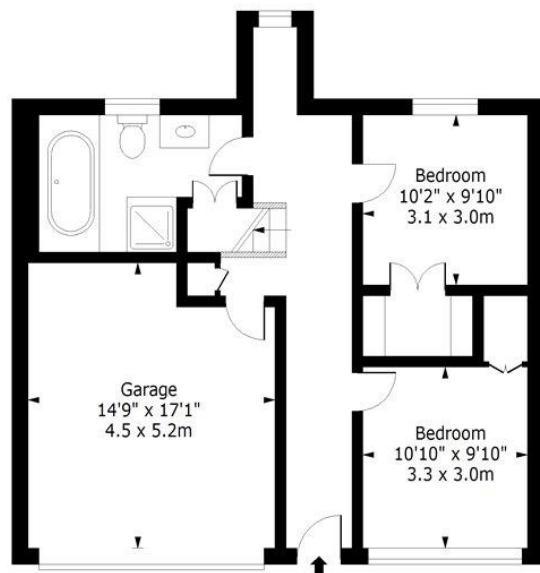
ADDITIONAL INFORMATION

Offers	Available for a minimum term of 12 months longer terms will be considered
Viewing	Strictly by appointment
Local Authority	Westminster City Council - Council Tax Band G



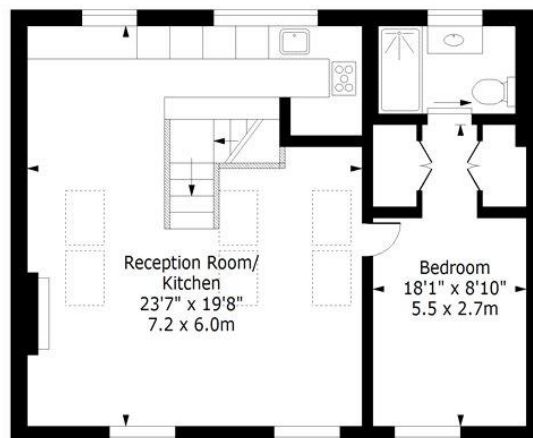
## Bryanston Mews West, W1H

Approx. Gross Internal Area 1503 Sq Ft - 139.63 Sq M (Including Garage)  
Approx. Gross Internal Area 1267 Sq Ft - 117.70 Sq M (Excluding Garage)



### Ground Floor

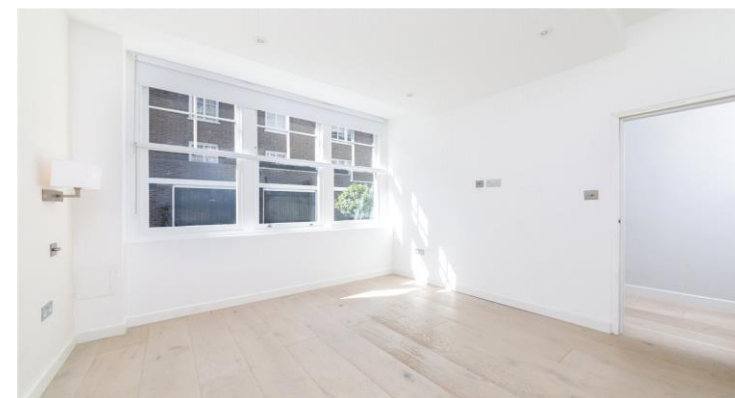
Floor Area 788 Sq Ft - 73.21 Sq M



### First Floor

Floor Area 715 Sq Ft - 66.42 Sq M

For Illustration Purposes Only - Not To Scale  
www.lpaplus.com



### IMPORTANT INFORMATION

These particulars are for general information purposes only and do not represent an offer or contract or part of one. Carter Jonas or anyone in their employment has made every attempt to ensure that the particulars and other information provided are as accurate as possible and they are not intended to amount to advice on which you should rely as being factually accurate. Full information which may be relevant to your decision regarding the property can be found on the property listing on [carterjonas.co.uk](http://carterjonas.co.uk) or a separately available material information sheet, and we would advise you to confirm the details of any material information prior to any offer being submitted. You should not assume that the property has all necessary planning, building regulations or other consents and Carter Jonas has not tested any services, facilities, or equipment. Any measurements and distances given are approximate only. Where Carter Jonas has been provided with a floorplan by a third party, we cannot guarantee that the floorplan has been measured in accordance with IPMS. Purchasers or prospective tenants must satisfy themselves of all of the aforementioned by independent inspection or otherwise. Our images only represent part of the property as it appeared at the time they were taken and do not represent the furnishings included; these are confirmed in a separate inventory. If you require further information, please contact us. \*Administration fees may apply depending on tenancy type. Please contact your local branch for this information.

T: 020 7486 8866

37 New Cavendish Street, London, W1G 9TL

E: [marylebone@carterjonas.co.uk](mailto:marylebone@carterjonas.co.uk)

A member of



Exclusive UK affiliate of

**CHRISTIE'S**  
INTERNATIONAL REAL ESTATE

Classification L2 - Business Data