



ST. MARY ABBOTS TERRACE, LONDON, W14
£1,710 per week*

Carter Jonas

FLAT 11, ABBOTS HOUSE, ST. MARY ABBOTS TERRACE, LONDON, W14 8NU

- 3 Bedrooms
- 3 Bathrooms
- 1 Reception
- Upper Floor with Lift
- Balcony
- Furnished

THE PROPERTY

Discover this stylish apartment featuring three bedrooms and three bathrooms. With an open-plan kitchen seamlessly integrated with a dining and reception area. Its modern interior design creates a bright and spacious atmosphere, complemented by a balcony for relaxation. Fully furnished for convenience, this apartment offers comfort and contemporary living at its finest.

Nestled in a prime location, residents can benefit from an array of amenities, renowned restaurants, trendy cafes, and excellent transport links with Kensington Olympia station and Holland Park right on your doorstep.

Holding deposit is 1 week's rent.

Security deposit is 6 week's rent.

Minimum term 12 months

Royal Borough of Kensington & Chelsea

Council Tax Band G

EPC rating: C

For the latest information on broadband and mobile coverage, please visit <https://checker.ofcom.org.uk/en-gb/broadband-coverage>.

For eligibility for resident parking permits, please refer to the <https://www.rbkc.gov.uk/parking-transport-and-streets/visitor-parking-and-pay-phone/guide-parking> website for further details.

This stunning three-bedroom, three-bathroom flat is located on the fifth floor of Abbots House, beautifully nestled in the sought-after area of St Mary Abbots Terrace.



ADDITIONAL INFORMATION

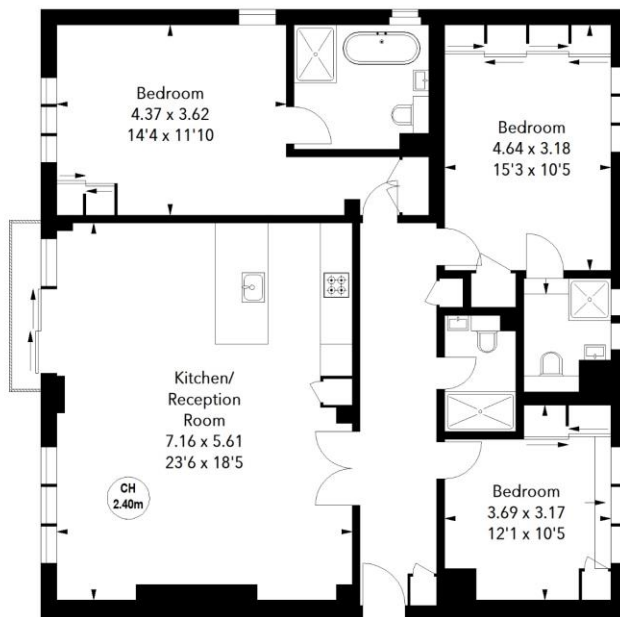
Offers	Available for a minimum term of 12 months longer terms will be considered
Viewing	Strictly by appointment
Local Authority	Kensington & Chelsea Borough Council - Council Tax Band G



Abbots House, W14

Key :
CH - Ceiling Height

Approximate Area = 114.55 sq m / 1233 sq ft



Fifth Floor

The floor plan is not to scale and measurements and areas shown are approximate and therefore should be used for illustrative purposes only. The plan has been prepared in accordance with the RICS code of Measuring Practice and whilst we have confidence in the information produced, it must not be relied on. If there is any aspect of particular importance, you should carry out or commission your own inspection of the property.



Energy Efficiency Rating		
	Current	Potential
Very energy efficient - lower running costs		
(92+) A		
(81-91) B		
(69-80) C		
(55-68) D		
(39-54) E		
(21-38) F		
(1-20) G		
Not energy efficient - higher running costs		
	70	82
England, Scotland & Wales	EU Directive 2002/91/EC	

T: 020 7584 7020

25-27 Harrington Road, London, SW7 3EU

E: chelsea@carterjonas.co.uk

A member of



Exclusive UK affiliate of

CHRISTIE'S
INTERNATIONAL REAL ESTATE

Classification L2 - Business Data

IMPORTANT INFORMATION

These particulars are for general information purposes only and do not represent an offer or contract or part of one. Carter Jonas or anyone in their employment has made every attempt to ensure that the particulars and other information provided are as accurate as possible and they are not intended to amount to advice on which you should rely as being factually accurate. Full information which may be relevant to your decision regarding the property can be found on the property listing on carterjonas.co.uk or a separately available material information sheet, and we would advise you to confirm the details of any material information prior to any offer being submitted. You should not assume that the property has all necessary planning, building regulations or other consents and Carter Jonas has not tested any services, facilities, or equipment. Any measurements and distances given are approximate only. Where Carter Jonas has been provided with a floorplan by a third party, we cannot guarantee that the floorplan has been measured in accordance with IPMS. Purchasers or prospective tenants must satisfy themselves of all of the aforementioned by independent inspection or otherwise. Our images only represent part of the property as it appeared at the time they were taken and do not represent the furnishings included; these are confirmed in a separate inventory. If you require further information, please contact us. *Administration fees may apply depending on tenancy type. Please contact your local branch for this information.