



CASTLEREAGH STREET, MARYLEBONE, W1H
£1,175 per week*

Carter Jonas

FLAT 9, CASTLEREAGH STREET, MARYLEBONE, LONDON, W1H 5BU

- 2 Bedrooms
- 2 Bathrooms (1 en-suite)
- 1 Reception Room
- High Spec Kitchen
- 2 Balconies
- Third Floor (with lift)
- Unfurnished (or furnished at separate cost)

THE PROPERTY

Measuring approximately 1268 sq ft (117sqm), this bright apartment comprises a huge reception room with wood floors, modern high spec kitchen, two balconies, main bedroom with en-suite bathroom, a second bedroom and a family shower room.

The property is professionally managed by The Portman Estate.

Available for long term rental on an unfurnished basis, or furnished (at separate cost)

Holding deposit is 1 week's rent = £1,175 (at asking price)

Security deposit is 6 week's rent = £7,050 (at asking price)

Minimum term -12 months

For eligibility for resident parking permits, please refer to the <https://www.westminster.gov.uk/parking> website for further details.

For the latest information on broadband and mobile coverage, please visit <https://checker.ofcom.org.uk/en-gb/broadband-coverage> for the most up-to-date details.

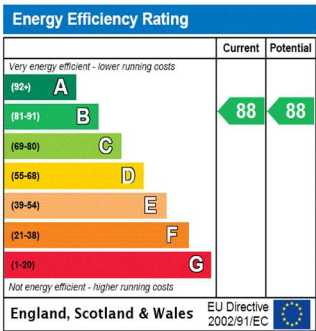
LOCATION

The Portman Estate's 110 acres of land within Marylebone, London W1, has a rich heritage dating back to the 16th century and is the setting for continual investment in premium residential properties, shops and independent businesses. The Portman Estate includes key places of architectural and historical interest along with a vibrant blend of shops, including Portman Village, restaurants, wine-bars, hotels and garden squares - a perfect mix of leisure opportunities for residents in the heart of London's West End.

Rare opportunity to rent a third floor (with lift) apartment, renovated to a wonderful standard, located in this impressive new gated development in Marylebone.

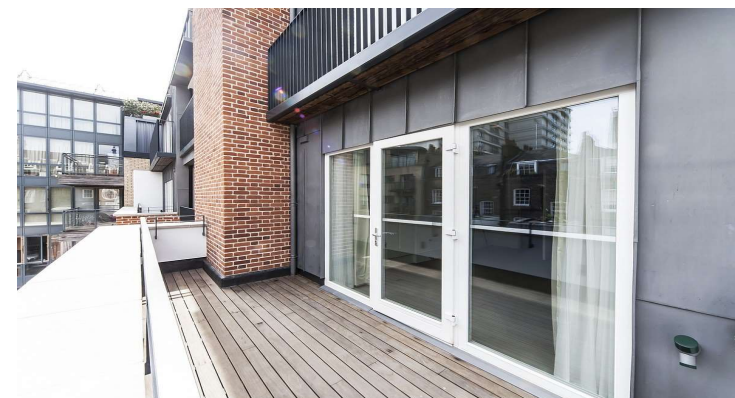
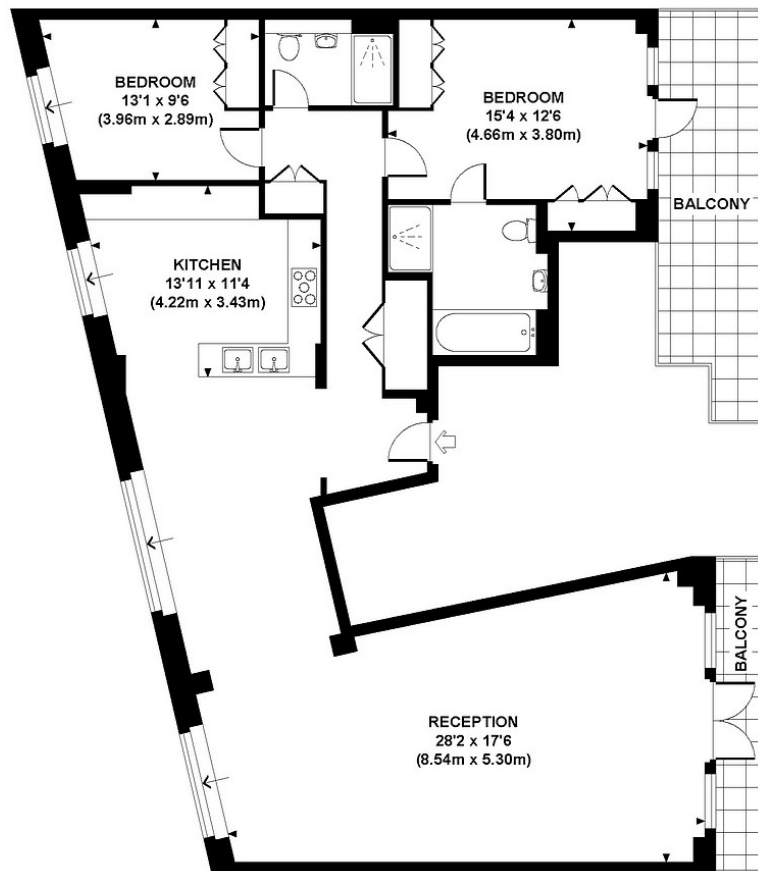


ADDITIONAL INFORMATION	
Offers	Available for a minimum term of 12 months longer terms will be considered
Viewing	Strictly by appointment
Local Authority	Westminster City Council - Council Tax Band G



CASTLEREIGH STREET, W1

Approx. gross internal area
1268 Sq Ft. / 117.8 Sq M.
Representation of current layout.
Not to scale.



T: 020 7486 8866

37 New Cavendish Street, London, W1G 9TL

E: marylebone@carterjonas.co.uk

A member of



Exclusive UK affiliate of

CHRISTIE'S
INTERNATIONAL REAL ESTATE

Classification L2 - Business Data

IMPORTANT INFORMATION

These particulars are for general information purposes only and do not represent an offer or contract or part of one. Carter Jonas or anyone in their employment has made every attempt to ensure that the particulars and other information provided are as accurate as possible and they are not intended to amount to advice on which you should rely as being factually accurate. Full information which may be relevant to your decision regarding the property can be found on the property listing on carterjonas.co.uk or a separately available material information sheet, and we would advise you to confirm the details of any material information prior to any offer being submitted. You should not assume that the property has all necessary planning, building regulations or other consents and Carter Jonas has not tested any services, facilities, or equipment. Any measurements and distances given are approximate only. Where Carter Jonas has been provided with a floorplan by a third party, we cannot guarantee that the floorplan has been measured in accordance with IPMS. Purchasers or prospective tenants must satisfy themselves of all of the aforementioned by independent inspection or otherwise. Our images only represent part of the property as it appeared at the time they were taken and do not represent the furnishings included; these are confirmed in a separate inventory. If you require further information, please contact us. *Administration fees may apply depending on tenancy type. Please contact your local branch for this information.