



UPPER BERKELEY STREET, MARYLEBONE, W1H
£725 per week*

Carter Jonas

UPPER BERKELEY STREET, MARYLEBONE, LONDON, W1H 7PF

- 1 Bedroom
- 1 Shower Room
- Open Plan Reception
- All Wood Floors
- High Ceilings
- Unfurnished (or furnished at separate cost)

LOCATION

The Portman Estate's 110 acres of land within Marylebone, London W1, has a rich heritage dating back to the 16th century and is the setting for continual investment in premium residential properties, shops, and independent businesses. The Portman Estate includes key places of architectural and historical interest along with a vibrant blend of shops, including Portman Village, restaurants, wine-bars, hotels, and garden squares - a perfect mix of leisure opportunities for residents in the heart of London's West End.

THE PROPERTY

From the moment you step inside, you're greeted by beautiful wood floors that lend a warm and inviting feel to the entire space.

With beautiful wood floors throughout, you'll feel the warmth and comfort of this home as soon as you enter. The high-spec kitchen and bathroom are the real showstoppers here, boasting top-of-the-line appliances and finishes that add both style and functionality to the space.

The open plan kitchen/reception is perfect for hosting friends and family, with plenty of room for lounging, dining, and entertaining. And when it's time to retire for the evening, you'll love the tranquil retreat of the cosy bedroom and modern shower room.

Located on the first floor with high ceilings, this apartment is a true gem that's not to be missed.

Available for long term rental on an unfurnished basis unfurnished, or furnished for separate cost.

The property is professionally managed The Portman Estate.

This gorgeous one bedroom apartment that has been recently refurbished to an exceptional standard. Nestled in the heart of Marylebone, one of London's most sought-after neighbourhoods, this gem boasts all wood floors and soaring high ceilings.



Holding deposit is 1 week's rent = £725 (at asking price).

Security deposit is 5 weeks rent = £3,625 (at asking price of £725pw).

Minimum term 12 months

Council Tax Band E

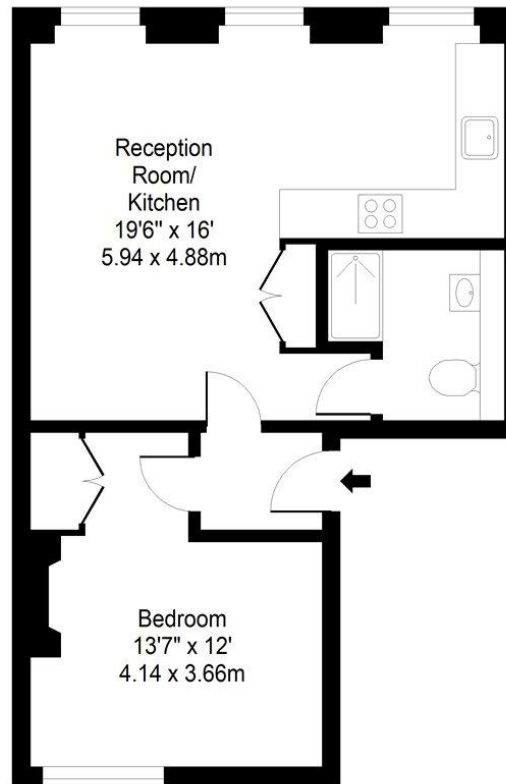
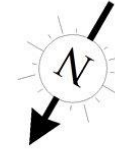
The Portman Estate's 110 acres of land within Marylebone, London W1, has a rich heritage dating back to the 16th century and is the setting for continual investment in premium residential properties, shops and independent businesses. The Portman Estate includes key places of architectural and historical interest along with a vibrant blend of shops, including Portman Village, restaurants, wine-bars, hotels and garden squares - a perfect mix of leisure opportunities for residents in the heart of London's West End.

ADDITIONAL INFORMATION

Offers	Available for a minimum term of 12 months longer terms will be considered
Viewing	Strictly by appointment
Local Authority	Westminster City Council - Council Tax Band E



UPPER BERKELEY STREET



First Floor

Approx. Gross Internal Area 486 Sq Ft - 45.15 Sq M
For Illustrative Purposes Only - Not To Scale

Energy Efficiency Rating		
	Current	Potential
Very energy efficient - lower running costs		
(92+) A		
(81-91) B		
(69-80) C	75	81
(55-68) D		
(39-54) E		
(21-38) F		
(1-20) G		
Not energy efficient - higher running costs		
England, Scotland & Wales	EU Directive 2002/91/EC	

T: 020 7486 8866

37 New Cavendish Street, London, W1G 9TL
E: marylebone@carterjonas.co.uk

A member of



Exclusive UK affiliate of

CHRISTIE'S
INTERNATIONAL REAL ESTATE

IMPORTANT INFORMATION

These particulars are for general information purposes only and do not represent an offer of contract or part of one. Carter Jonas has made every attempt to ensure that the particulars and other information provided are as accurate as possible and are not intended to amount to advice on which you should rely as being factually accurate. You should not assume that the property has all necessary planning, building regulations or other consents and Carter Jonas have not tested any services, facilities or equipment. Any measurements and distances given are approximate only. Where Carter Jonas have been provided with a floorplan by a third party, we can not guarantee that the floorplan has been measured in accordance with IPMS. Purchasers or prospective tenants must satisfy themselves of all of the aforementioned by independent inspection or otherwise. Although we make reasonable efforts to update our information, neither Carter Jonas nor anyone in its employment or acting on its behalf makes any representations warranties or guarantees, whether express or implied, in relation to the property, or that the content in these particulars is accurate, complete or up to date. Our images only represent part of the property as it appeared at the time they were taken and do not represent the furnishings included, these are confirmed in a separate inventory. If you require further information please contact us.

*Administration fees may apply depending on tenancy type. Please contact your local branch for this information.