



**BRYANSTON COURT, GEORGE STREET, W1H**  
£1,925 per week\*

**Carter Jonas**



# FLAT 115, BRYANSTON COURT, GEORGE STREET, LONDON, W1H 7HE

- 3 Bedrooms
- 2 Bathrooms
- 1 Reception room
- 1,385 Square Feet
- Furnished
- Porter
- Lift

## THE PROPERTY

The property benefits from plenty of natural light throughout and has been finished to a modern standard throughout.

It comprises of an open plan kitchen, two double bedrooms and one single bedroom all with integrated wardrobes, two modern bathrooms, a utility room and a dining room.

This popular purpose-built block with 24 Hour uniformed portage, lifts, CCTV, and small communal gym.

Bryanston Court was built in the 1930's and is located at the corner with Seymour Place and George Street within moments' walk of Portman and Connaught Villages with Oxford and Marylebone High Street both being within close proximity.

Holding deposit is 1 week's rent = £1,925 (at asking price)

Security deposit is 6 week's rent = £11,550 (at asking price £1,925pw)

Minimum Term 12 months

Council Tax Band G

For the latest information on broadband and mobile coverage, please visit [/checker.ofcom](https://checker.ofcom.gov.uk/) for the most up-to-date details.

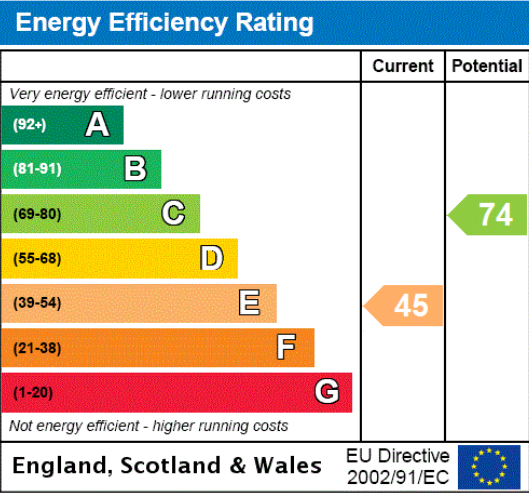
This elegant apartment is situated in a popular Mansion block on George Street, featuring an open-plan kitchen and reception room, three bedrooms, and two bathrooms.





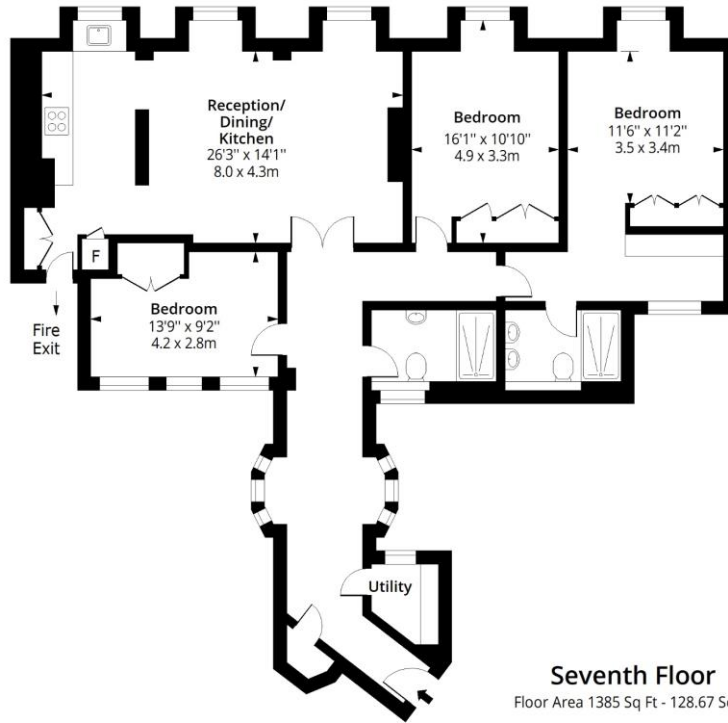
ADDITIONAL INFORMATION

Offers	Available for a minimum term of 12 months longer terms will be considered
Viewing	Strictly by appointment
Local Authority	Westminster City Council - Council Tax Band G



# Bryanston Court, W1H

Approx. Gross Internal Area 1385 Sq Ft - 128.67 Sq M



## Seventh Floor

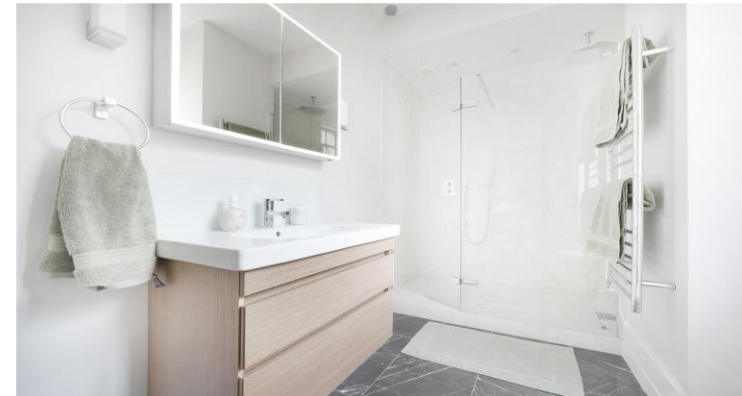
Floor Area 1385 Sq Ft - 128.67 Sq M



Measured according to RICS IPMS2. Floor plan is for illustrative purposes only and is not to scale. Every attempt has been made to ensure the accuracy of the floor plan shown, however all measurements, fixtures, fittings and data shown are an approximate interpretation for illustrative purposes only. 1 sq m = 10.76 sq feet.

lpaplus.com

Date: 6/10/2024



T: 020 7486 8866

37 New Cavendish Street, London, W1G 9TL

E: marylebone@carterjonas.co.uk

A member of



Exclusive UK affiliate of

**CHRISTIE'S**  
INTERNATIONAL REAL ESTATE

Classification L2 - Business Data

## IMPORTANT INFORMATION

These particulars are for general information purposes only and do not represent an offer or contract or part of one. Carter Jonas or anyone in their employment has made every attempt to ensure that the particulars and other information provided are as accurate as possible and they are not intended to amount to advice on which you should rely as being factually accurate. Full information which may be relevant to your decision regarding the property can be found on the property listing on carterjonas.co.uk or a separately available material information sheet, and we would advise you to confirm the details of any material information prior to any offer being submitted. You should not assume that the property has all necessary planning, building regulations or other consents and Carter Jonas has not tested any services, facilities, or equipment. Any measurements and distances given are approximate only. Where Carter Jonas has been provided with a floorplan by a third party, we cannot guarantee that the floorplan has been measured in accordance with IPMS. Purchasers or prospective tenants must satisfy themselves of all of the aforementioned by independent inspection or otherwise. Our images only represent part of the property as it appeared at the time they were taken and do not represent the furnishings included, these are confirmed in a separate inventory. If you require further information, please contact us. \*Administration fees may apply depending on tenancy type. Please contact your local branch for this information.